



Agincare

Live-in Care

*Quality care
since 1986*

INDEPENDENT LIVING FOR ALL

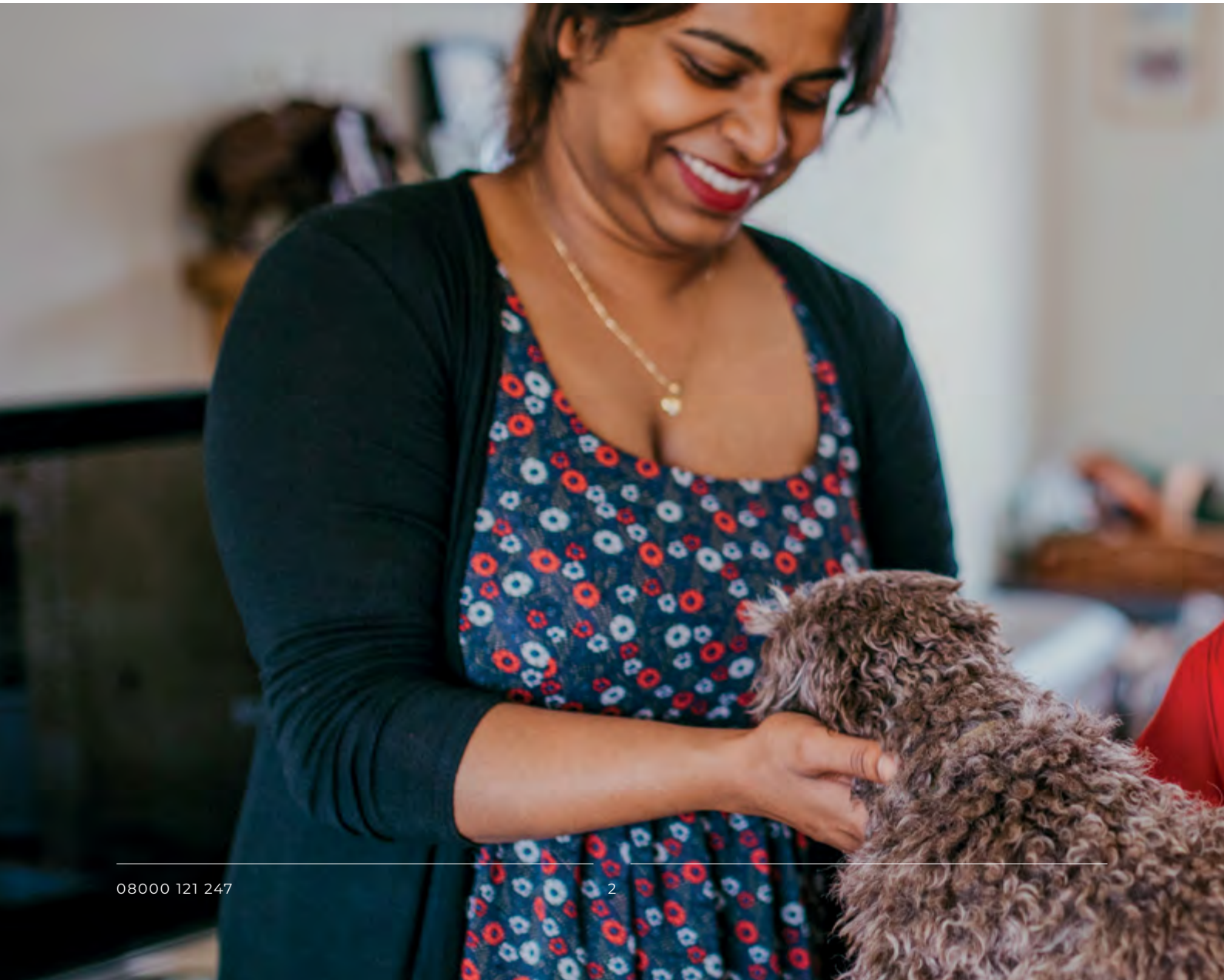
Supporting older people

Round-the-clock peace of mind

Recent research shows that nearly three-quarters of us want to remain in our own homes as we get older.

Live-in care in the comfort and familiarity of your home gives you control over your care, bringing you one-to-one support with consistent continuity.

For many of our older clients, our live-in service has prevented a hospital or care home admission, while improving health and wellbeing at home.



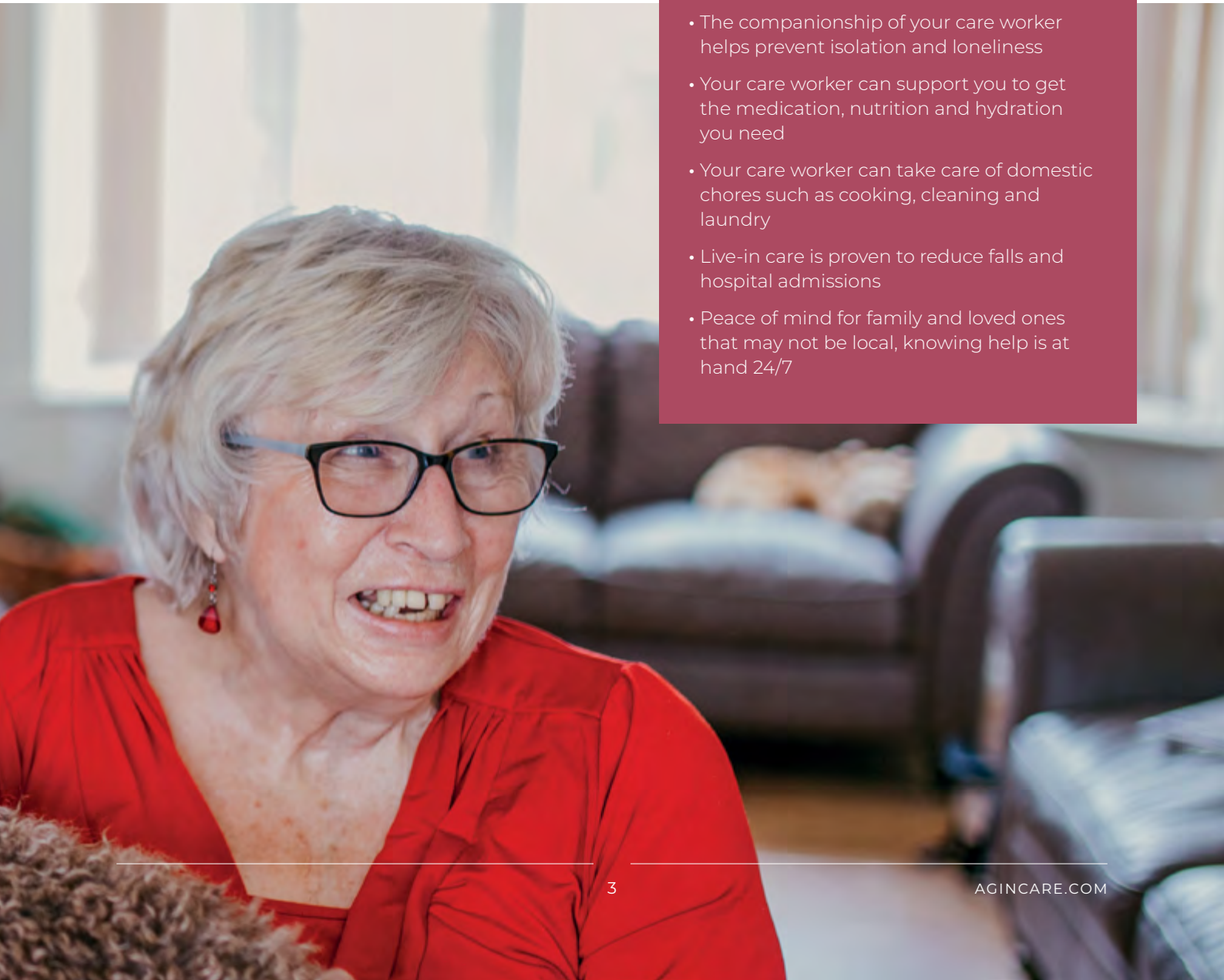
Our 24-hour one-to-one support in your home ranges from companionship care, respite and short term care, reablement and a waking night service, through to complex care for health issues such as:

- Dementia care
- Palliative care
- Multiple sclerosis (MS)
- Parkinson's
- Cerebral palsy

We work together with families and any healthcare professionals involved, creating a service that will offer peace of mind and reassurance. We completely understand where heartfelt care is needed and when encouraging support is welcome.

What are the advantages of live-in care?

- You get one-to-one, personalised support, 24 hours a day, to meet all your individual needs
- You can stay in your own home, alongside any family or pets
- You can keep your independence and continue to be part of your local community, with your social life and timetable
- The companionship of your care worker helps prevent isolation and loneliness
- Your care worker can support you to get the medication, nutrition and hydration you need
- Your care worker can take care of domestic chores such as cooking, cleaning and laundry
- Live-in care is proven to reduce falls and hospital admissions
- Peace of mind for family and loved ones that may not be local, knowing help is at hand 24/7



Empowering younger adults

*Choice and control over
how you live your life*

We provide bespoke live-in care for young adults with physical disabilities, learning disabilities, chronic or terminal illness and people managing unexpected care needs, such as acquired brain injuries.

We connect you with the best support worker for your life. Together we create a support plan that fits around you. Whether you're making the transition from school to college, or from university to the workplace, our flexible full-time live-in service is a realistic and affordable alternative to other forms of support.

- Round-the-clock care and support without the round-the-clock cost
- Your own support worker/s supporting you in your chosen lifestyle
- You don't have the responsibilities (and risks) of being an employer - we fully manage and cover our live-in support service, including your support worker's holidays
- Support workers are carefully matched to your needs and preferences
- Our support workers are DBS (police) checked
- We fully train all our support workers
- Our services are available on a long-term or short-term (respite) basis





Experts in complex care

Our complex live-in care service is for people who need support with significant healthcare issues, but who want to live as independently as possible at home.

With support from our carefully-matched qualified care worker you can stay in the comfort, familiarity and security of your own home. Our experienced live-in care staff are trained to support you with complex care and medical devices or equipment, under the guidance and direction of your health professionals.

Our complex live-in care staff support people living with a range of conditions such as:

- Acquired brain injuries
- Multiple sclerosis
- Spinal cord injuries
- Parkinson's
- Huntingdon's Disease
- Cancer

Reablement

If you're worried about recovering at home after illness, a hospital stay or a fall, our dedicated live-in reablement care can help you get your strength and confidence back.

Our care staff receive high levels of training. As well as giving you the care you need, once you're able, they'll give you the intensive support and encouragement you need to regain your independence and skills.

This includes helping you to manage doing practical things on your own. This could be getting dressed, preparing meals, and going up and down stairs so you can be comfortable, confident and capable to live independently.

Options and choices

We provide quality support and care to people of all ages with a wide range of dependency and needs.

You can choose from any of the following support options or create your own:

- Domestic duties, cooking, shopping
- Gardening and household duties
- Helping with pet care
- Support to maintain important relationships with families and friends
- Liaising with healthcare professionals
- Socialising, pursuing hobbies and interests
- Being a part of the local community
- Managing continence, medication and mobility
- Supporting you at college, university or work
- Respite care: staying with and supporting you while your regular carer takes a well-deserved break.

Nursing tasks are not ordinarily provided by a live-in care worker, though we can arrange it. Many people we support have high levels of dependency, so we work closely with our colleagues, clinicians and health and social care professionals.

A personal approach to arranging your live-in care

We match a care worker to you through a comprehensive assessment and matching process done by people, not a computer.

We understand that someone coming to live in your house can be a big step. That's why we take so much care matching client and live-in care worker.

We have a rigorous selection process, rejecting many more candidates than we recruit. We look for hard-working individuals with a special blend of compassion, common sense, reliability and a great sense of humour.

Our 700 trained and qualified live-in care staff all have their own mix of experience, qualifications, background and interests - there will be someone to suit you and your situation.

We'll come to your home to discuss a tailored package with you, so we can fully understand your needs, home situation, likes and dislikes. Then we go away to consider which of our care staff would be the best match.

"Thanks Agincare for helping to organise live-in care for my mum so promptly. The professional and thoughtful Agincare approach throughout the process was reassuring and appreciated."

A recent testimonial

The next steps

When you choose Agincare we'll guide you through the following steps:

Step one - making an initial enquiry

One of our team of friendly customer relations advisors will give you a guide price, offer funding advice and describe in detail the potential of our service. There is no obligation, it's just helpful advice.

The team has a wealth of experience in talking to people in a range of different situations. They are used to dealing sensitively with clients who have never needed care before, or who are in distress or in crisis, as well as people simply looking forward to a new life with a live-in care worker.

Step two - having a no-obligation care assessment

If you decide you want to find out more, the next step is to book a **no-obligation free assessment**.

One of our team of care assessors will visit you at home and complete a comprehensive assessment. This will allow us to get to know you, your life and home and understand exactly what care and support you require.

Our care assessors are professionally-qualified experts in the field, helpful and friendly. We can then provide you with an exact price for your tailored care service. You are under **no obligation** to take it further.

"The Care worker from Agincare is well qualified; in fact outstanding. Laura is very thorough, patient and very caring. She treats my wife, who is becoming so much harder to care for, with gentleness and consideration at all times."

Husband of Parkinson's sufferer

Step three - arranging a start date and a care worker

If you decide that you want us to provide you with a service, that's great and welcome to the Agincare family!

The next step is to finalise the start date. We'll get on with recommending a care worker or support worker - someone to suit you and your situation. We'll bring you two or three profiles to consider.

Step four - starting a new chapter

The care assessor who visited you at home will have created a comprehensive care and support plan to discuss and agree with you.

They will also be there on the first day of your service to support you and the care worker to get to know each other and to help make sure that everything is in place to start your new chapter.



Why Agincare?

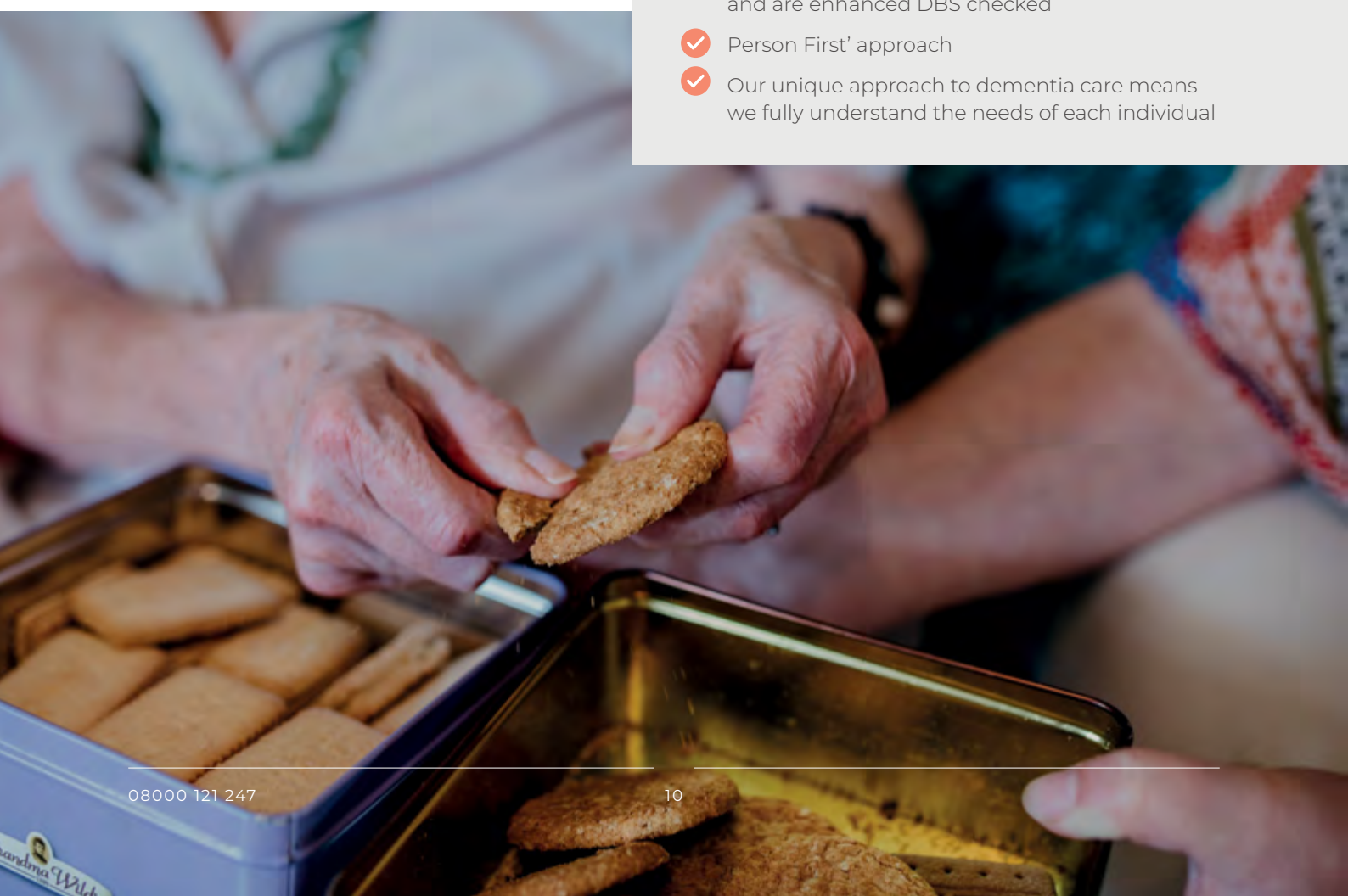
Our live-in care service is special because we fully manage it.

Regulated by



We provide a wide range of care services to suit your personal needs, including live-in care, home care and residential care homes.

- ✓ Family-owned
- ✓ Agincare are a family-owned business that have been providing reliable and professional care since 1986
- ✓ National coverage
- ✓ We are one of the largest care groups in England with over 3500 staff
- ✓ High quality care
- ✓ 90% of our customers rate us 'Excellent' or 'Great'
- ✓ Fully regulated
- ✓ All our care services are fully regulated by the Care Quality Commission for your total reassurance
- ✓ Fully trained staff
- ✓ Our care staff have nationally recognised qualifications and are enhanced DBS checked
- ✓ 'Person First' approach
- ✓ Our unique approach to dementia care means we fully understand the needs of each individual



On-going support from our professional team

Our regional coordinators are in the community every day visiting clients and supporting staff.

Once your service begins, they will come to see you at home to introduce themselves. They'll then visit you on a regular basis and you'll have a weekly call from our office team to make sure that everything's OK.

You'll get to know your regional coordinator and office-based coordinator well - they'll be your regular points of contact for advice and support, with you every step of the way. You also have the reassurance that we operate a 24/7 emergency on-call service for both clients and staff.

Get in touch

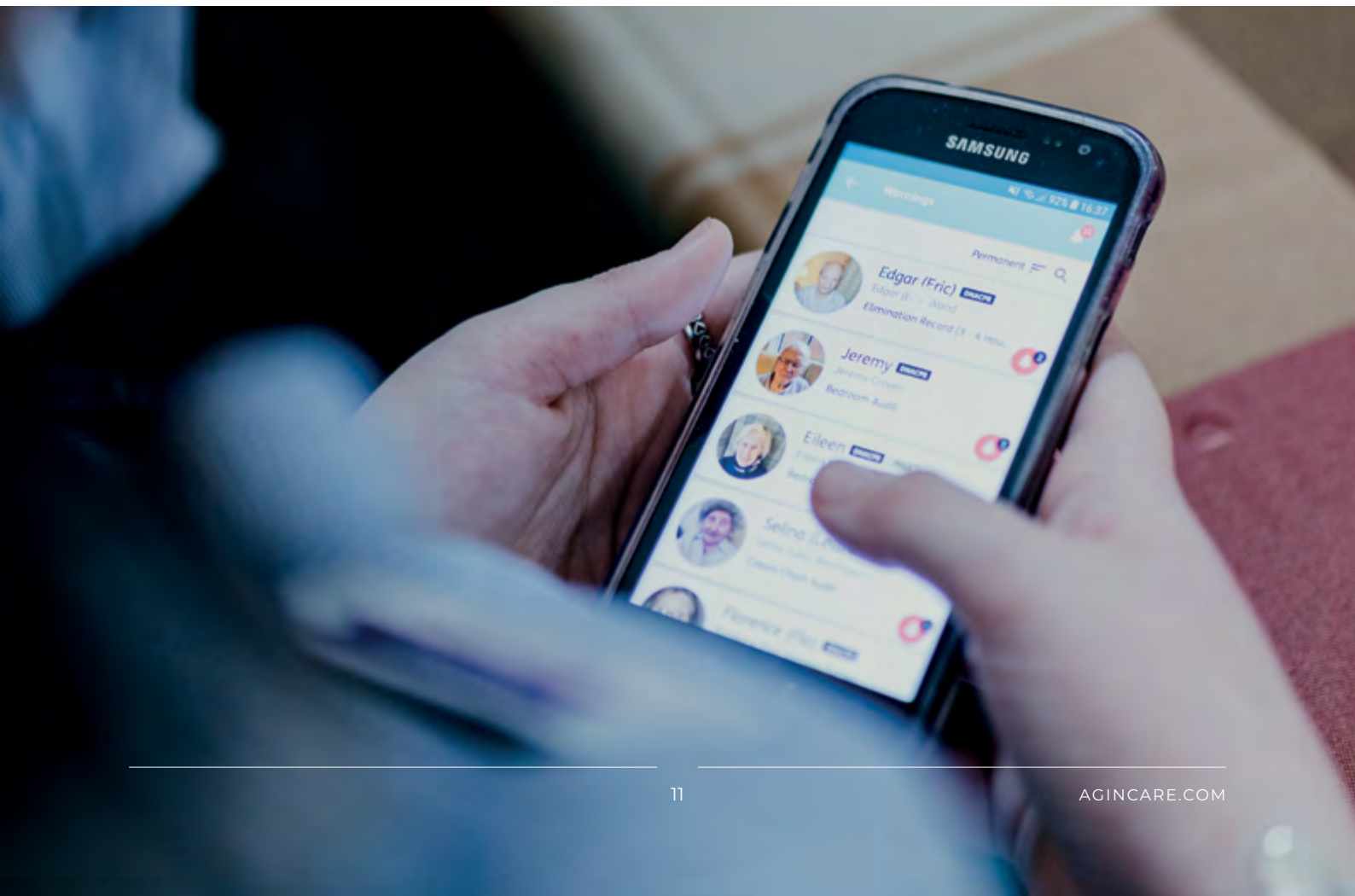
Call us **FREE** today
08000 121 247

Email us at
BROKERAGE@AGINCARE.COM

Want to learn more?

Visit our website for more information about live-in care and to view our exclusive offers.

AGINCARE.COM



Contact us

Call us today

08000 121 247 | [AGINCARE.COM](https://www.agincare.com)

Agincare Live-In Care (South West) Ltd:

Agincare House, Admiralty Buildings,
Castletown, Portland, Dorset, DT5 1BB

Agincare Live-in Care (South East) Ltd:

Unit 18, Boundary Business Centre,
Boundary Way, Woking, Surrey, GU21 5DH

Agincare Live-in Care (Central) Ltd:

1st Floor Goeland House, 178 St Albans Road,
Arnold, Nottingham, NG5 6GP

Agincare Live-In Management Services Ltd:

Reg Office: Agincare House, Admiralty
Buildings, Castletown, Portland,
Dorset, DT5 1BB

Agincare

Caring in your community

Agincare Group Ltd. Registered in England No. 6182736.

Registered Office: Agincare House, Admiralty Buildings,
Castletown, Portland, Dorset, DT5 1BB. VAT No: 905129248

