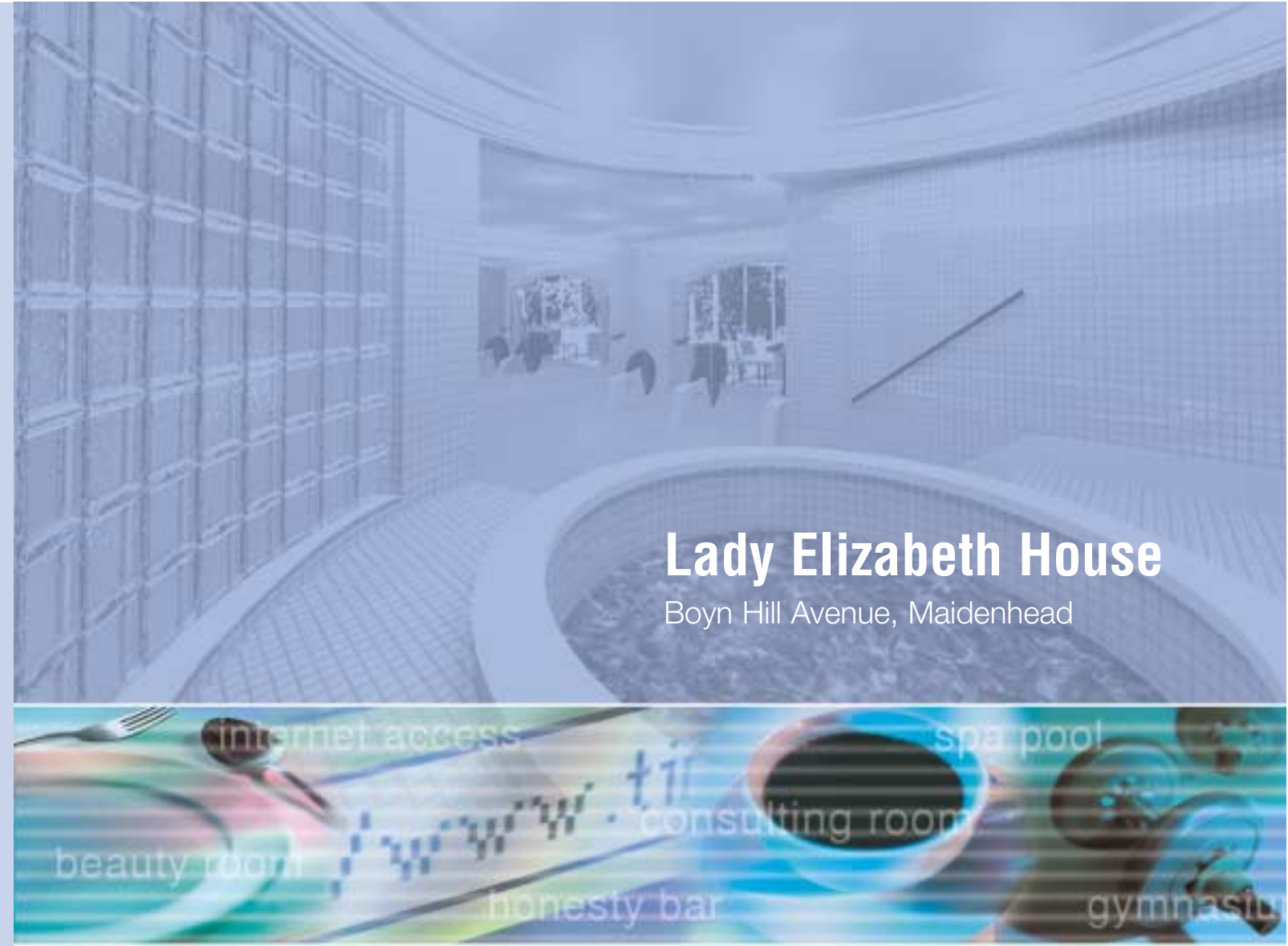


Lady Elizabeth House, Boyn Hill Avenue, Maidenhead, Berkshire SL6 4ES



Lady Elizabeth House

Boyn Hill Avenue, Maidenhead

The development is within easy reach of Maidenhead town centre. Its location is ideal for transport links. Maidenhead Station is just over one mile away and offers fast access to London (Paddington) in just 30 minutes. Road links are excellent with junction 8/9 of the M4 around 2 miles away.

All illustrations and photographs in this brochure are designed to give a general impression of the interior and exterior of Lady Elizabeth House. All dimensions are approximate and floor plans are for guidance only.

A revolutionary new concept for sheltered housing

"People are living longer, they want to retain their independence for as long as they can, and they have expectations of a higher quality of life than that enjoyed by previous generations.

Lady Elizabeth House has been designed to meet these needs and expectations and will set a new standard for sheltered housing in the UK."

John Petitt, Group Chief Executive, Housing Solutions


 Bridgewater Housing is part of the Housing Solutions Group
 Crown House, Crown Square,
 Waldeck Road, Maidenhead,
 Berkshire SL6 8BY
 Tel: 01628 543100
 Fax: 01628 543199
 www.housingsolutions.co.uk


 housing solutions group



Lady Elizabeth House offers a revolutionary new concept in sheltered housing.



Our sheltered housing scheme is one of the first in the UK designed with facilities to help tenants stay fitter and healthier for longer.

This includes a spa pool for hydrotherapy and relaxation, a gym for fitness and an on-site consulting room for visiting health professionals.

New technology has been used to help promote independent living for tenants of Lady Elizabeth House. Every apartment is wired for intelligent monitoring systems. These are designed to watch over tenants who are frail, through illness, disability or old age, and call for help if it is needed. The intelligent monitoring systems will be customised in each apartment to suit the individual needs of tenants.

Enhanced Care will be available to every tenant. This service is for people who can no longer manage alone in their own homes and who need high levels of personal care to continue to live an independent lifestyle. It is a real alternative to entering residential care as it offers people the opportunity to live independently in a self contained apartment with the benefits of a tailored package of care and support to meet their individual needs. Experienced staff will be on duty 24 hours a day to provide this service.

If you are becoming increasingly frail, through illness, disability or age, but wish to continue to live independently in your own home, sheltered housing may be the answer for you. It is ideal if you need the reassurance of trained staff on hand to offer help and support, and yet you still want to live in a home of your own with your own front door.

Spend a few days living at Lady Elizabeth House to see if life there would suit you before you make a final decision to move.

For more details call our Customer Contact Centre on 01628 543104 or email: contact@mdha.co.uk

Eligibility

To be eligible for an apartment at Lady Elizabeth House people have to be assessed in need of home care. There are no age restrictions.

Interiors

Lady Elizabeth House has 21 one bedroom and 8 two bedroom fully self-contained apartments. The spacious apartments all have underfloor heating.

- Bedrooms, lounges and hallways are fully carpeted.
- Kitchens have been professionally designed and include a fitted hob, high level cooker, and fridge freezer.
- Bathrooms are fitted with classic white suites with chrome-plated taps and the majority have a level access shower.
- All apartments have a video entry system.
- Guest suites with en suite facilities so that tenants can have relatives and friends to stay in comfort.

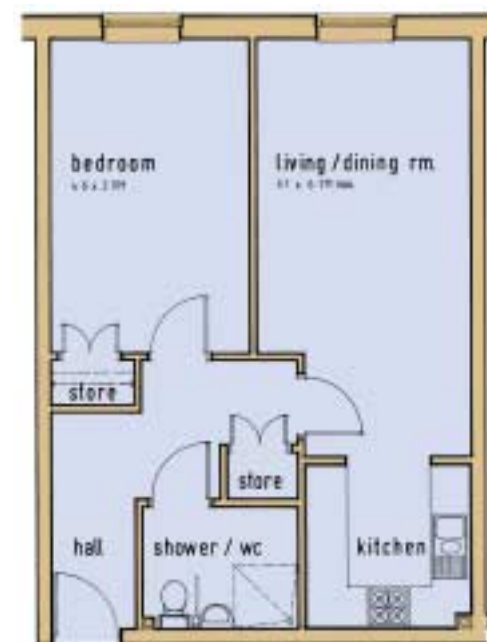
Communal Facilities

There is a wide range of facilities at Lady Elizabeth House available to all tenants who wish to use them. They include:

- Spa pool
- Gym
- Lounge with an honesty bar and computer with Internet facilities
- Hairdressing and beauty room
- Laundry
- Dining room where lunch will be served daily.



Typical One Bedroom Flat



Typical Two Bedroom Flat

