

LABURNUM GROVE STATEMENT OF PURPOSE



Tenants and Carers enjoy a grand day out at Great Yarmouth

LABURNUM GROVE HOUSING WITH CARE SCHEME
THETFORD IP24 1HS TELEPHONE: 01842 753185

Registered Provider:
Harold Bodmer
Norfolk County Council, Social Services Department

Registered Manager:
Pearl Mumford MSc BA Dip Ed
September 2008

I Shall Wear Purple

Jenny Joseph

Warning

When I am an old woman I shall wear purple
With a red hat that doesn't go and doesn't suit me
And I shall spend my pension on brandy and summer gloves
And satin sandals and say we have no money for butter.

I shall sit down on the pavement when I am tired
And gobble up samples in shops and press alarm bells
And run my stick along public railings
And make up for the sobriety of my youth
I shall go out in slippers in the rain
And pick flowers in other peoples gardens
And learn to spit

You can wear terrible shirts and grow more fat
And eat three pounds of sausages in one go
Or only bread and pickle for a week
And hoard pens and pencils and beer mats and things in boxes

But now we must have clothes that keep us dry
And pay our rent and not swear in the street
And set a good example to the children
We must have friends to dinner and read the papers

But maybe I ought to practice a little now?
So people who know me are not too shocked and surprised
When suddenly I am old and start to wear purple

THE DINING ROOM AND STREETS



The Grove Restaurant is light and airy and offers tenants the opportunity to enjoy their meals in company with their neighbours. Alternatively, if they prefer to dine within their own flats, the staff will be happy to deliver meals to each tenant.



The corridors within the complex are laid out as streets. Although totally enclosed, the streets have the feel of a local village where all the neighbours know each other. The atmosphere is friendly and the spaces open.

INTRODUCTION

Laburnum Grove Housing with Care Scheme is a *joint venture* between **Peddars Way Housing Association** and the **Social Services Department of Norfolk County Council**. It provides *modern, safe and affordable* accommodation for older people who may need assistance due to frailty or ill-health. Here they can live independently, confident in the knowledge that care is on hand when required. The complex consists of 25 one-person flats, 5 two-person flats and are served by our fully trained staff 24-hours per day, 365 days a year. A guest room is available at a small charge to provide overnight accommodation for visiting relatives and friends.

The Day Centre, which is attached to the Scheme is open weekdays and provides stimulating and enjoyable activities for older people in the Thetford area. Trained and experienced staff offer a warm and friendly environment for all our clients. We have a bus that has been specially adapted for people with mobility problems and wheelchair users. The bus collects clients from their homes in the morning and takes them back after the day.

There is also a fully equipped kitchen with a range of catering services. Tenants have the choice of taking hot meals in the restaurant or in the privacy of their own flats. In *partnership* with **Age Concern**, the *kitchen and dining room* also offer a lunch menu for older people in the Thetford area each Friday, Saturday and Sunday. In addition, the kitchen also provides a meals-on-wheels service to local residents.

The registered manager is available during office hours and, if necessary, will be available outside normal hours by arrangement.

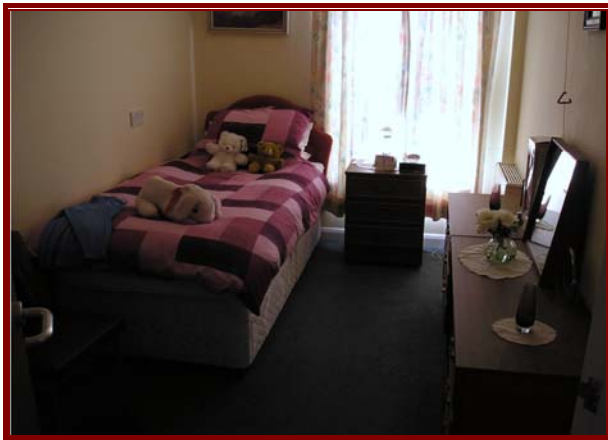
This Statement of Purpose highlights:

- *Our ethos and philosophy of care*
- *The structure of our organisation*
- *The scope of our services*
- *Assessment and admission procedures*
- *Qualifications and skills of our staff*
- *Our Quality Assurance scheme*
- *Compliments and complaints procedure*

INSIDE VIEW OF THE FLATS



The kitchen gives each tenant the opportunity to make their own meals instead of eating in the Restaurant.



Each flat has a cosy modern living room with a TV socket

Tenants take pride in furnishing their own lounges to suit their individual tastes.



AIMS AND OBJECTIVE

The objective of Laburnum Grove is to provide high-quality, client-led care for tenants in a safe, caring and harmonious environment, designed to promote well-being and to enhance independence.

The aims of Laburnum Grove are to:

- *Create* an environment in which clients are provided with modern, accessible housing.
- *Provide* individualised high-quality care and support 24 hours per day, 7 days per week at levels appropriate to clients' needs.
- *Enhance* clients' mental, physical and social well-being through stimulating activities.

ETHOS AND PHILOSOPHY OF CARE

Social care of the older person involves a holistic approach that addresses their physical, emotional, social and mental well-being.

Laburnum Grove provides a variety of care services to benefit the client and enhance their well-being. We offer an appropriate level of care to enable clients to live a fulfilling, enjoyable lifestyle with dignity and respect.

We adopt a proactive approach in seeking the involvement of clients and their relations in the provision of care and operation of the Scheme.

We respect the cultures, customs, lifestyles, personal choices, privacy and values of each client. The vital importance of confidentiality is fully understood and all members of staff are trained to adhere to the Social Services Confidentiality Policy and Code of Conduct.

CARE AND SUPPORT SERVICES

Prior to admission to the scheme, the Manager or one of our Care Co-ordinators will meet clients and their carers to produce an *Individual Care Plan* that identifies the appropriate level of support. The services we provide may include assistance with all aspects of personal care, eg, getting up and going to bed, bathing/showering and assistance with prescribed medicines.

On occasion, clients may need our help in carrying out specialist tasks. Our staff can only carry out these tasks following a **risk assessment** and suitable training from a relevant health professional (eg District Nurse). Such tasks may include:

- Diabetes Management and Insulin Administration
- Helping with administering eye or ear drops
- Iliostomy or colostomy care

Please be aware that all staff must not become involved in the purchase, administration or any such matters concerned with non-prescription medicines.

Care staff are duty bound not to carry out tasks that require the skills and expertise of a clinical professional.

Palliative Care

Our carers are trained to provide palliative care in a sensitive and sympathetic manner.

Support Tasks

The Care/Support Assistant concentrates on tasks such as activities, outings and one-to-one visits to complement the core care provided. Movement 2 Music exercises are held to improve suppleness and co-ordination. In addition, the weekly Bingo session is very popular as is the in-house newsletter.

We are fortunate to have access to the Day Centre bus for shopping trips once per week. Two care assistants have been designated to accompany clients to a local supermarket. The care assistants, passenger assistant and driver are happy to do the shopping for clients who are unable to make the trip themselves.

Domestic Tasks

We have domestic/laundry assistants dedicated to tasks such as assistance with doing laundry and housework inside flats.

Community Links

We work closely with **Age Concern** in Thetford to organise the luncheon services for older people living in the community.

We are friends of the **Bikers Club** who visit regularly. Their annual Easter Run has become a popular event that the tenants look forward to.

Local **Churches** organise in-house services on Sundays.

Tenants are encouraged to continue with any social activities that interest them in order to maintain their established links with friends and family.

Activities

We at Laburnum Grove have proven the *value* of offering a range of *stimulating activities*. These are intended to foster a sense of continuity for the tenants within the community as well as *giving them the opportunity* to maintain their physical, emotional and mental well-being.

Car Boot Sale

The Car Boot Sale, in aid of the amenities fund was a great success. The **Thetford Bikers** attended and joined in the fun by offering rides in return for donations in support of the vital service offered by the Air Ambulance.

The tenants relished the opportunity to relive their teenage years or to try something new as seen in the case of one lady who was 98 on the day and who had never been on a motorcycle before! Which proves that it is never too late to try something new!

Glenn Miller Lunch 2008



Tenants and staff alike revisited the 1940's in the form of a luncheon, comic play, singalong and a live performance of songs from the swing era.