

Sheltered Housing Schemes

Providing homes for older and disabled people is an important part of our work. We have over 300 sheltered homes which include bungalows, flats and bedsits. They all have access to a sheltered housing officer service and 24 hour emergency alarms for people who want to live independently, but with the knowledge that help is available if necessary.

To apply for accommodation in one of our schemes, you need to complete an Island HomeFinder application form. You can pick one up from the Isle of Wight Council or from Medina offices in Lugley Street, Newport, or apply online at www.islandhomefinder.org.uk

Gobles Close

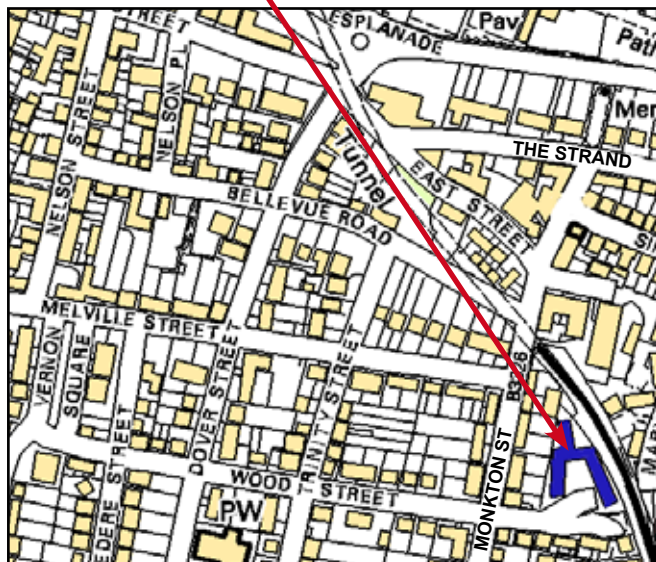
Lower Wood Street, Ryde PO33 2HJ



Main features

- 18 self-contained one-bedroom flats and seven self-contained bedsits
- two storey block – no lift
- age 60+ (or 55+ if registered with a disability)
- Housing Officer on site weekdays
- emergency call system linked to Housing Officer and out of hours Wightcare service
- communal lounge
- laundry
- sun patio
- off street parking
- close proximity to local shops, doctors and bus stop.

Where we are



© Crown Copyright Licence No 100005540

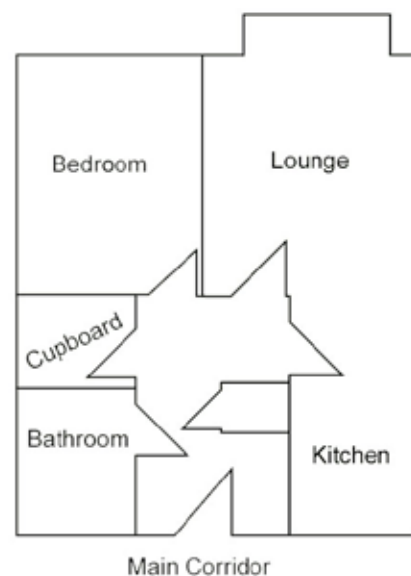
Gobles Close is designed for independent living, with 25 self-contained units located over two floors. Additionally, as with most of our schemes, there is a communal lounge, laundry and sun patio. A variety of social activities is held in the lounge, including tea afternoons and Age Concern Active Networks Club.

All properties are let on an Assured Tenancy basis, and a charge is made weekly, made up of basic rent and a support charge. If you are

eligible, Housing Benefit will pay a proportion of the rent and service charge.

All tenants in our sheltered schemes have access to the services of a Housing Officer, who will ensure the wellbeing of tenants and make sure the scheme is run efficiently.

The Housing Officer is not there to provide personal care or do shopping etc, but can with agreement approach third party agencies on a resident's behalf to help them gain the appropriate support or care required.



A typical flat layout

"I've been encouraged to have adult education to improve my literacy skills ..."

Resident of Gobles Close

To find out more or to arrange a visit please call (01983) 8222811.



Living room



Active Networks Club



Kitchen



Part of the garden