

Sheltered Housing Schemes

Providing homes for older and disabled people is an important part of our work. We have over 300 sheltered homes which include bungalows, flats and bedsits. They all have access to a sheltered housing officer service and 24 hour emergency alarms for people who want to live independently, but with the knowledge that help is available if necessary.

To apply for accommodation in one of our schemes, you need to complete an Island HomeFinder application form. You can pick one up from the Isle of Wight Council or from Medina offices in Lugley Street, Newport, or apply online at www.islandhomefinder.org.uk

Gordon Lodge

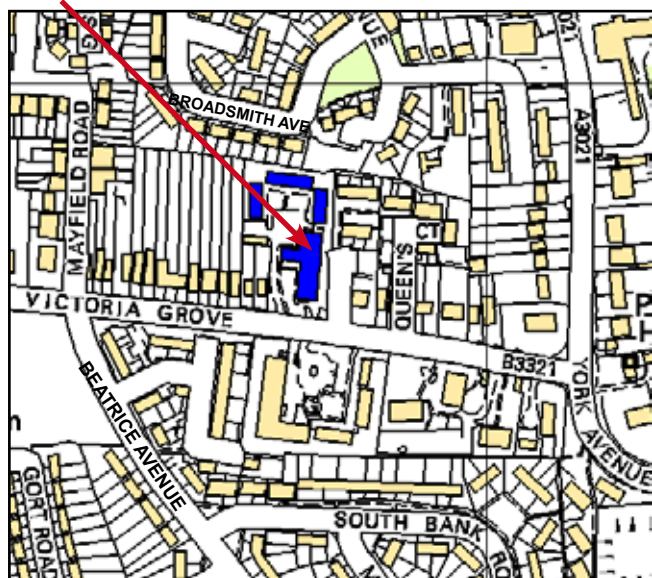
Victoria Grove,
East Cowes PO32 6JH



Main features

- ten one-bedroom bungalows, two self-contained one-bedroom flats and 24 self-contained bedsits
- two storey block (lift)
- age 60+ (or 55+ if registered with a disability)
- Housing Officer on site weekdays
- emergency call system linked to Housing Officer and out of hours Wightcare service
- communal lounge and laundry
- guest suite
- gardens
- off street parking
- close proximity to bus stop.

Where we are



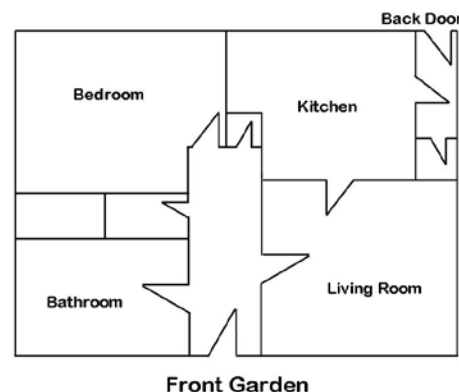
© Crown Copyright Licence No 100005540

Gordon Lodge is designed for independent living, with 36 units located over two floors. Social activities currently include coffee mornings, craft sessions, cream teas and quizzes.

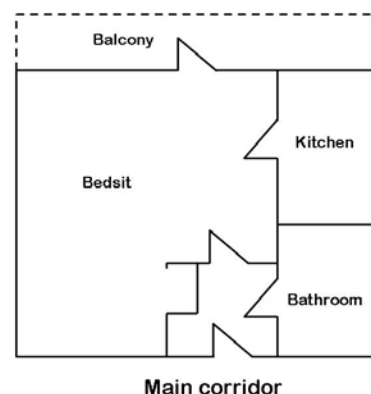
All properties are let on an Assured Tenancy basis, and a charge is made weekly, made up of basic rent and a support charge. If you are eligible, Housing Benefit will pay a proportion of the rent and service charge.

All tenants in our sheltered schemes have access to the services of a Housing Officer, who will ensure the wellbeing of tenants and make sure the scheme is run efficiently.

The Housing Officer is not there to provide personal care or do shopping etc, but can with agreement approach third party agencies on a resident's behalf to help them gain the appropriate support or care required.



Typical layouts: bungalow (above); bedsit (below)



To find out more or to arrange a visit please call (01983) 822811.



Bungalows



A bedsit



Coffee morning in the communal lounge

"I'm so happy in this scheme, with company and friends around me ..."

Resident of Gordon Lodge



Living room in a bungalow