

Sheltered Housing Scheme

The Brambles



One of the courtyard communal gardens

- ♦ The Brambles is a complex of ground and first floor flats arranged around a communal garden. The scheme can be found off Devonshire Road
- ♦ The Local Area (Laindon) Housing Office is located at Clock House, 49 Laindon Centre, Laindon, (01268) 465161
- ♦ The Sheltered Scheme Co-ordinator can be contacted on (01268) 416813
- ♦ The shops at the Laindon Centre some 1/2 mile include a supermarket, chemist and Post Office, whilst a 5-10 min walk away at Royal Court more local shopping is available
- ♦ The nearest Doctors Surgery is also located in the Laindon Centre, the nearest Dentist is in Roberts Road 400yds away
- ♦ First National buses serve the complex from a bus stop under 100yds away in Devonshire Road; the No. 8 bus operates a route that takes in Laindon Centre, central Basildon and Pitsea including Tesco, on a 20min timetable

Useful telephone numbers

Applications/Allocations - 01268 294099 Benefit Agency - 01268 363000
Supported Housing Officers - 01268 465026

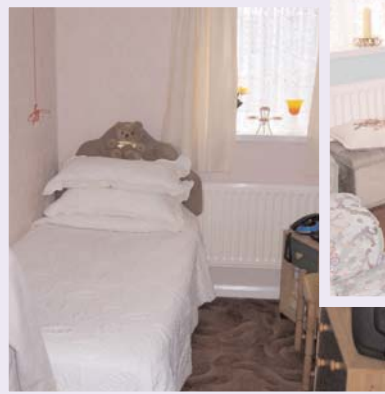
The Brambles



The Common Room

- ♦ The Brambles has a Common Room for use by the tenants and offers activities including: Bingo Weds pm, Sat evening and Sun pm; Craft classes Thurs am. Other activities are carried out without a set timetable. Residents from the Brambles are close enough to two other schemes at Cromer Avenue and Spinneywood to be able to join in activities held there and are made most welcome

- ♦ Individual flats at The Brambles complex have their own front door but are linked to the Scheme Coordinator and/ or Careline by an Alarm System ensuring privacy, security and peace of mind



Interior of one of the flats

- ♦ **Supported People Charge** is a separate amount payable in addition to your rent to cover the costs of the Sheltered Housing Scheme Coordinators and your Support Plan. It will be approximately £17 a week. If you are receiving Housing Benefit or if you were a council tenant before April 2003 this charge will be paid for you
- ♦ **Service Charges** cover the cost of heating, lighting, cleaning and maintaining the communal areas and are also payable in addition to your rent. The cost will be approximately £6 a week and if you are receiving Housing Benefit some of these charges may be paid for you