

Crammer Court Devizes extra care scheme

General information

Factsheet No: 28

Address: Crammer Court, Church Walk,
Devizes, Wiltshire SN10 3AW

Landlord: Aster Living, Sarsen Court,
Horton Avenue, Cannings Hill
Devizes, Wiltshire SN10 2AZ

Scheme manager: Anne Walsh

Telephone: 01380 739694

Email: Anne.walsh@asterliving.co.uk

Properties: 35 x one bed flats, 15 x two
bed flats and a 'pathways' flat.
The pathways flat is available
for a 6 week let for assessment purposes e.g. hospital discharge or for reablement
prior to going home. A person living in a residential care home might wish to try the
pathways flat as a stepping stone into extra care housing to see if this would be an
appropriate option for them. All properties are wheelchair accessible; however,
specific needs will be assessed on an individual basis.

Services: The extra care scheme is staffed 24 hours a day, seven days a week and has a
community alarm service

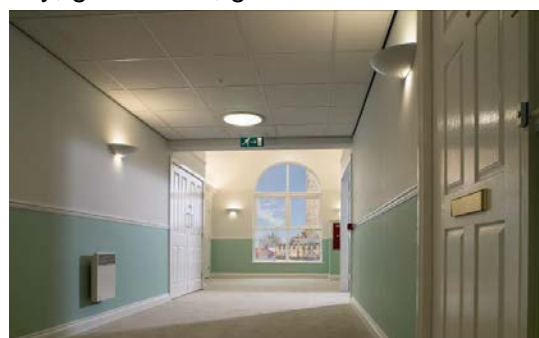
Facilities: Lift, lounge, dining room, restaurant, laundry, guest suite, garden.

Accessibility: Town centre 300 yards away.

Lifestyle: Regular social activities include daily
lunch service, keep fit classes,
dancing and live music, games,
outings and church services.

Pets: Pets are not accepted.

Tenure: Affordable rent.



Crammer Court is an extra care housing scheme owned by Aster Living. It was built in 2004 and is situated on the edge of Devizes within easy walking distance of the town centre and all the facilities there. There are also many facilities and recreational opportunities on offer at Crammer Court itself and tenants are able to choose to participate at a level which suits them. A joint initiative has been established between Aster Living and Wiltshire Council to provide care and support to tenants at all times of the day and night, according to their individual needs and choices.

On-site support

Crammer Court has a scheme manager who is on hand during office hours to provide practical help and support. Staff are trained to provide the support tenants need to run their own homes and live independently. The scheme manager will also keep in regular contact with residents, checking that all is well each day, and helping out in emergencies. Staff may consult the resident's family and voluntary and statutory agencies to make sure that any assessed support is provided.

Although scheme managers are not there to provide care for residents, or to carry out tasks like shopping and cleaning themselves, they will offer advice and help with arrangements for this to be provided through the on site care team.



There is an on-site care and support service 24 hours a day, which means at all times of the day and night.



The cost of extra care

The costs of living at Crammer Court as at June 2010 are as follows:

- **Rent ranges from £81.12 to £90.44 per week**
- **Service charge of £34.89 per week which covers among other things the fire safety and other alarms and heating/lighting the communal areas. Additionally, costs for water are invoiced quarterly.**
- **Support charge of £25.00 per week if you fund your own care which covers the provision of 24/7 support.**

Personal care costs are paid separately and in addition to the costs outlined above.

Tenants may be eligible for assistance towards costs. Regular checks on entitlements to benefits should be carried out, especially if care and support needs change.

Eligibility criteria

The scheme is open to those over 55 years of age, or who are disabled. Although there are no care requirements to be eligible for a flat in this scheme, there is a need to balance the ratio of low to high care needs to ensure that a sense of community can be developed and maintained.

Allocations are made by an allocations panel and properties are allocated on a needs basis.

Further information

For more information about the scheme in general please contact the scheme manager.

To apply for a vacancy at the scheme please complete a housing application form with Homes4Wiltshire, which can be contacted on 01380 734734 or at homes4wiltshire@wiltshire.gov.uk or speak to your local Wiltshire Council Adult Care team on 0300 456 0111.

All information correct at time of going to press 01 October 2012