

Dovestone Gardens

Modern extra care housing
for over 55s, in a vibrant
community setting.

calico
homes


syncora care



Welcome

We are delighted to welcome you to Dovestone Gardens.

It's the first building of its kind in Burnley, providing 93 extra care apartments in a neighbourhood setting near Burnley General Hospital.

These modern apartments have been specially designed for people who require additional levels of support, but also want to stay as independent as possible.

Working with the local community, we've created a vibrant neighbourhood setting where you can enjoy each and every day, knowing that everything you need is close at hand.

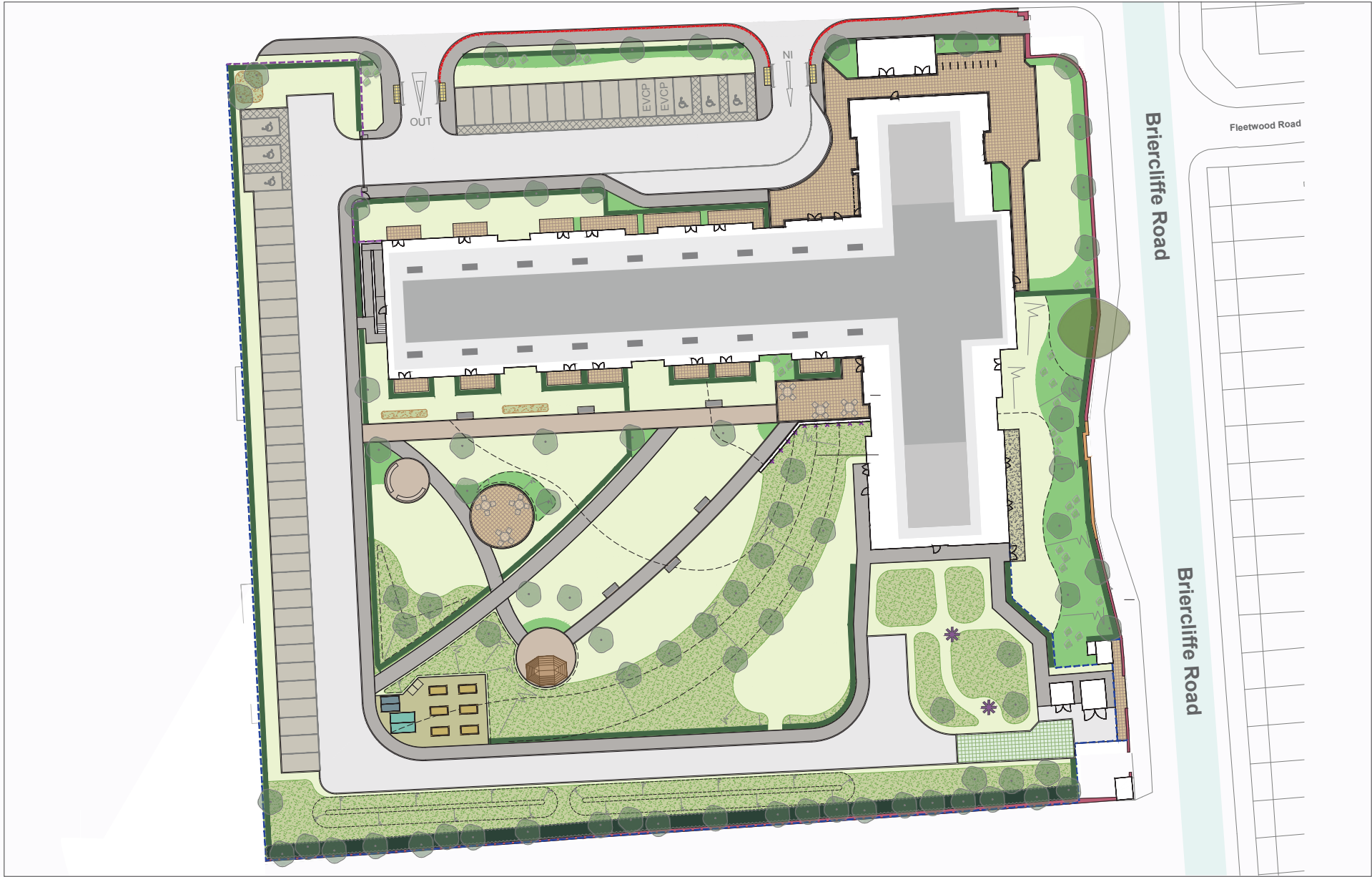
And, as your needs change, you'll also have the peace of mind that there is support available from our qualified team, who truly care about helping you to live your life to the fullest.

We believe Dovestone Gardens is a special place and one you'll want to call home.



Contents

Site Map	3
What is Extra Care?	4
At Dovestone Gardens we have...	6
About the apartments	8
The Bistro	9
Who can live at Dovestone Gardens?	10
How to apply	11
Introducing Syncora Care	12
Be part of it	13
Typical room types	14-15



Dovestone Gardens:
Briercliffe Road, Burnley, BB10 1UE

Telephone:
01282 686300

What is Extra Care?

Dovestone Gardens is extra care housing for people aged 55 and over with varying care needs, and that's different from a traditional care home.

Extra care with Calico Homes allows you to keep your independence and privacy whilst living in your own secure home.

Additional support in extra care is personalised to meet your needs, which may change over time. Care and support packages can be reviewed whenever you need them to be.

At Dovestone Gardens there is a mix of people with different needs with access to 24-hour support from carers.

It is completely up to you which care provider you choose, or which GP surgery or other healthcare and wellbeing services you wish to register with.





At Dovestone Gardens, we have...



- **CCTV and secure doors with buzzer/video intercom system for added peace of mind**
- **On-site bistro for when you fancy something different to eat**
- **24-hour background care provision**
- **Activity room, residents lounge and communal spaces to meet new people**
- **Residents only entrance for added privacy, security and independence**
- **Assisted bathroom**
- **Two main lifts to make sure you can always get around easily**
- **50 car parking spaces for residents and visitors**
- **Wheelchair accessible**
- **Individual post boxes**
- **Scooter storage area to keep your scooters safe and accessible**



*Artist's illustrations



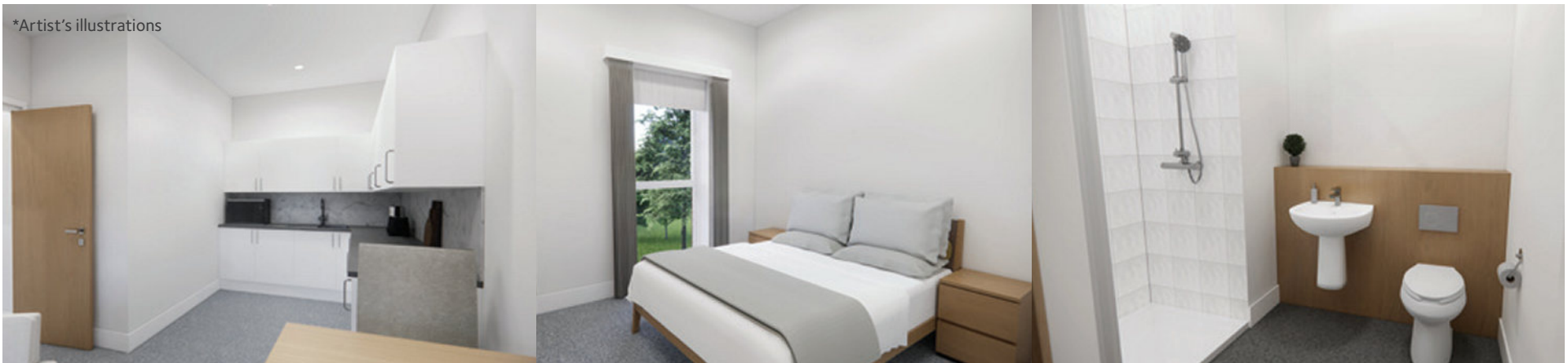
About the apartments:

There are 71 two bedroom apartments and 22 one bedroom apartments at Dovestone Gardens, each roughly 614 square feet (57 m2). You can decorate your apartment to put your own personal touch on your home and every apartment comes with these features:

- **Telecare pendant system**
- **Modern, bright open plan living**
- **Walk-in shower bathroom**
- **Juliette balconies in some apartments**
- **Carpets and/or slip-resistant flooring**

- **Fully fitted kitchen, with oven provided and space for fridge and washing machine**
- **Storage cupboard**
- **Smoke alarms**
- **Individual electricity and water meters**
- **BT connection (but you can choose your own phone/internet provider)**
- **Designed with accessibility and future needs in mind**

*Artist's illustrations



Whether you're in the mood for breakfast, lunch, dinner, afternoon tea, a hot drink or even a cheeky tippie – **Dempsey's** is the heart of the Dovestone Gardens community.

Welcome to the family

Inspired by generations of recipes, cooking styles and cultures, Dempsey's offers a truly unique dining experience. More than just an eatery, it's a welcoming space where residents and visitors alike can relax, connect and savour fresh, nutritious food served in a warm and informal setting.



 **DEMPSEY'S**

Opening soon at

*Dovestone
Gardens*

Who can live at Dovestone Gardens?

To apply for a home at Dovestone Gardens you need to be over 55 and demonstrate that you have the following:

- **A housing need**
- **A care need**
- **Eligibility for housing in the UK**
- **A local connection to Burnley or Pendle**

Applications are banded depending on need to make sure that Dovestone Gardens can be managed, specifically in terms of care.

Red	Higher level of need
Amber	Medium level of need
Green	Lower level of need

We aim to have an equal amount of each category living at Dovestone Gardens at any time.



If you do not meet these criteria, we can still help signpost you to a more suitable alternative, such as:

- **Sheltered or supported accommodation, or residential care**
- **Referring you to Lancashire County Council for a Social Care Assessment**

How to apply



To apply you can:

1. **Speak to your social worker or health professional**
2. **Call us on 01282 686 300**

OR

3. **Complete the form on calicohomes.org.uk/dovestone**

We will then complete an assessment with you that looks at your individual circumstances, including your:

- **Housing need**
- **Financial support needs**
- **Social and health care needs**
- **Any other specific requirements**

These assessments are always confidential and are in your interest as they ensure that you will be safe and secure in your home, taking away any worries that you may have.

As part of the application process, we may also help you to maximise your benefits and see if you are able to receive support from your local authority, if you have a low income.

- | | |
|----------------|----------------------------|
| Step 1: | Initial screening |
| Step 2: | Complete application |
| Step 3: | Assessment by Calico Homes |
| Step 4: | Approval onto waiting list |
| Step 5: | Agree a move in date |
| Step 6: | Full care and support plan |
| Step 7: | Move In |

Introducing Syncora Care



We're working with Syncora Care to offer exceptional standards of care to meet each person's individual requirements.

Whether you are ageing well or have additional care needs, we focus on getting to know all about you so we can provide person-centred care.

We know that decisions around living with care can be difficult, so we tailor our assessments, care plans and training to ensure we meet your individual and specific needs.

We are part of the Calico Group, an innovative collection of charities and businesses working together to make social profit.

Our purpose is to make a real difference to people's lives and we are committed to creating a culture which embodies our values:

- **Going one step further with our customers**
- **Our wellbeing as individuals and teams**
- **Improving and strengthening ourselves and our organisation**

Be part of it



Whether you move into Dovestone Gardens or not, you can still be part of our community.

With our activities room and retirement lifestyle team onsite, you can be a part of daily activities at Dovestone Gardens to meet new people, create friendships and be part of our wider community.

We've designed a beautiful, colourful and enclosed garden for the community of Dovestone Gardens to enjoy, whether it's for relaxing, socialising or taking part in group events.

You can take part in gardening activities. Residents can even have their own space within the gardens to look after.

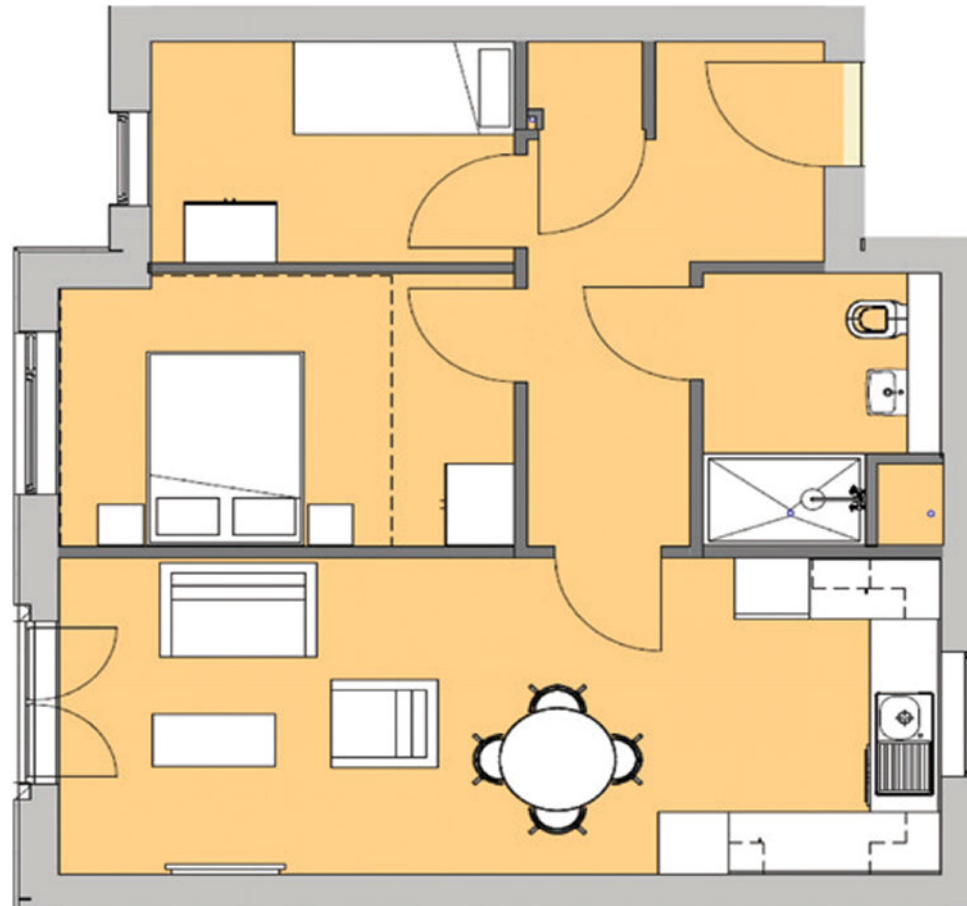
Visit: calicohomes.org.uk/dovestone-gardens

Email: dovestonегardens@calico.org.uk



Example room types

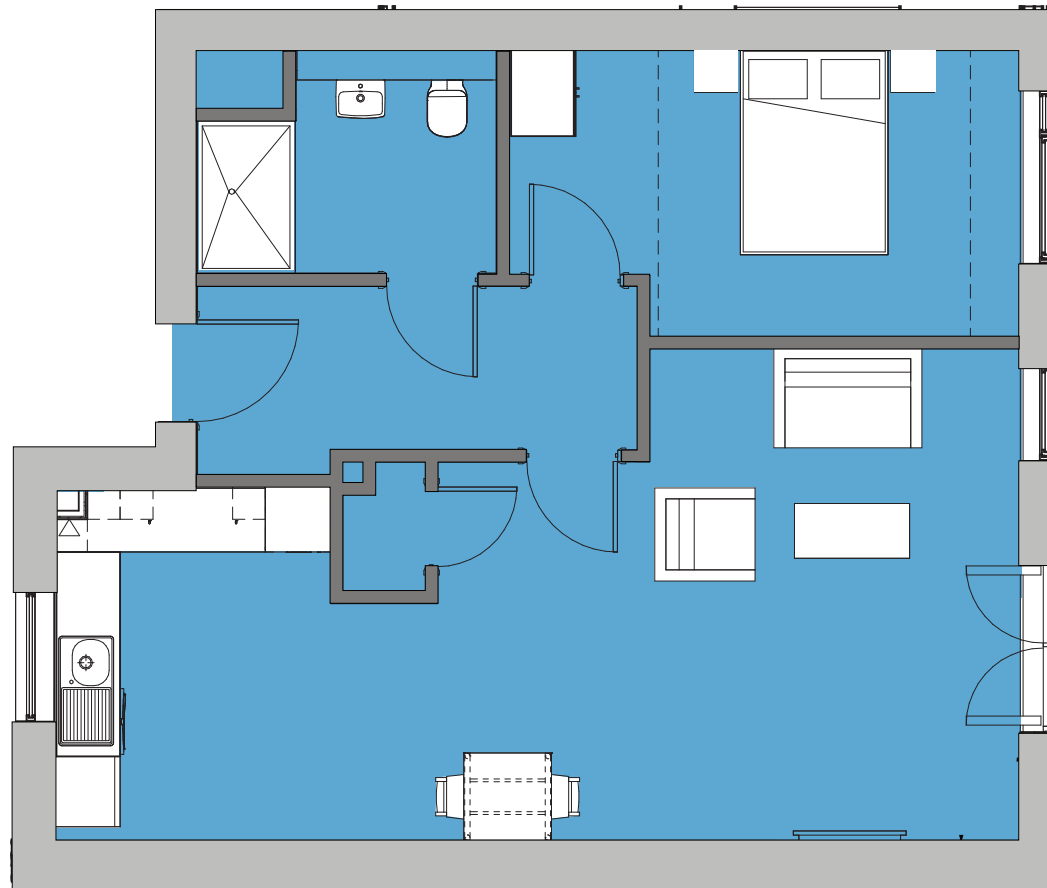
Typical 2 Bedroom Apartment



*Artist's illustrations



Typical 1 Bedroom Apartment



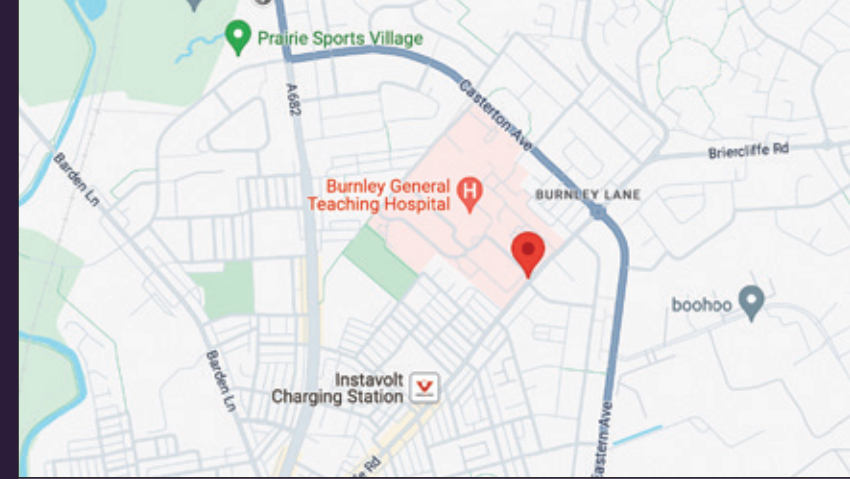
Dovestone Gardens

Phone: 01282 686300

Email: dovestonergardens@calico.org.uk

Web: calicohomes.org.uk/dovestone-gardens

Address: Dovestone Gardens, Briercliffe Road, Burnley, BB10 1UE



If you would like this information in another language or format, please contact English 01282 686300

01282686300 إذا كنت ترغب في الحصول على هذه المعلومات بلغة أو تنسيق آخر، فيرجي التواصل مع Arabic

আপনি যদি এই তথ্য অন্য ভাষা বা ফরম্যাটে চান তাহলে 01282686300 -এ যোগাযোগ করুন Bengali

જો તમને આ માહિતી અલ્પ ભાષા અથવા ફોર્મેટમાં જોઈતી હોય, તો કૃપા કરીને 01282686300 નો Gujarati #સુ પદ્ કરો -

سہ اریکہ ونیسے۔ 01282686300 چیری دا معلومات پہ بلہ ژبہ یا بل فارمٹ کی غور ای، مہربانی وکری Punjabi

W celu uzyskania tych informacji w innym języku lub formacie skontaktuj się z Polish 01282686300 -

نور نورم ایف ساٹواری ویرے ویر بڑا سا ڈارمٹ ویر پور ویر سا ویر ویر، سا ویر ویر Pashto 01282686300 نال سہ ویر ویر -

- سے رابطہ کریں۔ 01282686300 اگر آپ یہ معلومات کسی اور زبان یا فارمیٹ میں چاہتے ہیں، تو براہ کرم Urdu

如果您想要其他语言或格式的信息，请联系 01282686300 Chinese

the calico group

calico homes

syncora care a calico group service

ring stones a calico group service

Lancashire County Council

Homes England

Brock Carmichael

Burnley.gov.uk

NHS East Lancashire Hospitals NHS Trust

IPARTICIPATION WORKS