



**Brunswick
Village**
Extra Care



**APPLY
NOW!**

TO RENT



Apartments to rent for the over 55's...



...a home for life!

Welcome to...

Brunswick Village, an all-new purpose built development for the over 55's.

There are 60, one and two bedroom apartments for rent with lots of on-site facilities, including a bistro, hair salon, laundry room and rooftop gardens with magnificent views over the Manchester skyline.

All properties are self-contained giving you maximum independence but there are also support agencies available should they be needed.

A forever home with all you will ever need right on your doorstep!

There's also a Day Care Centre with age friendly activities, based on the ground floor, which has areas open to both residents and non-residents.

A great way to meet your friends and make new ones.

Get in touch to find out more.



**"I've got a
new lease of life
and beautiful
new friends"**



About Brunswick Village

Brunswick Village has a dedicated team based on-site, designed to cater for a variety of needs for older people.

And although there will be a support team available, not everyone living at the scheme needs to have any specific health needs.

You may need very little or no support but safe in the knowledge the care team will be on hand to help you if your personal needs ever change without having to move home.

"Care and support to help me stay independent."



Location

Brunswick Village is situated in the heart of the Brunswick neighbourhood, famously known as the birthplace of Prime Minister David Lloyd George, who led the Government between 1916 and 1922.

The Brunswick area boasts a strong sense of community spirit and is just minutes away from the vibrant city centre.

Brunswick Village also has a medical centre, chemist, hospital and local shops - all within walking distance.

The University of Manchester can be seen to the west with John Rylands Library a late-Victorian neo-Gothic building on Deansgate, both situated amongst other splendid places to visit such as central library, art galleries, opera house and theatres, with much more such as Salford Quays just a short distance away.

And let's not forget the endless, bars, cafe's, restaurants and shopping...lots and lots of shopping!!

Brunswick has great transport links, including close proximity to intercity routes, Piccadilly railway station, Manchester Metrolink system, and Europe's busiest bus route.



**Brunswick Village,
50 Brunswick Street, M13 9PE.**



Accommodation

There are 60, one and two-bedroom self-contained apartments at Brunswick Village which have:

- Fully fitted high specification kitchens
- Lounge with balcony (in most apartments)
- Choice of views of the city centre, gardens and allotments, the Brunswick neighbourhood and more
- Audio/video intercom access
- Pull cord alarms
- Easy access bathrooms
- Flooring fitted throughout

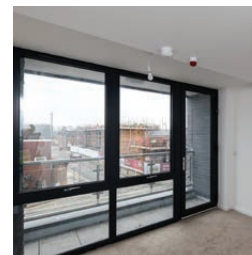
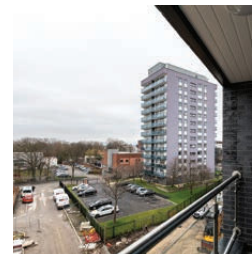
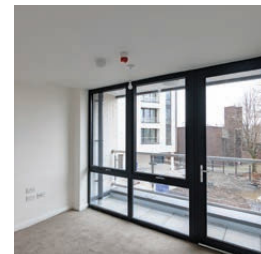
**"I feel safe,
secure and have
a better quality
of life"**

All this and so much more on offer at Brunswick Village.

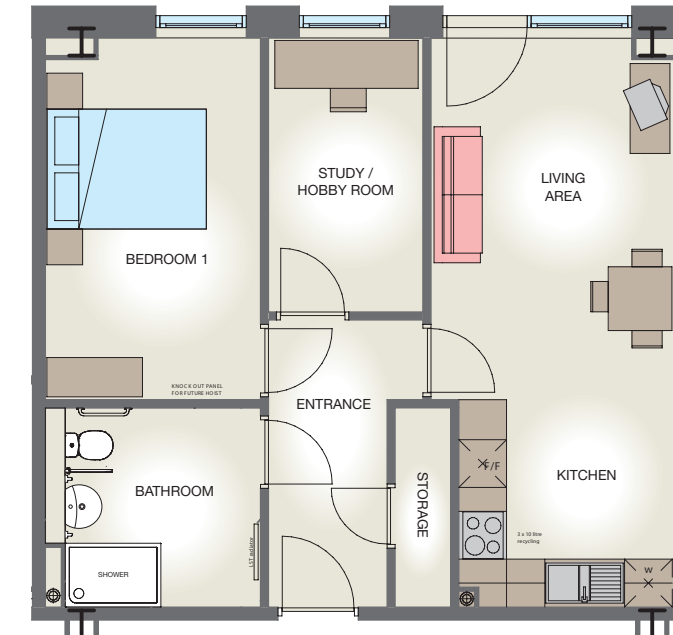
You will be safe in the knowledge you will have everything you need all under one roof, never having to leave for anything if you do not wish to.

There is of course lots to see and do just a short distance away, whether you walk, drive or take public transport, the world is your oyster at Brunswick Village.

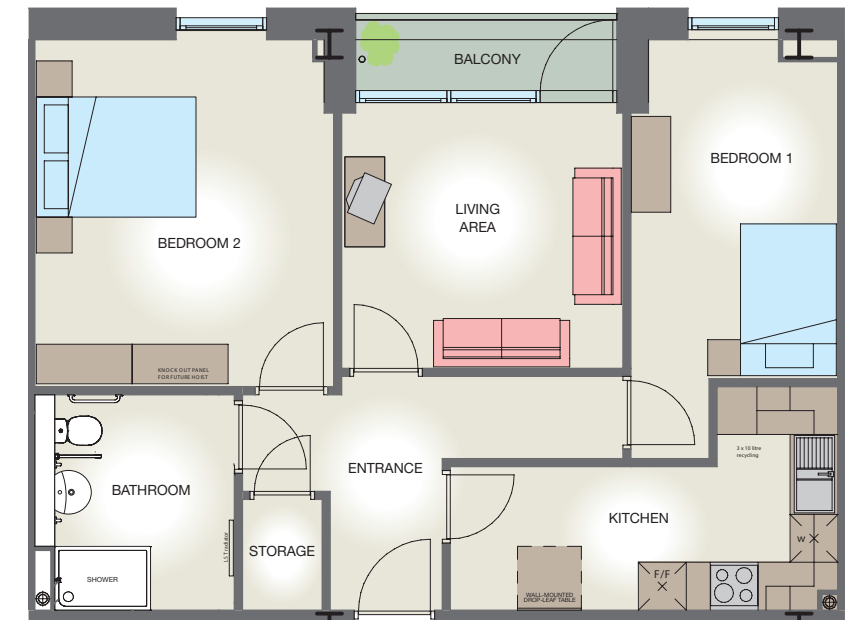
From shopping, sight seeing, historic trails, its all there to be explored.



Plan of a typical
one bed apartment



Plan of a typical
two bed apartment



*For actual dimensions or more
information visit our website.*

Superb facilities

The Bistro, run by Age UK Manchester, is the perfect place to enjoy a meal. They offer a range of breakfast, lunch, afternoon tea and cakes, plus many other snack time favourites.

And if you like, you can have your meals delivered direct to your apartment door.

Additional benefits for residents are:

- Fob access to resident only areas
- Fob operated lifts
- Resident rooftop garden and patio areas

Other amenities on the ground floor include:

- On-site health advice and support
- Laundry room
- Hair and beauty salon
- Shop
- Scooter storage
- Large communal garden
- Community activity and meeting room
- Resident and community activities (post-covid)



In addition to the Bistro, Age UK Manchester will provide;

- **Ageing Well Service**

A weekly programme of activities such as art & crafts, gardening and gentle exercise classes to name a few! There will also be social activities such as quizzes, film shows and themed events in the Bistro area.

- **Advice and Counselling Service**

Our competent advice and counselling workers will be available on a sessional basis.

- The well-established **Day Care Service** will be available to residents and the local community.

For further information please contact Age UK Manchester **0161 833 3944** or email enquiries@ageukmanchester.org.uk



Other partner services



**MANCHESTER
CITY COUNCIL**

Manchester City Council will be your landlord and will provide a dedicated scheme manager service tailored to suit you should you need it. Their support is designed to enhance the physical and mental wellbeing of all residents, and to reduce social isolation.



S4B provides the allocations service to help you find your new home. S4B also provides caretaking, gardening and along with a repairs and maintenance service.

Telephone **0300 555 0128** or email **info@s4bmanchester.co.uk**.



CRG homecare work in partnership with scheme managers to provide specialist care tailored to the needs of the resident should it be required. They also offer help with personal care and household tasks and individuals can have weekly or daily care visits whilst continuing to live happily in their own apartment.

For further information about services please contact **0161 302 2666** or email: **manchestercity@crghomecare.uk.com**.

How to apply

To apply for a place at Brunswick Village or register your interest, please get in touch.

Telephone -

0300 555 0128

Email -

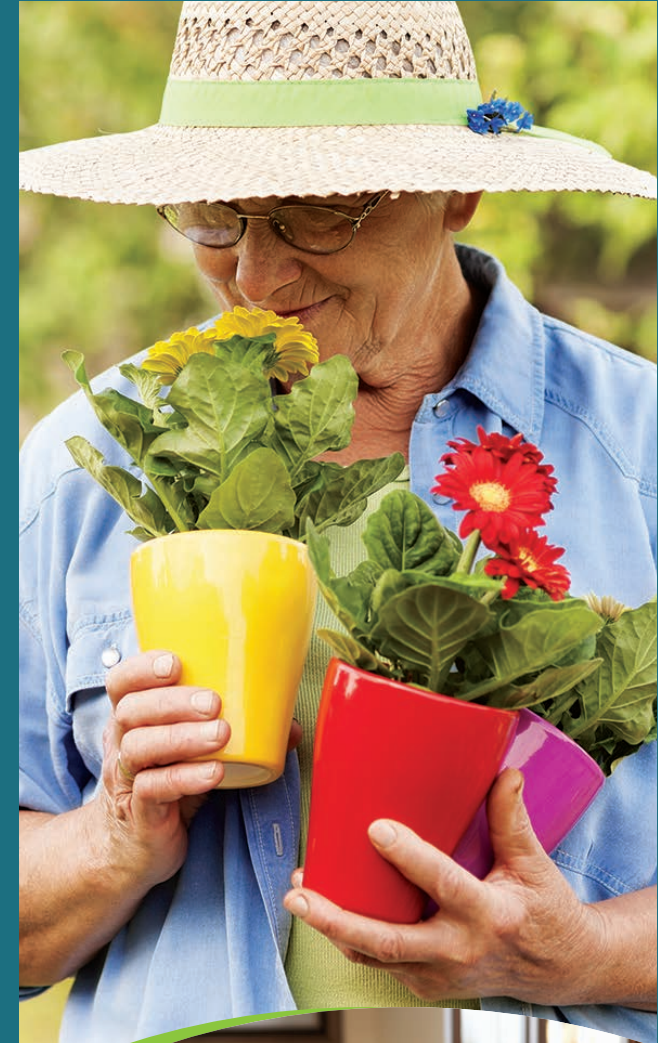
info@s4bmanchester.co.uk

Visit the S4B website for more information or to complete an application form -

www.s4bmanchester.co.uk

Email your completed application form or post to -

**S4B housing office
15 Brunswick Street
Manchester
M13 9SU**





**Brunswick
Village**
Extra Care

TO RENT



W - www.s4bmanchester.co.uk/find-a-home

T - 0300 555 0128 E - info@s4bmanchester.co.uk

S4B housing office - **15 Brunswick Street, Manchester M13 9SU** (by prior appointment only)

Arabic	للحصول على هذه المعلومات بلغتك الرجاء الاتصال برقم الهاتف 0300 555 0128
Bangla	এই তথ্যটি আপনার ভাষায় পেতে চাইলে দয়া করে টেলিফোন করুন 0300 555 0128 এই নম্বরে।
Chinese	如欲索取這資訊以閣下語言編制的副本請致電 0300 555 0128
French	Pour recevoir ces informations dans votre langue prière d'appeler le 0300 555 0128
Somali	Si aad u hesho macluumaadkaani oo luqaddaada ku qoran fadlan wax 0300 555 0128
Turkish	Bu bilgiyi kendi dilinizde almak için lütfen 0300 555 0128 numarayı arayınız.
Urdu	یہ معلومات اپنی زبان میں حاصل کرنے کیلئے براہ مہربانی 0300 555 0128 پر فون کیجئے۔



Onward



**MANCHESTER
CITY COUNCIL**

