



Audley Shiplake Meadows

LUXURY RETIREMENT VILLAGE





What makes Audley Shiplake Meadows special

Nestled in over six acres of beautifully landscaped grounds, Audley Shiplake Meadows lies just beyond the leafy village of Lower Shiplake, only five minutes from the charming market town of Henley-on-Thames.

Shiplake Meadows is situated in a serene location between the breathtaking Chiltern Hills and the River Thames. The village boasts a stunning collection of 65 luxurious 2 and 3-bedroom cottages, apartments, and penthouses surrounded by manicured gardens, wildflowers and mature native trees.

The Parish of Shiplake comprises three villages – Shiplake, Shiplake Cross and the largest, Lower Shiplake itself. This pretty village borders a peaceful stretch of the Thames with idyllic riverside footpaths. It has its own post office, village store and family run butchers.

Shiplake Meadow's location is as tranquil as it is convenient. It's just a 5-minute drive to the delightful riverside town of Henley-on-Thames. Full of detailed Georgian architecture, it offers an array of boutique shops, a Waitrose, a fine selection of bars and restaurants and a farmer's market twice a month.

It can only be Audley.



Audley Health & Wellness

At Audley, living well and staying well is our number one priority, which is why when you move to one of our retirement villages, you automatically become a member of the Audley Club.

Health & fitness

If you'd like to re-energise in our fitness studio, we welcome all abilities and our qualified staff can advise on the right programme or exercise class for you.

Living well

Our open plan bar, lounge and bistro offers a space to relax and if you'd like somewhere quieter than our Private Dining Room is the perfect place.

Wellness suite

Nurture your passions, reignite old hobbies or discover brand new interests in our Wellness Suite –

a space to absorb yourself without interruption or join friends to enjoy a shared passion.

Extra benefits

We also have a range of benefits that are available for all Audley owners at an additional cost, such as:

Hair salon

Bistro

Unwind in the bar and lounge

Private Dining Room

Guest suite



Audley Cares

At Audley Care, our holistic approach means we offer a wide range of support to suit your needs, as little or often as required. Whether that's helping you get out and about or lending a hand at home, our team is passionate about providing lifestyle support that helps you live life your way.

By your side

Our companionship services ensure there's always someone to chat to when you need it.

Tailored support

Your lifestyle professional will complete a Health and Wellness assessment to determine how we can best support you.

Pride in your home

Fresh sheets and spotless floors, we will keep your home clean and tidy.

Lifestyle & nutrition

Your lifestyle professional can help prepare meals for you and monitor your nutritional needs.

Personal care

We can attend to personal care in a respectful, sensitive manner.

Out of hours care

You can choose from a range of extended care services such as night care.

Properties designed with you in mind

The curation of each Audley property has been informed by decades of experience and commitment to the wellness of our owners. Our luxury properties feature spacious rooms, wide corridors, ample areas to entertain and carefully considered storage solutions. Our expert interior designers have created spaces that inspire and support our owners.

Our attention to detail is unparalleled

Every fixture and fitting in an Audley Shiplake Meadows apartment or cottage has been considered to look beautiful, feel comfortable and provide a safe and relaxing living space.

The simple way to sell your home

Moving home can be stressful, particularly if you need to sell your current property first. Audley's specialist partners can remove the uncertainty. They act as cash buyers and will purchase your existing property with no fees or chain to worry about.

Ensuring a stress-free move

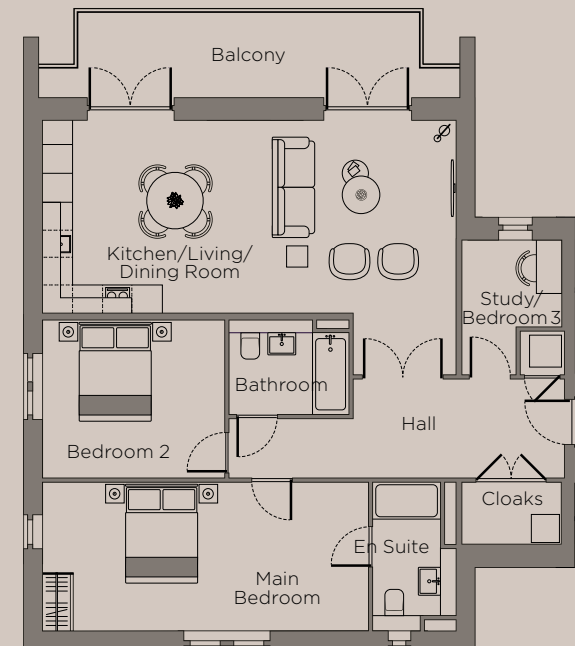
In order to make your move as stress-free as possible, our specialist partners can help streamline the process. We offer a range of emotional and practical support services including Home Buying Service, Downsizing and De-cluttering advice, Bridging options and removals.



Example apartment floor plan

Shiplake Meadows boasts a range of apartments, penthouses, and cottages to suit a variety of needs, please contact us for information on availability.

Plans are for illustration purposes only. Furniture shown to indicate possible room layouts and not included in sale.



OUR OTHER AUDLEY VILLAGES

Binswood, Royal Leamington Spa, Warwickshire

Chalfont Dene, Chalfont St Peter, Buckinghamshire

Clevedon, Ilkley, Yorkshire

Cooper's Hill, Englefield Green, Surrey

Ellerslie, Malvern, Worcestershire

Fairmile, Cobham, Surrey

Inglewood, Kintbury, Berkshire

Mote House, Bearsted, Kent

Nightingale Place, Clapham, London

Redwood, Failand, Bristol

Scarcroft Park, Leeds, West Yorkshire

Stanbridge Earls, Romsey, Hampshire

St Elphin's Park, Darley Dale, Derbyshire

St George's Place, Edgbaston, Birmingham

Sunningdale Park, Ascot, Berkshire

Willicombe Park, Royal Tunbridge Wells, Kent

Wycliffe Park, Horsleys Green, Buckinghamshire

COMING UP

Headley Court, Epsom, Surrey

Lingfield Grange, Lingfield, Surrey

01182 349 278

shiplakesales@audleyvillages.co.uk

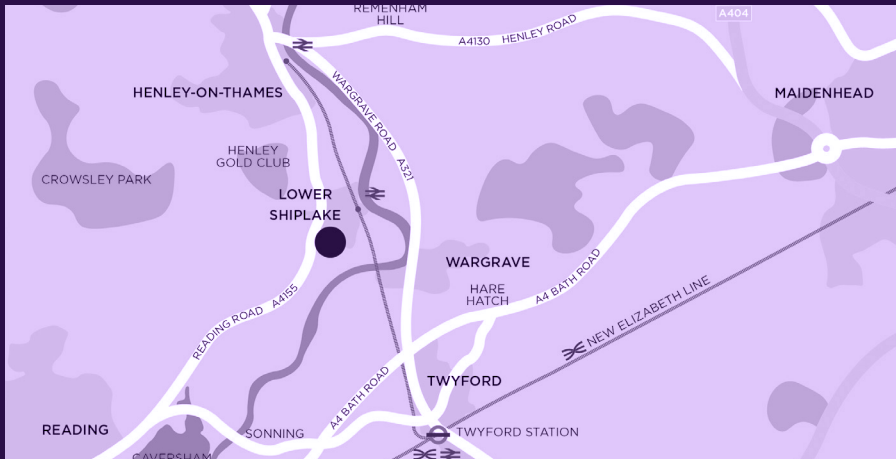
audleyvillages.co.uk/shi

Audley Shiplake, Meadow Chase, Reading Road, Henley-on-Thames RG9 3JN



Scan the QR code to watch our village videos and discover more about life at Audley.

Property images featured in this brochure are from a variety of Audley Villages. All images for illustration purposes only. All information correct at time of production.



Audley Court Ltd, Registered in England and Wales. Company number 05160167. 65 High Street, Egham, Surrey TW20 9EY