



# ROYAL HASLAR

Luxury Waterfront Residences





PORTSMOUTH

ROYAL  
HASLAR

Introducing...

# ROYAL HASLAR

Royal Haslar is one of Britain's landmark heritage sites. Part of the very fabric of our nation. Assured its place in history, it is now protected for the future. Reborn as a luxury waterfront residential village, its unique architectural grandeur and illustrious military heritage will be enjoyed and celebrated by all.





## Grand in conception, magnificent in design

Royal Haslar's prestigious and splendidly preserved historic Georgian buildings have stood the test of time. Designed by Theodore Jacobsen, architect of Dublin's Trinity College, they are a monument to classical design and traditional workmanship. Royal Haslar's restoration offers a unique opportunity to live in modern comfort amongst these elegant buildings, a daily reminder of Britain's distinguished past.







## About the Development

### The restoration of Royal Haslar

Royal Haslar is being restored and regenerated through a programme of conservation and new construction to create a unique residential village incorporating:

- 271 new residential properties
- 244 retirement homes
- A 60 bed care home
- A community healthcare hub
- A boutique hotel and spa
- Retail and licensed premises
- Over 50,000 sq ft of business space

## Living at Royal Haslar

### Escape the hustle and bustle with a waterside home at Royal Haslar

Set on 62 acres of mature parkland on the South Coast of England overlooking the English Channel, Royal Haslar is at the heart of 17 miles of waterfront, marinas and beaches.

With outstanding Georgian architecture and stunning sea views, residents can enjoy an exceptional quality of life living within a tranquil Grade II-listed historic park.

The local area has something for everyone, from bustling cities to beautiful walks, Hampshire provides experiences and entertainment for every age and interest.

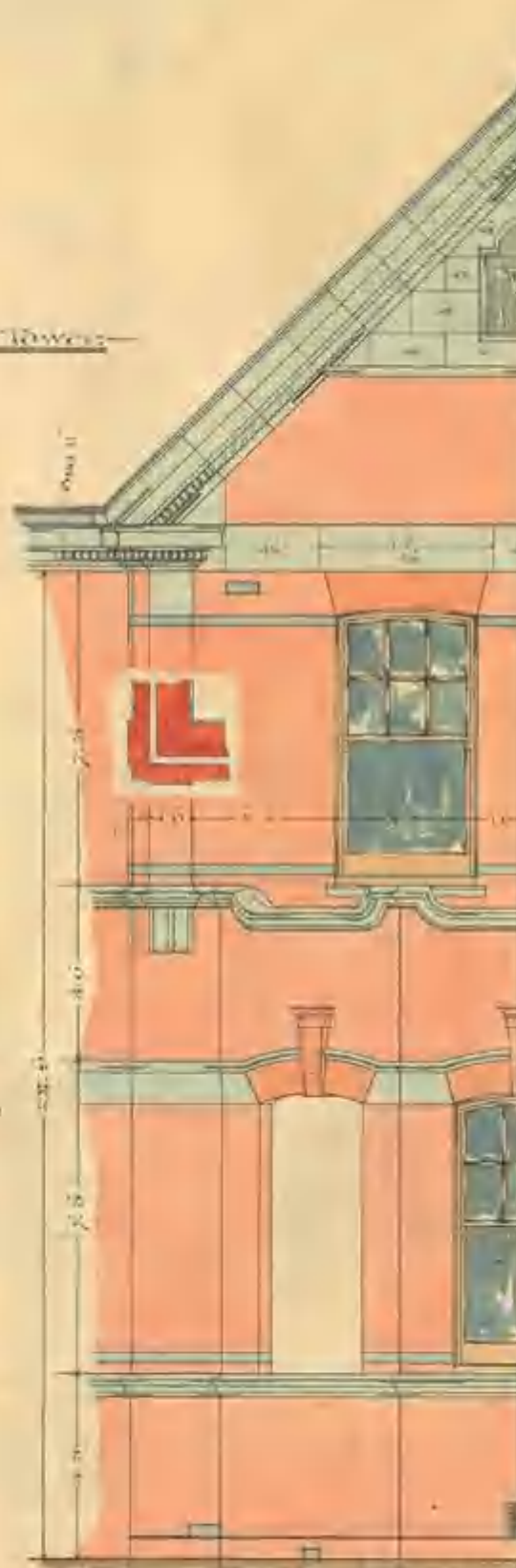
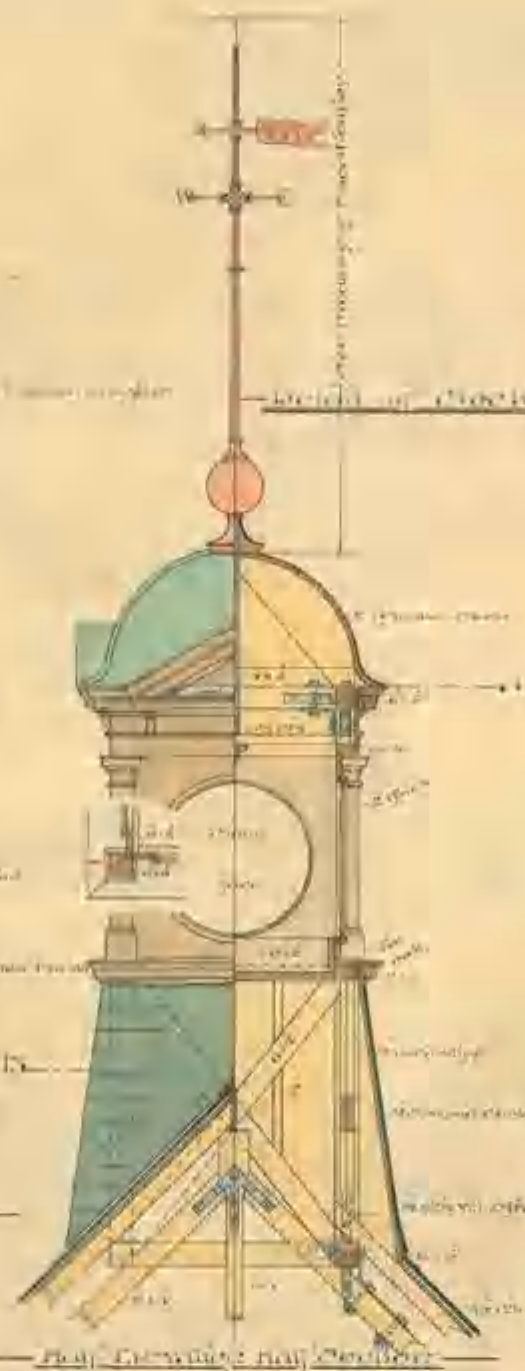
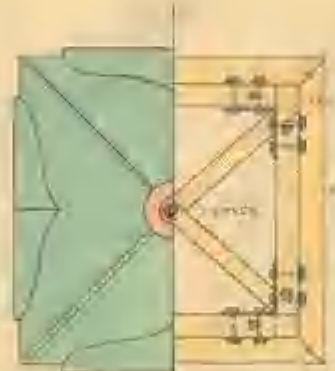
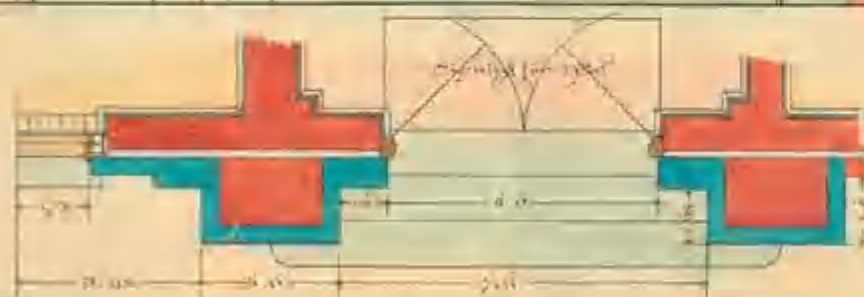


## HASLAR

## - ADMINISTRATION BLOCK .

## 1/2 DETAILS

Scale of 15 to 1



Aug 3<sup>d</sup> 1862

6



# The Benefits of Waterfront Living

Join a vibrant community in a beautifully landscaped development with on-site leisure, retail, hospitality and healthcare facilities

## Landscaped Gardens

### Space to relax & unwind

Royal Haslar is set in 62 acres of Grade-II listed mature parkland and elegant, landscaped gardens overlooking the English Channel. A waterfront walkway runs along the southern side of the park.



## Cafes & Restaurants

### Savour the moment

From morning coffee & croissants to lazy lunches and dinner with friends, Royal Haslar's pub, cafe & tea room will suit every taste and occasion.



## Shops

### All you need, on your doorstep

Royal Haslar will be home to convenience stores for your everyday needs, as well as local businesses



## Medical Centre

### Priceless peace of mind

The on-site medical centre couldn't be more convenient - it's easily accessible from each of Royal Haslar's residential buildings.

## Haslar Marina

### Close to the Solent and open waters

Haslar Marina provides easy access to the Solent and beyond with further sailing clubs at Stokes Bay. The nearby Village of Alverstoke provides local amenities, whilst the 5 minute ferry from Gosport takes you directly to Portsmouth and Southsea railway station with links to London Waterloo in approximately 1 hour 30 mins.



## Gosport & Stokes Bay Golf Club

### A links course with outstanding views

Adjoining Royal Haslar with panoramic sea views, Gosport & Stokes Bay Golf Club is one of the finest courses in the South of England. The friendly club welcomes green-fees and applications for full-time membership.



## Stokes Bay beach

### A hidden gem

Stokes Bay is just 5 minutes from Haslar and provides activities for all the family; from walking trails to Lee-on-Solent, Gilkicker Fort, playing fields, sailing clubs, an ice cream parlour and Pebbles Restaurant all with excellent views of the busy strait and Isle of Wight.



## A Perfect Location

### In the heart of the south coast

Royal Haslar's location provides a quiet sanctuary within easy reach of Portsmouth's vibrant city, with easy access to the beautiful south coast beyond. Portsmouth is just 30 minutes away by road and Gunwharf Quay shopping & leisure district is only 5 minutes by ferry.

► Browse Available Properties at  
[RoyalHaslar.com](https://RoyalHaslar.com)



# History

Boasting wonderful views of the Isle of White, Portsmouth and The Solent, Royal Haslar's serene sea-front location is a breath of fresh air with a wonderfully rich history

## A Long & Distinguished History

### 1745

After submissions to King George II, led by the Earl of Sandwich and the Admiralty, planning for the hospital commenced in 1745. Haslar was to be one of three proposed hospitals to provide care for sailors of the Fleet. The building of the hospital took 16 years and was completed in 1762.



## James Lind

### 1758 - 1783

Many famous men and women have served at Haslar, among them James Lind, the 'father of nautical medicine' who discovered a cure for scurvy. Lind continued his studies whilst Senior Physician at Haslar, for in his time ships routinely landed with many of their crew suffering from scurvy. In 1797 the First Lord of the Admiralty visited Haslar and asked to see a case of scurvy, but not one could be found.

► For more information visit:  
[RoyalHaslar.com](http://RoyalHaslar.com)



## A Masterpiece of Classical Design

### 1753

Haslar was designed by Theodore Jacobsen, FRS, in the manner of the Foundling Hospital (London). Building was under the direction of James Horne, a surveyor, and John Turner, a Master Carpenter from Portsmouth Dockyard. Although no record of a formal opening of the Royal Hospital Haslar can be traced, it is believed to have opened on the 12th October 1753.



## Serving Haslar's Spiritual Needs

### 1762

Completed in 1754, St. Luke's Chapel has served the spiritual needs of Royal Haslar for over 250 years and is open for mass at 11:00am on the 4th Sunday of every month.



Never Was So Much Owed By So  
Many To So Few

## The 20th century

During the many wars of the twentieth century and especially the First and Second World Wars, Haslar was a busy hospital. During and after D-Day, both Allied and enemy Troops were treated at Haslar in great numbers, and Royal Navy surgeons were joined by US Army surgeons in treating the wounded.

## Times Change

### The 21st century

When Haslar entered its fourth century it opened a new chapter in its history, joining in partnership with Portsmouth Hospitals National Health Service Trust in 2001. Blending the best of Medicine in the NHS with the best of Military Medicine at the same time, it was sophisticated hospital with advanced medical technology, housed in a prestigious and splendidly-preserved historic Georgian building.

Times quickly change: on the 31st March 2007 the Royal Hospital Haslar ceased to be a Ministry of Defence-managed hospital, and 254 years of continuous military medical care came to a close.



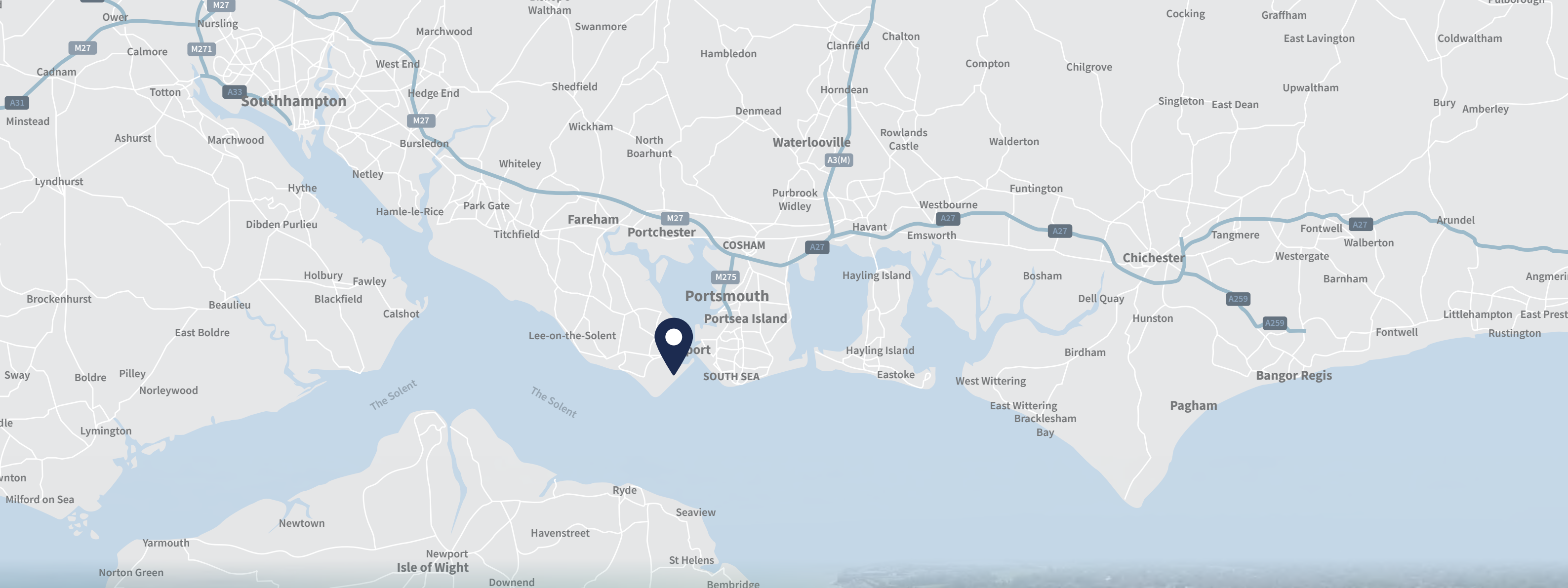
## Custodians of Haslar's History

### Haslar Heritage Group

With thanks to Haslar Heritage Group for all of the information in this section, researched and compiled by Eric Birbeck. For more information on the history of Royal Haslar, please visit the Heritage Group's website [www.haslarheritagegroup.co.uk](http://www.haslarheritagegroup.co.uk)

Haslar Heritage Group are to be granted the use of the Old Medical Supplies Agency building, which is to eventually become a Heritage Visitor's centre.





# A heritage site on Gosport peninsula

Royal Haslar is nestled on the south coast by Alverstoke, surrounded by miles of beautiful waterfront. Portsmouth is just 30 minutes away by road or 5 minutes by ferry. There is easy access to the M27 and M3, while Portsmouth's rail links are excellent: three trains an hour to London Waterloo (one hour 30 minutes+) and Southampton (one hour) and its airport. Ferries and catamarans run regularly to the Isle of Wight (20 minutes), France, Channel Islands and Bilbao.

Royal Haslar, Haslar Road, Hampshire, England PO12 2AA







Please note all specifications, floor plans, finishes and imagery have been obtained from sources believed reliable but may be subject to errors, omissions or variation without notice. This information is not verified for authenticity or accuracy and is not guaranteed. Interested parties are advised to carry out an independent survey of any property prior to purchase. It should be noted that the services and amenities envisaged and detailed above are intended to be introduced on a phased basis as the overall retirement development at Royal Haslar progresses.

These amenities and services may be subject to change without notice. The envisaged site development plans herein may also be subject to change.

Residential Agent



Tel: +44 (0) 23 9251 1515

Lead Agent



Tel: +44 (0) 23 9250 3733

Retirement Agent



Tel: +44 (0)333 321 4060



General Enquiries:

Tel: +44 (0) 23 9250 3733

Royal Haslar, Haslar Road, Hampshire, PO12 2FB, England

[www.RoyalHaslar.com](http://www.RoyalHaslar.com)