

Brooke Mead Extra Care independent living

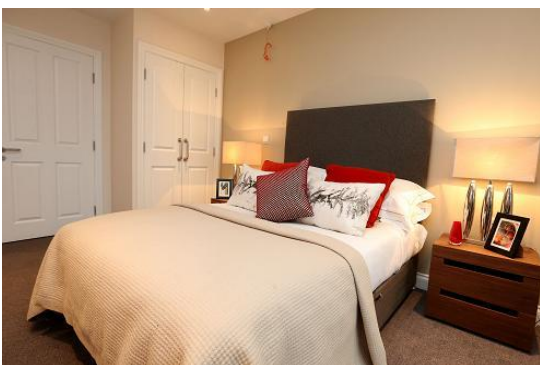
Opening June 2017



Properties are let unfurnished.

Our approach:

Brooke Mead is an exciting new Extra Care Housing Dementia friendly development. It is a purpose built scheme that is situated at the bottom of Albion Hill in Brighton. It has 45 self contained one bedroom flats with a double bedroom and all bathrooms have wet rooms. The scheme has been set up to support people living with a low to moderate level of dementia. Care and support will be provided as agreed on individual's care plans, with the philosophy that 'extra care should be part of the community not a community apart.'



Consideration will be given to other applicants who have cognitive impairments or general frailty due to age if there are properties available.

There will be services provided within the scheme involving the Dementia Action Alliance and Dementia Early Intervention

Services along with a wide range of other activities, all provided within the communal areas which can be accessed by the tenants and the wider community. Brooke Mead includes a garden and a Barista café area. There is not a restaurant on site. The flats will be separate and secure from the ground floor where activities will take place.

There will be care workers on site 24 hours a day seven days a week and a Scheme Manager Monday to Friday during working hours, as well as pendant alarms installed and promoted throughout the building.

Applicants with pets will be considered on an individual basis.



Oven and hob supplied. No other white goods are supplied. Laundry facilities are available on site.

Guidelines:

- The primary focus is for people living with low to moderate dementia.
- The maximum number of hours of care provided is five hours per 24 hours.
- The scheme is a new build and is accessible to people with physical disabilities.

- Priority will be given to applicants aged from 55 although some consideration will be given to younger applicants on a case by case basis.
- The bedroom can accommodate a double bed or two single beds. It may be suitable for some couples.
- Support will be given to the tenant or their partners to move onto another suitable environment appropriate to their needs if required.



All flats have wet rooms (no bath)

Indicative guidelines for the allocation of referrals calculated initially on hours of care delivery provided by home care provider:

- Low - up to one hour
- Medium - up to two hours
- High - up to three hours
- Substantial - up to five hours

The scheme is not suitable for applicants who require over five hours of care a day.

Support from home care provider

- The home care agency is to be tendered for this scheme. Applicants may transfer existing arrangement for care on an agreed basis
- Over night care will be provided by an in house service.
- 24 care services will be provided and is subject to a charge on each flat.

- Care/Support will be provided as agreed on individuals care and support plans.
- Payment for any care/support is additional to the rent and agreed by Adult Social care in line with applicants financial circumstances

Referrals

- All referrals are to be made via Homemove. For more information, go to www.brighton-hove.gov.uk/homemove
- Applicants will have to be eligible to join Brighton & Hove Housing Register under its Allocations Policy



All flats have either a balcony or patio area.

Power of Attorney

As we grow older it is sometimes advisable to have someone who can make certain decisions on our behalf. A Power of Attorney allows someone you have nominated to make these decisions for you if you are not able to do so. If you would like more information on what a Power of Attorney is and how to get one, visit www.gov.uk/power-of-attorney/overview

If you are on certain welfare benefits, you do not need to pay to register a Power of Attorney.