



FRICKLEY MEWS EXTRA CARE

COLLIERS PLACE, OFF WESTFIELD LANE, SOUTH ELMSALL

Opening the door to
independent living





Extra Care living

Frickley Mews is a new housing development of self-contained two-bedroom apartments available to rent.

The development has been sensitively designed to allow people over the age of 50, who have an assessed need for care and support including those living with dementia, to remain independent in their own home for as long as possible.

The apartments are available for single people or couples. Couples are able to stay together as long as one of them meets the eligibility criteria.

Situated in Colliers Place, off Westfield Lane in South Elmsall, this state-of-the-art development consists of 67 apartments. Other facilities include a hairdresser and beauty salon, restaurant and coffee bar.

Frickley Mews has been designed to be fully accessible and dementia friendly. The development will provide a 24-hour, seven days per week on-site team to meet care and support needs.

The cost of the rent and service charge at Frickley Mews and the care and support package will be discussed in more detail on application. People may be entitled to help with these costs.

Peace of mind with Extra Care

Frickley Mews is an Extra Care development.

This means tenants can continue to live independently in their own apartments with the reassurance that there is a care and support team on hand.

Planned care and support as well as emergency and overnight care is available from a dedicated on-site team, 24-hours a day, seven-days per week.

Extra Care offers the best of both worlds.

Tenants still have the privacy of their own home, with their own front door. They also have the peace of mind that their home and all of the communal facilities, such as gardens and lifts, will be maintained to a high standard.

Frickley Mews is a mixed community of people with a range of needs and abilities, including people living with impairments, frailties, disabilities and dementia. It is a place that provides a culture of respect and understanding.

Chevin Housing (part of the Together Housing Group) and Wakefield Council will work with the care provider to ensure people receive the best possible service to meet their needs.



An artist impression of Frickley Mews

Your home, your way

Apartments have been carefully and sensitively designed to make life easier for the people who live here. They feature a lounge which opens onto a fitted kitchen with an integrated electric hob, extractor fan and separate oven.

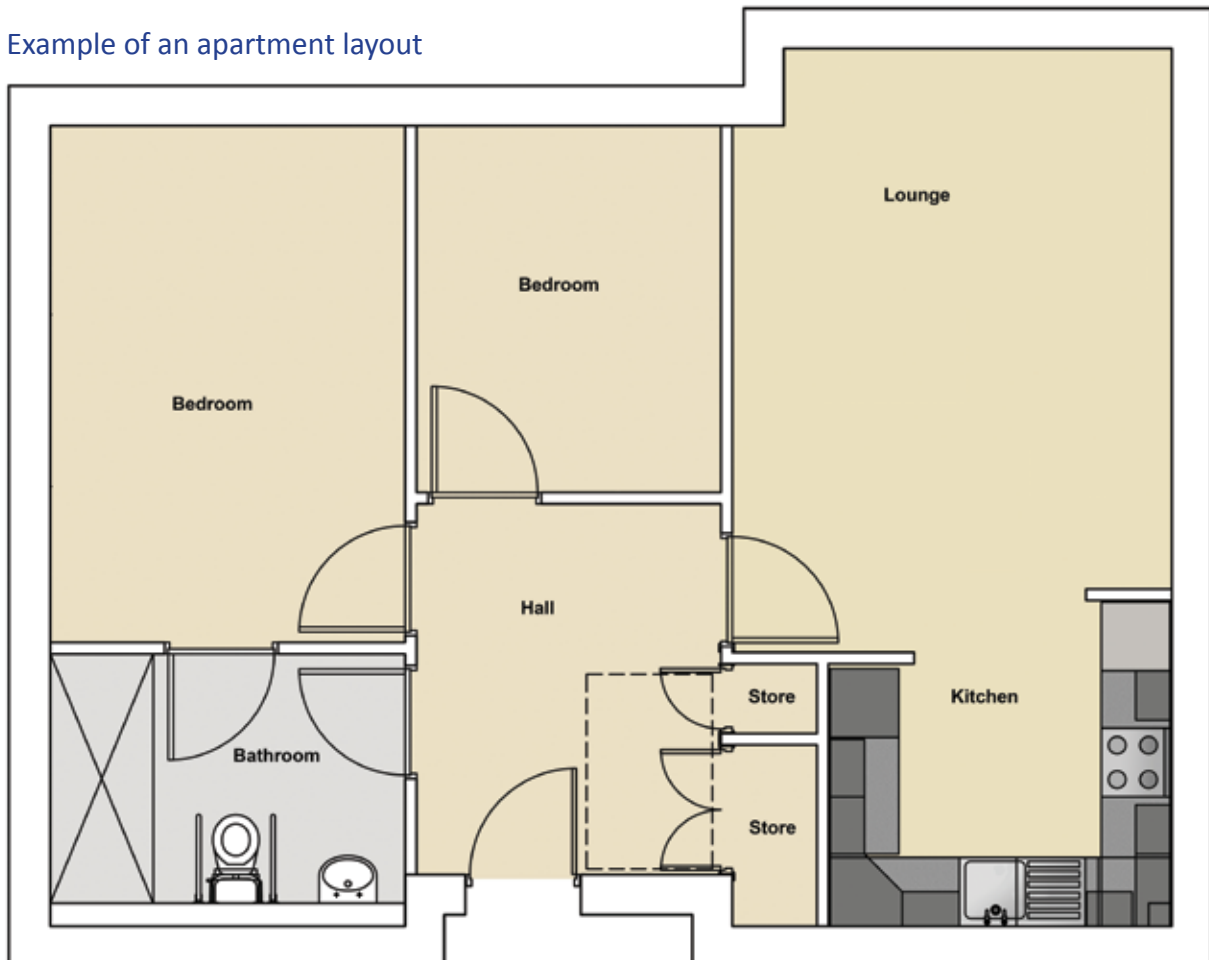
There is a full range of wall and base units with under-unit lighting and plumbing is provided to a washer space. The master bedroom has an accessible en-suite, including a walk-in shower.

All apartments have a secure door entry system, are linked to an emergency call system, have smoke alarms, resident controlled heating and double glazing throughout.

The apartments are unfurnished so people will be required to provide their own furniture, including white goods.



Example of an apartment layout





Outside your front door

There are a wide range of facilities for people living in the development and for the wider community to enjoy:

- **Coffee bar** - where people can buy a drink and relax together.
- **Restaurant** - open to tenants and the local community. A midday meal is provided in the restaurant for people who live here.
- **Hairdressers and beauty suite** - where you can treat yourself and be pampered.
- **On-site parking** - for tenants and visitors.
- **Guest room** - visitors can book and stay overnight for a small charge.
- **Lounge** - attractively laid out with seating for small groups to socialise.
- **Assisted bathing suite** - a hoist facility will help people in need of assistance.
- **Activity room** - a range of activities will take place for people to enjoy if they wish to take part.
- **Garden** - sit outside or enjoy a leisurely stroll in the landscaped gardens.
- **Scooter and cycle store** - the spacious store has charging points for mobility scooters and bicycle racks.

There will also be the opportunity to get involved in tenant-led activities and social events.

Tailored care and support

People living at Frickley Mews will have all the benefits and privacy of having their own home, while at the same time being able to access on-site care and support based on their assessed needs.

A specialist personal care and wellbeing support service will be on site 24-hours a day, seven-days per week. The service will provide planned care and support as well as emergency and overnight care, giving real peace of mind.

The service is flexible and responsive to support the changing needs of individuals.

A housing officer from Chevin Housing Association will be based on site to assist with any tenancy issues and to book in any repairs or maintenance needed.

This is your own home. You keep control over your life, with your rights, choices and wishes respected at all times. People will be treated with dignity and respect.



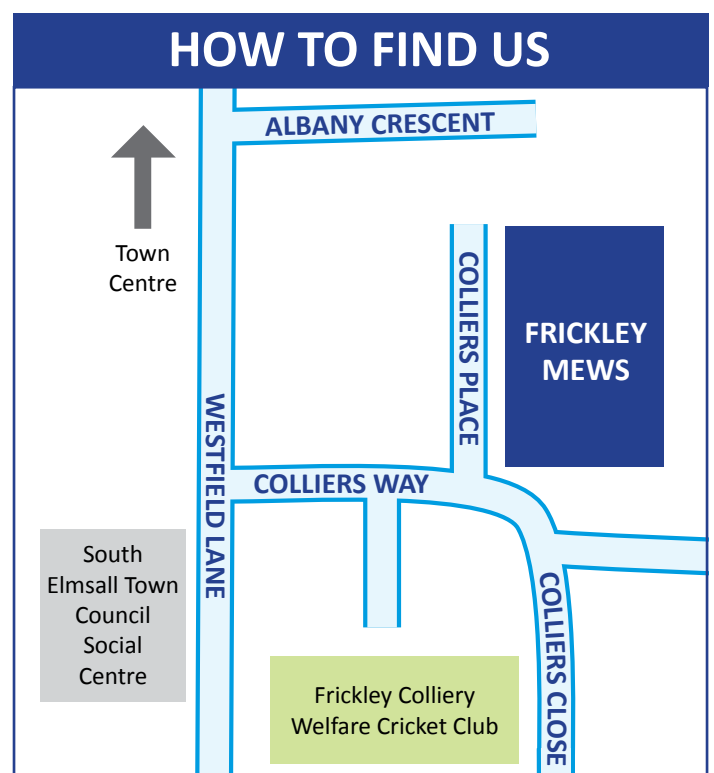


A community within a community

Frickley Mews is situated off Westfield Lane in the town of South Elmsall, West Yorkshire. The development is just half a mile away from South Elmsall's bustling main shopping street, which features a wide variety of shops including chemists, banks, a post office, supermarket, cafes and a library.

An open market is held every Tuesday, Friday and Saturday, with a host of fresh fruit and vegetables, greetings cards, homeware and clothing available as well as the popular butchers and fishmongers.

South Elmsall is well connected to the rest of West Yorkshire and beyond, with a regular bus service and the town's railway station less than one mile from Frickley Mews.





An artist impression of Frickley Mews

Who is eligible to rent an apartment at Frickley Mews?

To be considered for an apartment, people will need to meet the eligibility criteria as follows:

- Aged over 50 years old
- Living in the Wakefield District
- Assessed by Wakefield Council as needing care and support

In the case of couples, one of them must meet the above criteria.

Further enquiries

For more information please contact Wakefield Council on 0345 850 3503.

If you need help understanding this document please contact us:

এই দলিলটি বুঝতে সাহায্য লাগলে অনুগ্রহপূর্বক যোগাযোগ করুন:

اگر اس دستاویز کو سمجھنے کے لئے آپ کو مدد کی ضرورت ہے تو رابطہ کریں:

Jeśli potrzebujesz pomocy ze zrozumieniem tego dokumentu, prosimy o kontakt z:



Working in partnership with Wakefield Council

