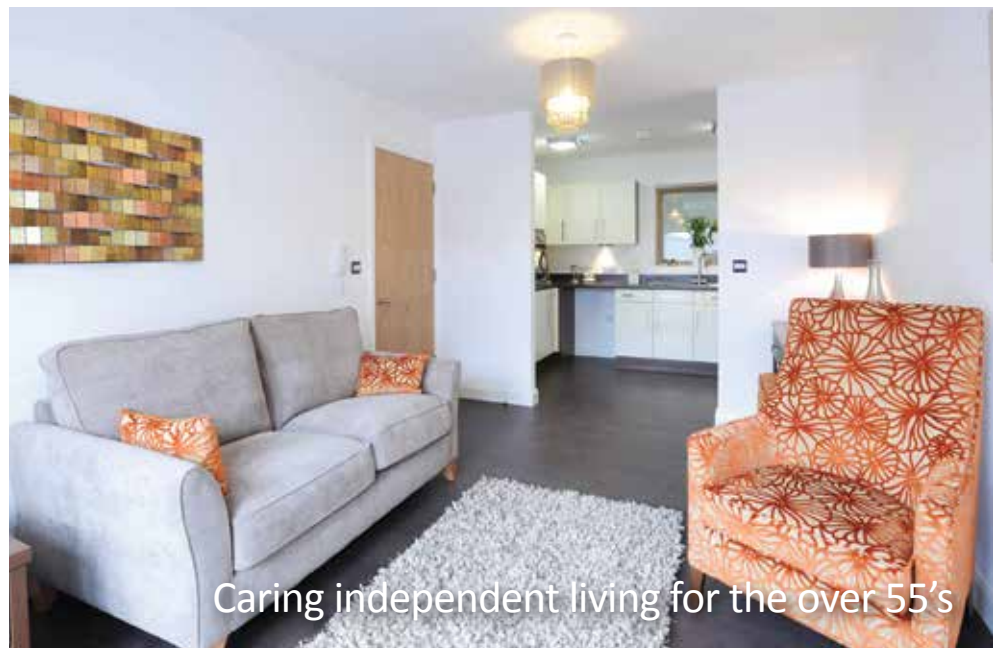


Your
DERWENT
& SOLWAY



Greta Gardens 
Retirement living in the
heart of Keswick



Welcome to Greta Gardens

Your Derwent & Solway provides stylish, high-quality homes for the over 55's, where comfort, leisure and a sense of community combine with a tailored care and support package that changes in line with your needs. Greta Gardens has 69 self-contained apartments for sale, shared ownership and rent.

Greta Gardens gives you freedom to live independently and securely. With the choice of one or two bedroom apartments, which you can buy or rent. Your Derwent & Solway understands the importance of somewhere to call home with help and amenities close at hand.

That's why our apartments are designed with you in mind – with a contemporary kitchen, spacious lounge and specifically designed shower room, there's plenty of room for all your possessions and even a pet.

Living independently offers you the choice of how to spend your free time. With fantastic facilities on offer, there is always something to do at Greta Gardens, whatever your mood.

You'll have your own front door, with access to great communal facilities. For extra peace of mind there is an emergency response system as well as care and support available to suit your individual needs (subject to assessment).



Why choose retirement living?



Greta Gardens is designed around your individual needs, enabling you to remain independent in your own home, with the flexibility of support and care as and when it's needed.

Retirement living is ideal if your present accommodation no longer meets your needs or if you feel isolated or lonely. Greta Gardens gives you the freedom to choose.



Greta Gardens offers both one-bed and two-bed apartments.

Whichever you choose you'll be investing in a property finished to an excellent standard. Your home will include a spacious, open plan living room, a fitted kitchen and a wet room with a walk in shower.

All ground floor apartments have fenced patio areas. Some apartments above the ground floor offer a mixture of walkout or Juliet balconies.

The kitchen includes:

- Tiled splash back
- Integrated oven, hob and extractor
- Anti-slip flooring

Safe, easy-access wet room with:

- Thermostatically controlled shower
- Wet room shower system
- Anti-slip flooring
- Shaver point over the mirror

Other general apartment information:

- The building is heated by an efficient combined heat and power system supplemented by solar photovoltaic panels providing renewable energy for the whole building
- Telephone points in the living room and main bedroom
- Fire and smoke alarm
- Phone entry system
- Emergency call system



What facilities are on offer?

Why not treat yourself?

With a wide range of facilities on offer at Greta Gardens, your days will be full of interesting and exciting opportunities. Why not enjoy a meal in our on-site bistro or take time out and relax in our luxurious pamper bathroom?

The list of facilities to choose from is endless, you could enjoy:

- Our bistro
- Our hairdressers and beauty salon
- Our communal lounge
- The pamper bathroom
- Landscaped communal areas
- Hobby and craft rooms
- A range of organised social activities

There is really no need to leave the comfort of Greta Gardens, we have everything you and your family could want, all under one roof.

Family and friends are also welcome to come and enjoy the fantastic facilities on offer, making Greta Gardens a great place to visit.



What can I expect from Your Derwent & Solway?



At Your Derwent & Solway we believe life is what you make it.

Greta Gardens has its own Scheme Manager who organises regular activities for residents. By working closely with you, a diverse range of activities are regularly on offer for you to enjoy. Giving you the opportunity to choose, how and when to join in.

Typical activities include:

- Film club
- Coffee mornings
- Fund raising events
- Bingo
- Keep fit
- Craft activities
- Supper clubs
- Choir



What are my service charges?

When you move into your apartment at Greta Gardens, you will need to pay a service charge; this charge covers the cost of the following services:

- Communal cleaning, heating, lighting and water
- External window cleaning
- Garden and grounds maintenance
- External buildings maintenance
- Buildings insurance
- Refuse collection
- On-site staff



How do I apply for an apartment?

Applying for an apartment at Greta Gardens couldn't be easier, simply give our sales team a call on LoCall 0845 618 5008 and request one of our application packs. Our friendly and helpful sales team will take down your details and send a pack direct to your door.

We will assess your application and be in touch to discuss your requirements.

If you would like to enquire about a sales apartment, please call us on LoCall 0845 618 5008. If you are enquiring about a rental apartment please call Your Response on 0345 345 0272.

