

CHERRY TREE COURT

Essington



careplus

Care and Support
Services

AVAILABLE HERE

careplus
make every day amazing

Cherry Tree Court

Introducing Cherry Tree Court



Located in Essington, South Staffordshire, Cherry Tree Court comprises of 66 modern apartments for the over 55s, all featuring their own kitchen, bathroom, spacious living area and either one or two bedrooms. Each apartment has been designed with care and to a high specification, offering you comfort and independence whatever your life-circumstances.

Cherry Tree Court also boasts a number of communal spaces for the use of residents and the local community – ideal for socialising with friends or having coffee with a neighbour.

For complete peace of mind

Cherry Tree Court benefits from Care Plus care and support services, providing independent living with a helping hand when needed.

As a resident at Cherry Tree Court, you will benefit from a team of experienced on-site staff, who we've hand-picked for their skill and passion for providing the best possible care. This service includes your own dedicated member of staff, who will work to understand your precise needs, will help provide an ongoing support programme and will assist you in planning for your future*.

A member of staff is on-site 24 hours a day to provide the following:

- Help in emergencies (such as falls or unexpected illness)
- Daily wellbeing calls to check that you are ok
- Advice on health and benefit income
- Help to plan and arrange further care and support as your needs change
- Help to organise social, leisure and educational opportunities that aim to fulfil your ambitions. This could include exercise classes, learning and educational training, social outings and activities, and health advice courses – the sky is the limit!

In addition, residents of Cherry Tree Court have the option of drawing on additional Care Plus household support and/or personal care support should they require these services at any time. Please ask for a copy of the Care Plus brochure if you would like further information.

*A weekly Wellbeing Support Charge applies to all residents living at Cherry Tree Court – please see the enclosed Charges Sheet

Communal facilities include:

- Open plan reception area
- Restaurant that offers at least one home-cooked meal a day plus snacks and drinks. The restaurant is available for use by residents, visitors, local residents or people using Cherry Tree Court for activities or events.
- Hair and beauty salon
- Residents' lounge
- Multi-functional hobby room
- Car parking for residents, visitors and staff
- Shop
- Communal IT facilities
- Assisted bathing (for those who require a little help)
- Communal Laundry



For more information on Care Plus care and support services, please ask for a brochure.

Spacious modern apartments

The apartments at Cherry Tree Court have been designed with you in mind. Generously sized rooms with modern interiors offer you space to enjoy life, entertain family and friends, and relax.

Each apartment has a stylish kitchen and a modern wet room as well as a spacious living area and either one or two bedrooms. On-site CCTV and an easy-to-use door entry system provide peace of mind, allowing you to control access to the building from the comfort of your own home.

In addition, in each apartment you'll find a host of features that make life easier and more comfortable. The stylish shower room features easy grip taps and a walk-in shower complete with a slip-resistant floor.

A call system is installed in each of the apartments, linking you to a member of staff, day or night. Pendants and fall detectors are also available, should you require added reassurance - help is just a moment away should you need it.

Kitchen

- Choice of 3 fully fitted kitchens
 - Maple units with granite-style worktop
 - Gloss white units with granite-style worktop
 - Country cream units with granite-style worktop
- Choice of brick, cream or coffee coloured tiles
- Spotlight lighting
- Integrated Zanussi oven, hob and extraction hood
- Easy grip lever taps
- Slip resistant flooring fitted as standard

Wet room

- Walk-in shower
- Large cream or gold tiles with feature tile in mocha or beige.
- Easy grip lever taps
- Slip resistant flooring fitted as standard
- Spotlight lighting

Heating

- Independently metered gas heating

Safety & security

- Security intercom entry system
- Electronic key fobs offering residents and staff access to designated areas
- Apartment front doors feature a multi-point locking system
- 24 hour CCTV surveillance
- Window locks
- 24 hour call system linked to a member of staff
- Smoke alarms
- BT phone line in the lounge and bedroom

Television, phone and computer access

- The living room has connection points for both terrestrial and satellite TV, a phone connection point and a data point for computer access.
- Each bedroom also has a TV connection point



Cherry Tree Court

Easy ways to rent



Cherry Tree Court is managed by Care Plus on behalf of South Staffordshire Housing Association (SSHA). SSHA is recognised throughout the Midlands as a leading housing provider. We aim to develop an increasingly exciting and innovative range of solutions that help people flourish in all aspects of their lives.

Our excellent staff are trained to adapt and tailor services to your exact needs, and provide a customer experience that is second to none. Care Plus manages the building and communal areas, so the development always looks its best.*

*A weekly Service Charge applies to all residents living at Cherry Tree Court – please see the enclosed Charges Sheet

Rent your apartment

The apartments at Cherry Tree Court are allocated through a lettings panel. Please contact SSHA on 01785 312000 or visit www.care-plus.org.uk for more information. Throughout the application process you will be supported by our friendly advice and support team. To ensure that you are maximising the financial support you're entitled to, just give them a call. Our care and support team can provide more information on the apartments available and a whole host of other information to help you decide what's best for you.

Moving in

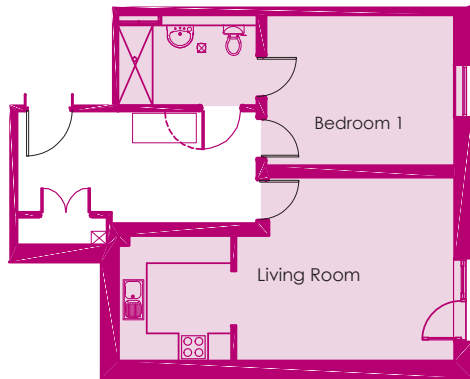
Moving home should be an exciting, enjoyable experience. That's why, at Cherry Tree Court we have a whole range of services to make your move a smooth one. Finishing touches like hanging pictures and fixing up curtain rails are all part of feeling at home. Our moving-in service can help you with all of these. Just let us know and our fully trained team will be round to help.*

*Please note: The move-in service is charged at a small fee. Please ask for details.



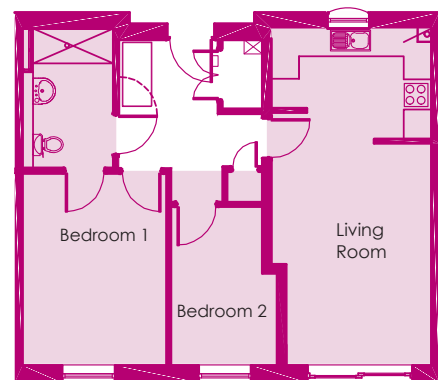
Plans

Apartment Type 1



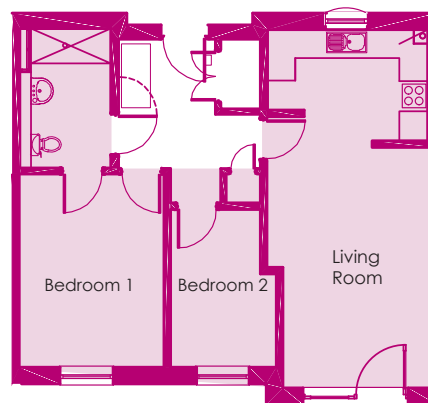
Area
60sqm
**Kitchen/
Living Room**
4.70m x 3.96m
Bedroom
4.05m x 3.24m

Apartment Type 2



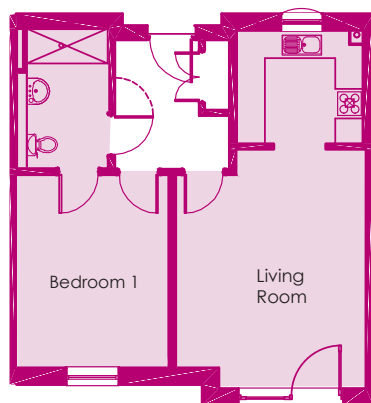
Area
63sqm
**Kitchen/
Living Room**
4.77m x 3.43m
Bedroom 1
4.12m x 3.09m
Bedroom 2
3.41m x 2.27m

Apartment Type 3



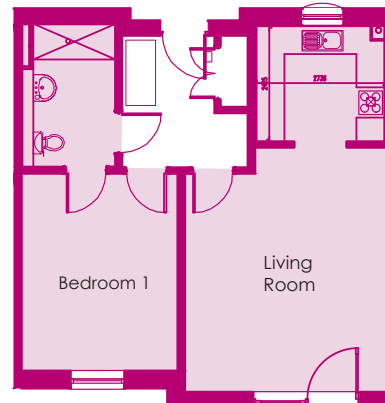
Area
63sqm
**Kitchen/
Living Room**
5.16m x 3.50m
Bedroom 1
4.13m x 3.09m
Bedroom 2
3.38m x 2.26m

Apartment Type 4



Area
55sqm
**Kitchen/
Living Room**
5.16m x 3.50m
Bedroom 1
4.14m x 3.29m

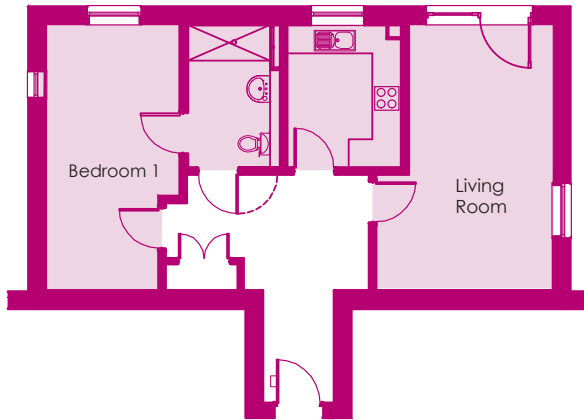
Apartment Type 5



Area
56sqm
**Kitchen/
Living Room**
5.09m x 4.26m
Bedroom 1
4.14m x 3.27m

Plans

Apartment Type 6

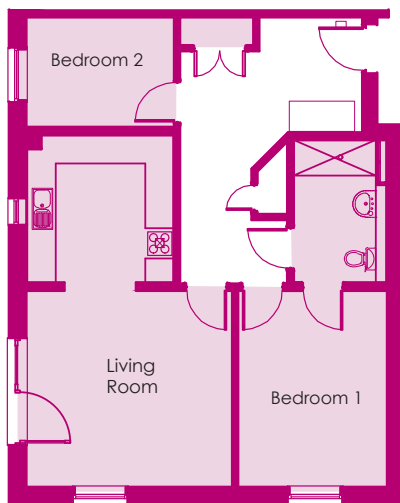


Area
63sqm

**Kitchen/
Living Room**
5.59m x 3.71m

Bedroom 1
5.59m x 2.82m

Apartment Type 7



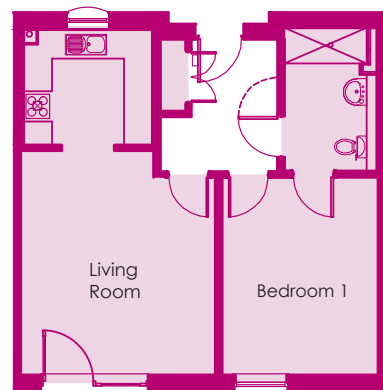
Area
73sqm

**Kitchen/
Living Room**
4.32m x 4.12m

Bedroom 1
4.12m x 3.13m

Bedroom 2
3.10m x 2.31m

Apartment Type 8

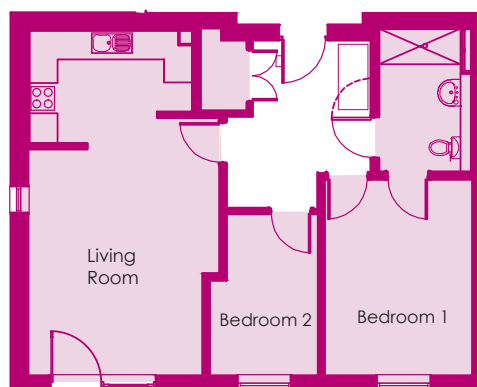


Area
53sqm

**Kitchen/
Living Room**
4.69m x 4.08m

Bedroom 1
4.13m x 3.27m

Apartment Type 9



Area
66sqm

**Kitchen/
Living Room**
4.74m x 4.01m

Bedroom 1
4.11m x 3.11m

Bedroom 2
3.39m x 2.82m

Whilst every care has been taken in preparation of information in this brochure accuracy cannot be guaranteed and the contents do not constitute a contract or warranty. Dimensions are given for guidance only and we would advise that properties are physically measured.

Acton Court Acton Gate Stafford Staffordshire ST18 9AP
T: 01785 312000 F: 01785 312100
E: enquiries@care-plus.org.uk W: www.care-plus.org.uk

Proud member of

housingplus[™]
together for the right reasons

Our Partners

ssha[™]
your local housing provider

PROPERTYCARE[™]
your customer care guarantee

careplus

Care and Support
Services

AVAILABLE HERE