

Swallow Wood,

Mexborough, South Yorkshire

Nursing Care



Person-centred care and support



We understand that choosing the right care environment is an important decision, and at MHA we care about your new home as much as you do. Having worked with older people for nearly 70 years, we have used our experience to develop a special service at Swallow Wood offering:

- nursing care within a friendly home environment
- a personal care package tailored to meet your individual needs
- an on-site dedicated staff team to provide you with 24-hour care

MHA – Where People Care

Making the decision to move into care can be a challenging time, and we aim to reassure you that it can be a move towards a more fulfilling later life. MHA's care homes offer a comfortable environment that provides peace of mind, security, support and stimulation. We see every resident as a unique individual and provide care that is based on respect and loving support.

Swallow Wood

Purpose built in 1991, Swallow Wood is nestled within beautiful gardens full of shrubs and mature trees, but also conveniently close to local amenities and shops. The home covers two floors, with space for 38 residents. Here we provide nursing care in an environment designed for your ease of access and comfort, with an on-site dedicated staff team to provide you with 24-hour care and support.



Your Accommodation

As a resident, you'll enjoy staying in your own private single room, designed to make your life at Swallow Wood a relaxing and comfortable one. Bright and airy, your room comes complete with high-quality furnishings and is yours to personalise to your own taste and make your own.

The Care and Support Service

Our Manager is a fully qualified professional who leads a dedicated care team including nurses and care and support staff. All our staff members are fully trained in MHA's high-quality care and provide individual support to residents round-the-clock. They play a vital part in creating the natural, homely atmosphere within Swallow Wood.

Personal Care and Support

We aim to give each individual person-centred care within a calm and relaxed environment. We encourage you to share in the development of your own personal care plan and we will organise daily activities to suit your personal interests and abilities to maintain life skills.

Your keyworker will spend time with you to develop your individual care plan and inform other staff about how you wish to spend your time. This way we can ensure that we address all your personal needs.





Nursing Care – Our 24-hour nursing care is provided by professional qualified nurses and trained care staff. We seek to meet increased physical needs and mental frailty with our on-going personalised nursing care.

Most importantly, we ensure each resident is treated with the respect and dignity that we all deserve.

Health Care

As a resident of Swallow Wood, you will have access to the full spectrum of local health and medical services such as your own GP, hospital appointments and community nursing services. The chiropodist, optician, occupational therapist and dentist all visit residents regularly.

All you need to do is inform a member of our care team if you would like to make an appointment with one of these health professionals.

Cleaning and Laundry

Our Domestic Assistants are responsible for the cleanliness and maintenance of the home and will provide you with a thorough room cleaning service on a regular basis.

Our laundry facilities are fitted out to commercial standards and your personal washing will be carefully cleaned and returned to you within 48 hours.



Meals and Refreshments

Our food is freshly prepared on site by trained and experienced staff. Daily menus are prepared in consultation with residents; this enables us to provide you with tasty and interesting meals which meet your dietary requirements as well as your own individual preferences.



Security and Peace of Mind

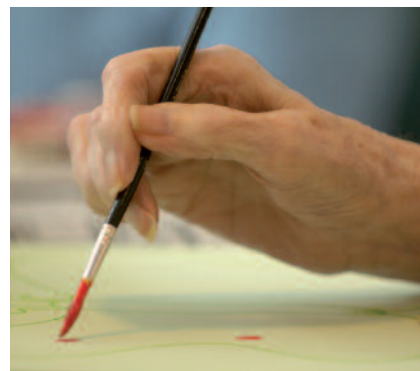
Help is always at hand with our emergency call system. A call bell point is provided in each room so that in an emergency the care staff can come to your aid promptly – 24 hours a day, 365 days a year.

Our external doors are all controlled by an alarm, making the home secure, and our fire alarm is tested every week. We regularly update staff on fire precautions and procedures.

Social Facilities

Swallow Wood has several communal lounges for people to enjoy, as well as beautiful enclosed gardens with a patio area. You'll find these areas very sociable and popular meeting places for residents.

While we always respect your privacy, we have our own Social Care Co-ordinator who organises a complete schedule of activities for you to take part in if you wish. These include painting, crafts, sing-alongs, books on tape, physical fun, games and bingo. Theatre groups, musicians and entertainers visit regularly and we also like to organise social events such as coffee mornings and outings.



Community Facilities

Swallow Wood is situated close to Mexborough town centre. The town lies to the north of the River Don and is a pretty stone-built village, with several chapels and markets. Nearby Rotherham has a number of museums and an art gallery that showcases various exhibitions. Its Civic Theatre and Arts Centre provides plenty of entertainment and there are many places to shop and eat, as well as beautiful parks.

Quality Standards

We operate our own Quality Standards Programme that is constantly audited and monitored to ensure the highest standards in all areas. MHA's services have been independently assessed for quality by the English care sector's regulator, the Care Quality Commission (CQC), and have achieved one of the highest ratings.



Spiritual Well-being

At MHA, we support each older person to live life in the way that they wish, providing opportunities for fulfilment.

We believe that spiritual well-being is achieved by nurturing the human spirit through relationships and positive experiences – be they with God, family and friends, animals, nature, music, art or other creative activities.

In addition to our care staff and many volunteers we have our own Chaplain who is available for pastoral support. Our Chaplain also organises worship services for those who wish to attend and can arrange for contact with other religious ministers in the local area.

Visitors

Friends and family can visit you whenever they wish and are welcome to join you for a meal, for which we charge a modest fee.



Where Are We?

From the east

Take the A1(M), exiting at Junction 36 to join the A630 towards Rotherham. Continue along the A630 High Rd/Sheffield Rd/Doncaster Rd until you reach the traffic light junction (TL) with the A6023 Low Road to Mexborough. Turn right into this road and continue along it as it becomes Doncaster Road.

Keep following the signs for the A6023 to Mexborough at the roundabouts and junctions, and then the A6023 to Barnsley and Wath. The A6023 will eventually become Wath Road. You will pass The Plant pub, a Church and Cambridge Street on the right. Swallow Wood is on the left.

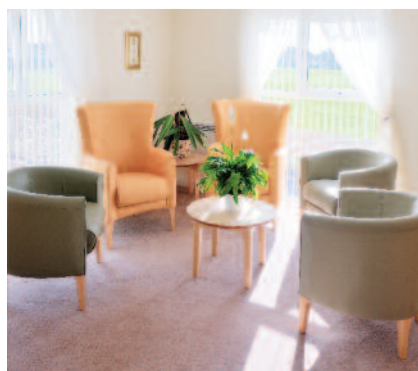
From the west

Take the M1 and exit at Junction 36 on to the A61 towards Barnsley, then take the A6195 Dearne Valley Pkwy towards Doncaster. Continue on the A6195 to Doncaster at all roundabouts. When you reach the roundabout exiting to the A633 Manvers Way towards Wath, take this road (A633 to Rotherham and Manvers).

Stay on this road at all roundabouts until you reach the one that joins the A6023 to Doncaster and Mexborough. At this roundabout, take the second exit to join the A6023 Manvers Way. Stay on this road at all roundabouts. It will eventually become Wath Road. Continue along this road, passing a petrol station on your left. Swallow Wood will be on your right, just after Oxford Street on the left.



Not to scale – shown as a guide only



Interested in finding out more?

Please give us a call on:

01709 571477

We will be delighted to talk to you.

Swallow Wood

Wath Road

Mexborough

South Yorkshire

S64 9RQ

Phone: 01709 571477

Fax: 01709 585505

Email: home.mex@mha.org.uk



housing and care for older people

Head Office

Epworth House Stuart Street Derby DE1 2EQ

Phone: 01332 296200 Fax: 01332 296925

Email: enquiries@mha.org.uk Website: www.mha.org.uk

Methodist Homes (MHA), registered as a Charity - No. 1083995
Company Limited by Guarantee - No. 4043124