

About Willow Court



Homes for
easy living
at Willow Court

Each apartment has the following features

- Spacious lounge
- Fitted kitchen with built in oven and hob and a space for your own washing machine. Tiles and units are colour co-ordinated to be modern and pleasing to the eye.
- Under cupboard lighting
- Fitted and tiled en suite easy access shower room
- 2 good sized bedrooms
- Double glazed large windows to maximise the natural light
- Linked to our 24 hour careline service to allow help to be summoned in an emergency
- TV and telephone points in lounge and main bedroom giving access to digital TV services

There are also a range of other facilities designed to the same high standards as the apartments and include:-

- An elegant and stylish lounge to relax in
- A comfortable bistro restaurant
- An internet cafe/computer suite
- A relaxing bathing suite
- A bright and modern beauty salon offering hairdressing and more
- A friendly shop for essentials
- A warm and comfortable guest suite
- Car parking at the front for residents and visitors
- CCTV cameras for extra peace of mind and security
- Beautiful landscaped private gardens, including highly scented flora, seating areas, gentle water feature and paved paths for a gentle stroll

Enjoy life, enjoy easy living



Enjoy life, enjoy easy living

About Willow Court

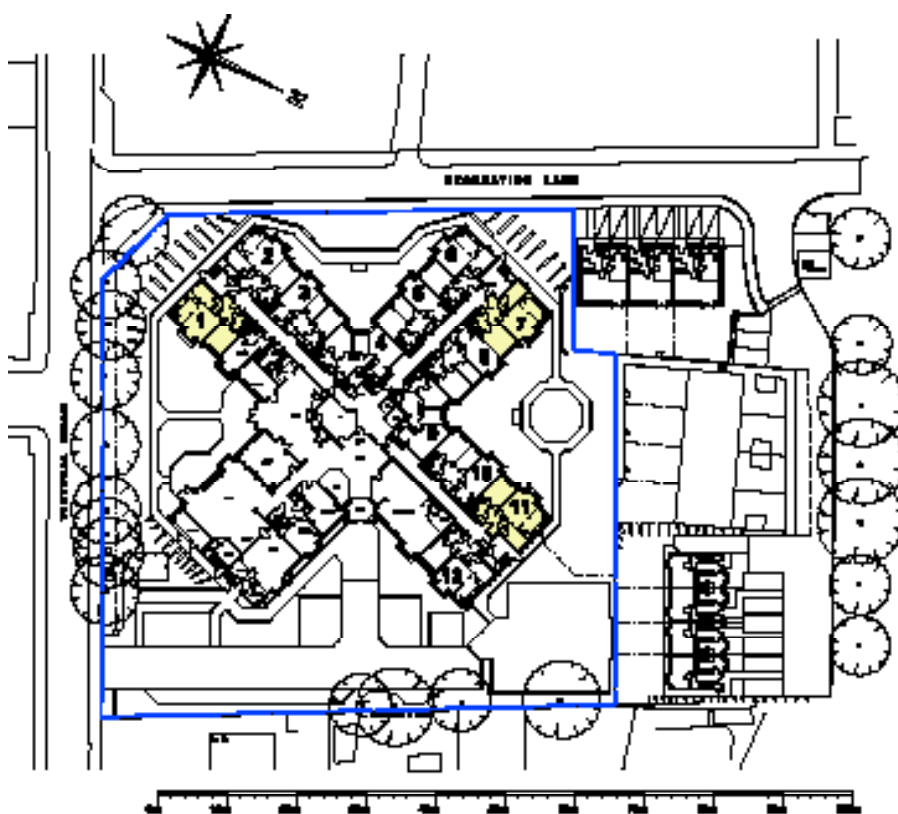


Homes for
easy living
at Willow Court

This stunning and stylish development is made up of 52 easy living, spacious apartments, all two bedrooms, with ensuite shower room to the main bedroom. Of course, the second bedroom can be used flexibly for whatever suits best, as a spare bedroom or study or hobby room.

Ten of the apartments are for sale on a shared ownership basis (part rent/part buy) and the other 42 are for renting.

There are two lifts which give access to all 3 floors.



FOR SALE UNITS

WILLOW COURT
VICTORIA ROAD, ILLAND
SCALE @ A3 1:500



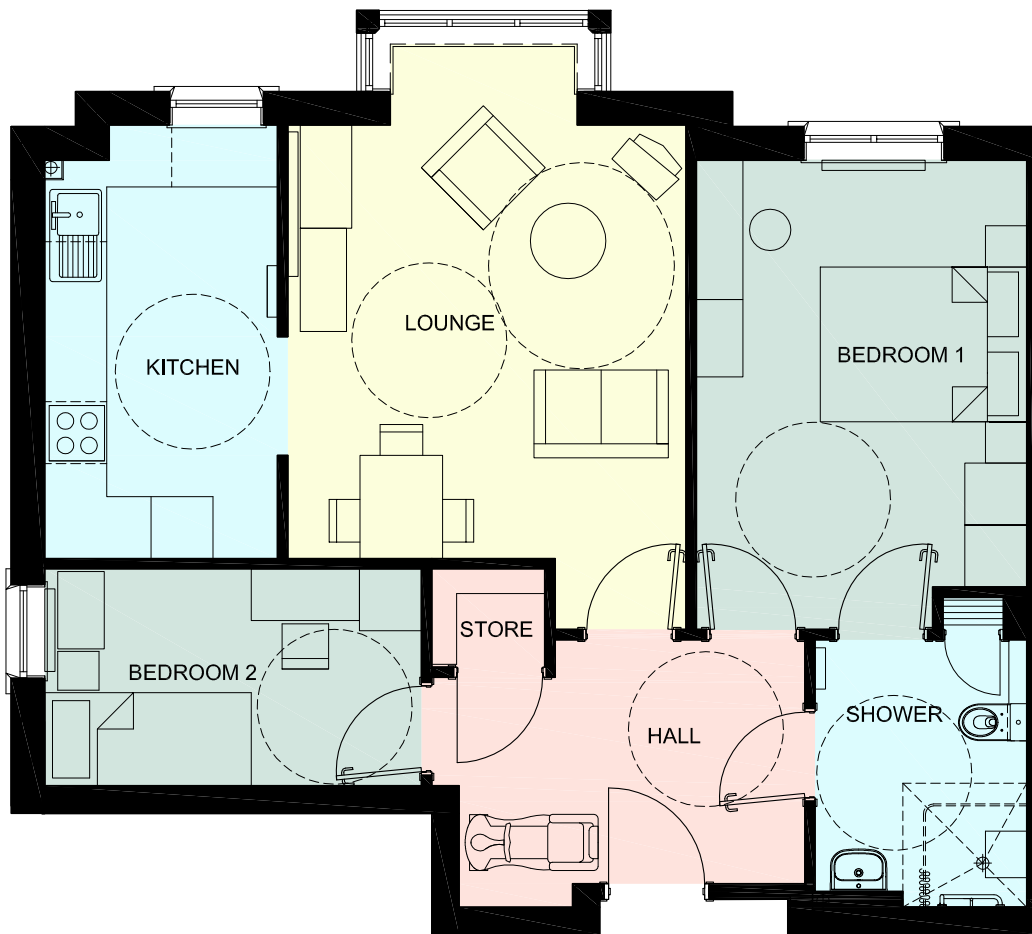
SECOND FLOOR PLAN



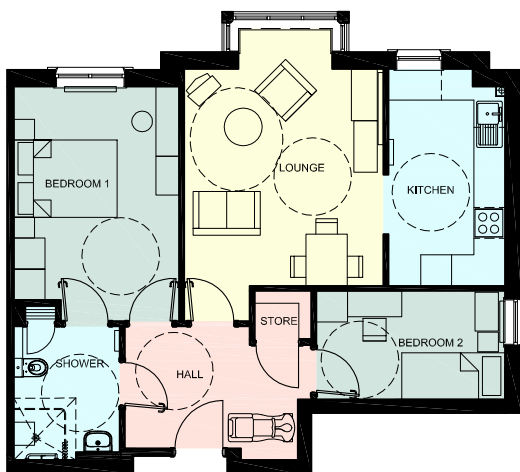
FIRST FLOOR PLAN

Enjoy life, enjoy easy living

Floor layout A



Apartment Type A1 :
2, 7, 12, 15, 20, 25, 30, 35, 40, 45 & 50

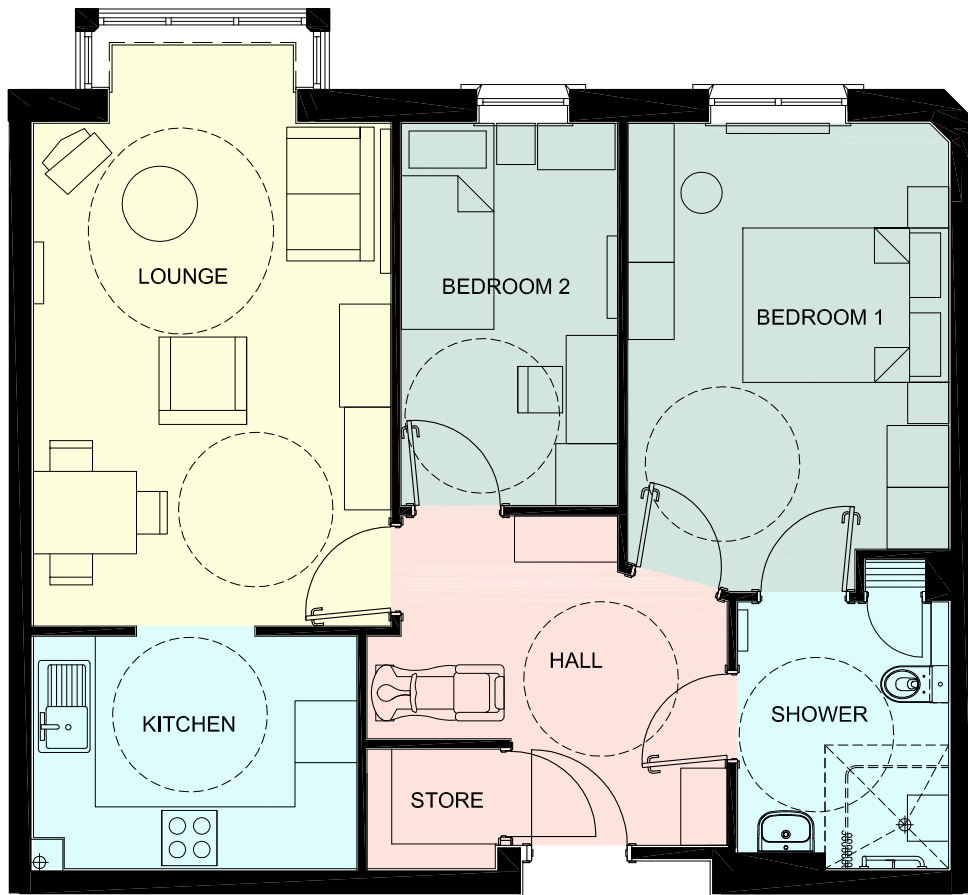


DIMENSIONS (All dims are approximate) :

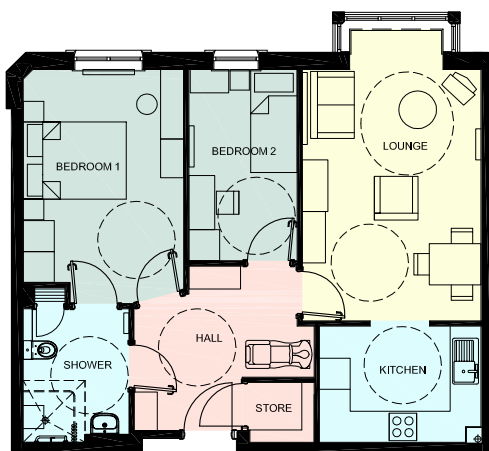
Lounge (excl bay) :	4.2 x 3.87m (13ft 9in x 12ft 8in)
Kitchen :	4.2 x 2.25m (13ft 9in x 7ft 4in)
Bedroom 1 :	4.54 x 3.2m (12ft 10in x 10ft 5in)
Bedroom 2 :	3.63 x 2.1m (11ft 10in x 6ft 10in)
Shower room :	2.5 x 2.05m (8ft 2in x 6ft 8in)
Store :	1.09 x 0.95m (3ft 6in x 3ft 1in)

Apartment Type A2 :
1, 6, 11, 14, 19, 24, 29, 34, 39, 44 & 49

Floor layout B



Apartment Type B1 :
3, 8, 16, 21, 26, 31, 36, 41, 46 & 51



DIMENSIONS (All dims are approximate) :

Lounge (excl bay) : 4.88 x 3.47m (16ft x 11ft 4in)

Kitchen : 3.14 x 2.25m (10ft 3in x 7ft 4in)

Bedroom 1 : 4.54 x 3.11m (12ft 10in x 10ft 2in)

Bedroom 2 : 3.7 x 2.1m (12ft 1in x 6ft 10in)

Shower room : 2.5 x 2.05m (8ft 2in x 6ft 8in)

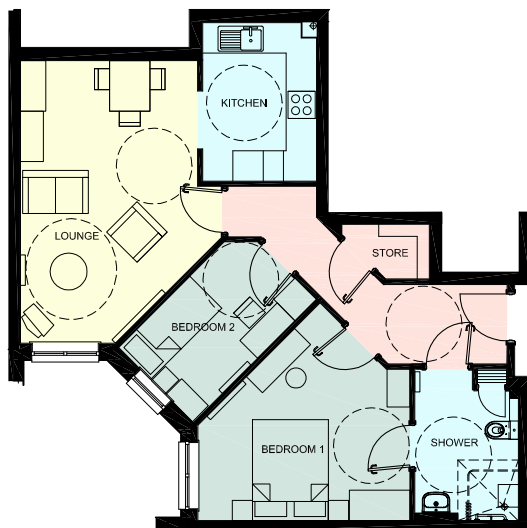
Store : 1.24 x 1.16m (4ft 1in x 3ft 9in)

Apartment Type B2 :
5, 10, 13, 18, 23, 28, 33, 38, 43 & 48

Floor layout C



Apartment Type C1 : 4, 9, 17, 22, 37 & 42



DIMENSIONS (All dims are approximate) :

Lounge	: 5.6 x 3.51m (18ft 4in x 11ft 6in)
Kitchen	: 3.14 x 2.25m (10ft 3in x 7ft 4in)
Bedroom 1 (average)	: 4.2 x 3.0m (13ft 9in x 9ft 10in)
Bedroom 2	: 3.45 x 2.1m (11ft 4in x 6ft 10in)
Shower room	: 2.5 x 2.05m (8ft 2in x 6ft 8in)
Store	: 1.5 x 0.9m (4ft 11in x 3ft)

Apartment Type C2 : 27, 32, 47 & 52