



# CHESTNUT HOUSE

209 ARABELLA DRIVE · LONDON · SW15 5LH



A range of 41 one & two bedroom extra care apartments for rent



Richmond upon Thames  
Churches Housing Trust





# CHESTNUT HOUSE

209 ARABELLA DRIVE · LONDON · SW15 5LH

## a new concept in retirement housing

### CHESTNUT HOUSE EXTRA CARE

Chestnut House, the first purpose-built extra care scheme in Wandsworth, is located at 209 Arabella Drive (just off Upper Richmond Road), Roehampton. It is aimed at older people who need more care and support than is provided in sheltered housing.

Living in extra care housing means that you can remain independent and enjoy the privacy of your own apartment, but with the added reassurance of a staff call system, security entrance system with CCTV and a flexible, individually tailored package of care and support provided on site by staff who are available 24 hours a day.

You can participate in activities with other tenants and the local community as much or as little as you choose.

Chestnut House (opening June 2008) is owned and managed by Richmond upon Thames Churches Housing Trust (RUTCHT – a registered social landlord).

Wandsworth Council is working in partnership with RUTCHT to identify people who need extra care and who would benefit from moving to Chestnut House.



## APARTMENTS & FACILITIES

Chestnut House has 34 one-bedroom and 7 two-bedroom unfurnished apartments for rent from RUTCHT on an assured tenancy. All the apartments are designed for wheelchair use, with fully fitted kitchens (electric oven and hob, fridge freezer, washing machine and microwave included), walk-in showers, carpets and vinyl flooring to wet areas. A guest room, with ensuite facilities is available for visiting family and friends. Some ground floor apartments have a small private patio area.

Pets are allowed, provided that prior written consent from RUTCHT has been obtained.

Communal areas include a garden, lounge, dining room, kitchen, hair dressing room, assisted bathroom and wheelchair room (with wheelchair charging facility). All entrances allow good access for people with mobility difficulties.

## CARE & SUPPORT

At Chestnut House you would have a personalised plan of care and support which will be tailored to help you to live as independently as possible the way you want to. We understand that your health can go up and down, and that is where extra-care can help. By being on site 24 hours a day the care team can step in and help if you become ill, or on days when you feel less well.

We will encourage tenants to live a full and active life and staff will support you to do this, but we respect privacy and understand that everyone is different.

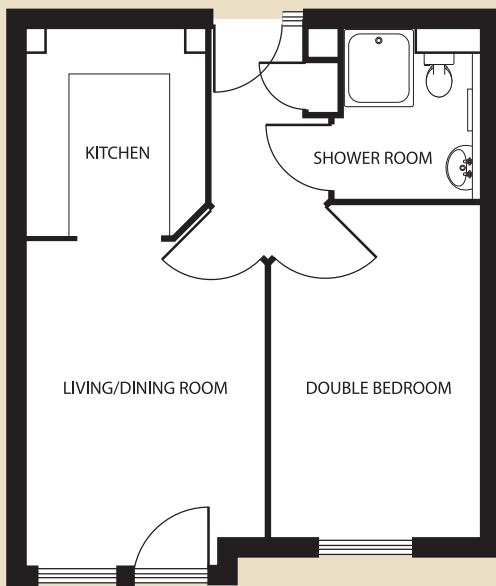
The care and support staff team will be employed by Home from Hospital Ltd (HFH) who have over 20 years experience of working in Wandsworth and specialise in providing high quality care for people living in their own home and promoting independent living through rehabilitation. Staff are fully trained and supervised to enable them to meet your individual needs.

Home from Hospital Ltd is registered with the Commission for Social Care Inspection and is an accredited member of the United Kingdom Home Care Association.

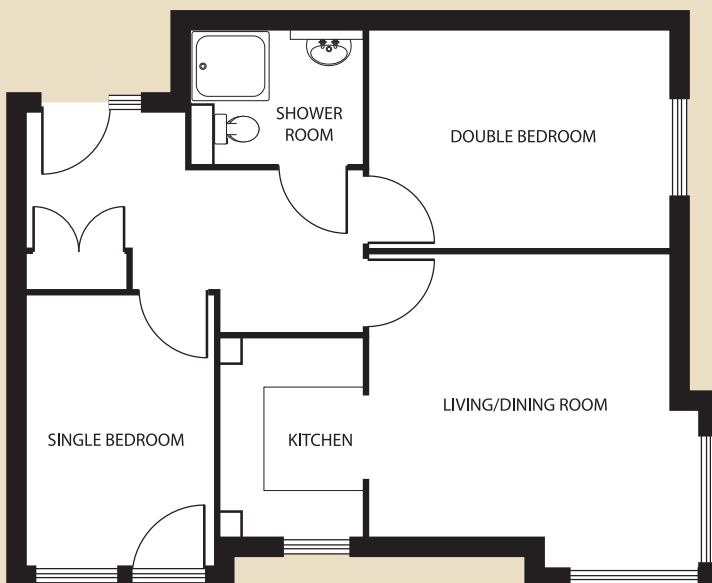


a selection of beautiful and well thought out homes...

TYPICAL ONE BEDROOM APARTMENT



TYPICAL TWO BEDROOM APARTMENT





## GETTING AROUND

Chestnut House is ideally situated off Arabella Drive near to the A205 Upper Richmond Road. The A316 and M3 are also nearby providing easy access to the South West and south coast. The nearest rail station is Barnes which operates daily services to Waterloo and is only three stops from Clapham Junction. Regular bus services operate along Upper Richmond Road to nearby areas. For further information regarding fares and times please contact TFL on 020 7222 1234 or [www.tfl.gov.uk](http://www.tfl.gov.uk).

## HOW MUCH DOES CHESTNUT HOUSE COST?

Detailed information on costs is available separately. Costs are made up of:

- Rent set at an affordable level
- Service charge
- Charges for care and support based on your care package and financial circumstances.

Assistance will be provided with applying for any benefits that you are entitled to receive.

## CAN I BE CONSIDERED?

To be considered for a tenancy at Chestnut House, you and / or your partner must:

- Be aged 55 years or over
- Be assessed by Wandsworth Council's Adult Social Services Department as needing care or support

Priority will be given to Wandsworth residents.

## HOW TO APPLY

If you are interested in renting an apartment (either for yourself or for you and a partner/carer), register your interest now by contacting Wandsworth Council's Housing Department.

**Contact:** (020) 8871 6808 / 6814

**Minicom:** (020) 8871 7555

**Email:** [housingapplications@wandsworth.gov.uk](mailto:housingapplications@wandsworth.gov.uk).

**For further information please contact  
Richmond upon Thames Churches Housing Trust on**

**020 8481 7277**



*Richmond upon Thames  
Churches Housing Trust*

13 Castle Mews, High Street,  
Hampton, Middlesex, TW12 2NN  
Tel: 020 8481 7277 Fax 020 8481 7244  
Email: [info@rutcht.org.uk](mailto:info@rutcht.org.uk)

