

Cliveden
Village



Apartments



Countryside
Properties



THE NATIONAL TRUST

Cliveden Village



Apartment locations

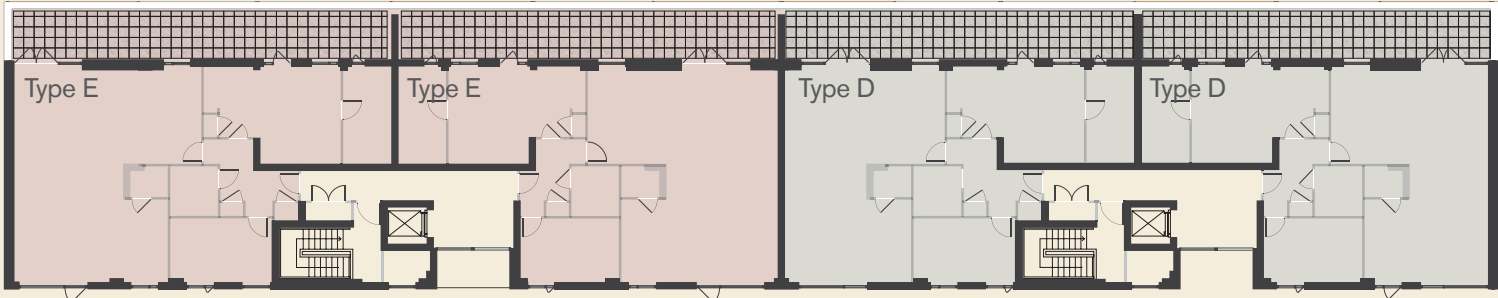
- The Broadleaf Building
- The Roundwood Building
- The Coppice Building
- The Wilding Building

Masterplan Locator

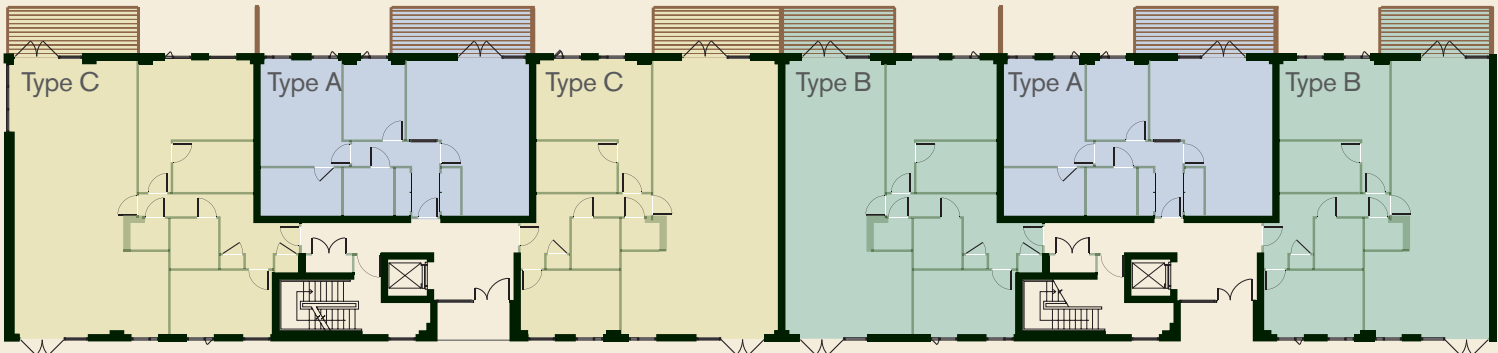


Apartment buildings' floorplates

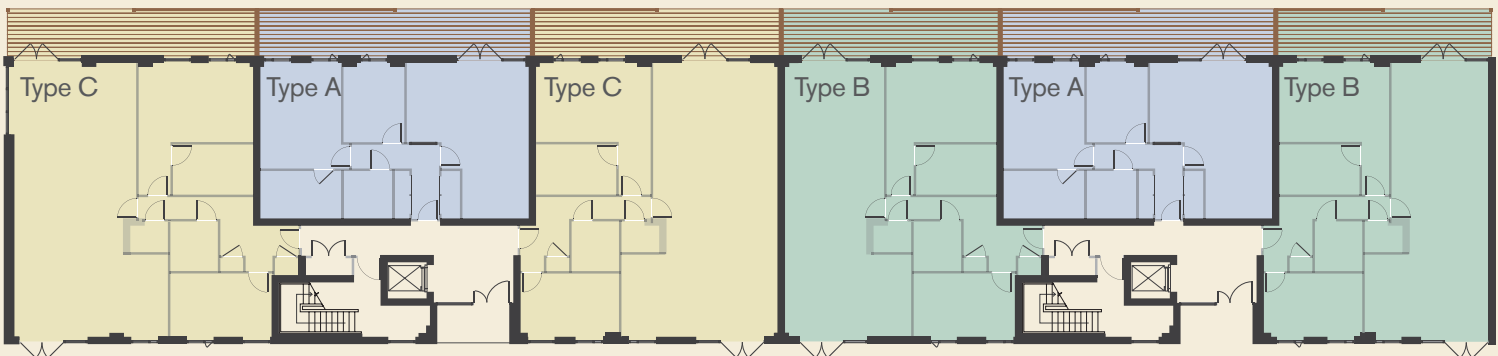
Second floor



First floor



Ground floor

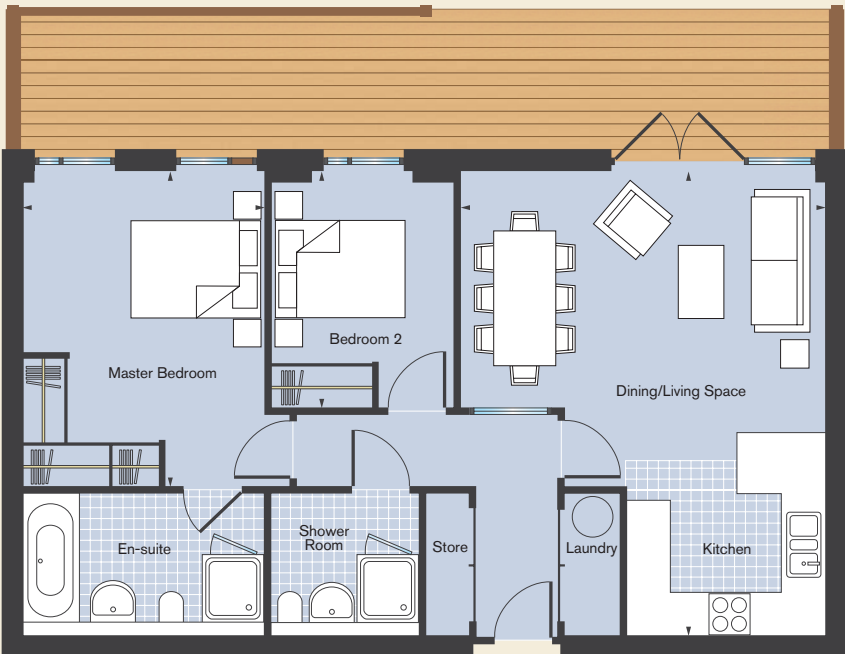
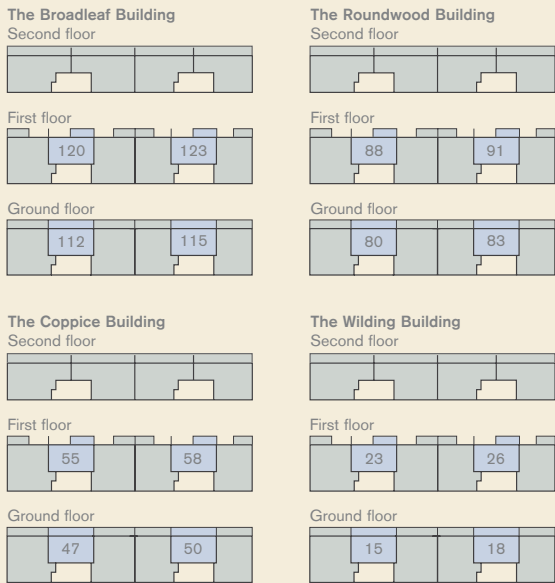




Apartment A

Kitchen and Dining/ Living Space	6.82m x 5.33m (22'5" x 17'6")
Master Bedroom	4.63m x 3.51m (15'2" x 11'6")
Bedroom 2	3.48m x 2.67m (11'5" x 8'9")

Plot Numbers	
The Broadleaf Building	112, 115, 120, 123
The Roundwood Building	80, 83, 88, 91
The Coppice Building	47, 50, 55, 58
The Wilding Building	15, 18, 23, 26



Floorplan, terrace/balcony arrangement and window positions of individual plots vary. All sizes are approximate with maximum dimensions and incorporate fitted wardrobe space. Please ask our Sales Consultants for detailed information regarding specific properties.

Apartment B

Dining/Living Space	12.00m x 4.25m (39'5" x 13'11")
Master Bedroom	4.78m x 3.47m (15'8" x 11'5")
Bedroom 2	4.31m x 2.79m (14'2" x 9'2")

Apartment Locations	
Main floorplan shown:	
The Broadleaf Building	113, 116
The Roundwood Building	81, 84
The Coppice Building	48, 51
The Wilding Building	16, 19

★ Additional store and different location of front door on the following plots:	
The Broadleaf Building	111, 114
The Roundwood Building	79, 82
The Coppice Building	46, 49
The Wilding Building	14, 17

Floorplan, terrace/balcony arrangement and window positions of individual plots vary. All sizes are approximate with maximum dimensions and incorporate fitted wardrobe space. Please ask our Sales Consultants for detailed information regarding specific properties.



Apartment C

Dining/Living Space	12.00m x 5.45m (39'5" x 17'10")
Master Bedroom	5.00m x 3.47m (16'5" x 11'5")
Bedroom 2	4.31m x 2.79m (14'2" x 9'2")

Apartment Locations	
Main floorplan shown:	
The Broadleaf Building	121, 124
The Roundwood Building	89, 92
The Coppice Building	56, 59
The Wilding Building	24, 27

★ Additional store and different location of front door on the following plots:	
The Broadleaf Building	119, 122
The Roundwood Building	87, 90
The Coppice Building	54, 57
The Wilding Building	22, 25

Floorplan, terrace/balcony arrangement and window positions of individual plots vary. All sizes are approximate with maximum dimensions and incorporate fitted wardrobe space. Please ask our Sales Consultants for detailed information regarding specific properties.



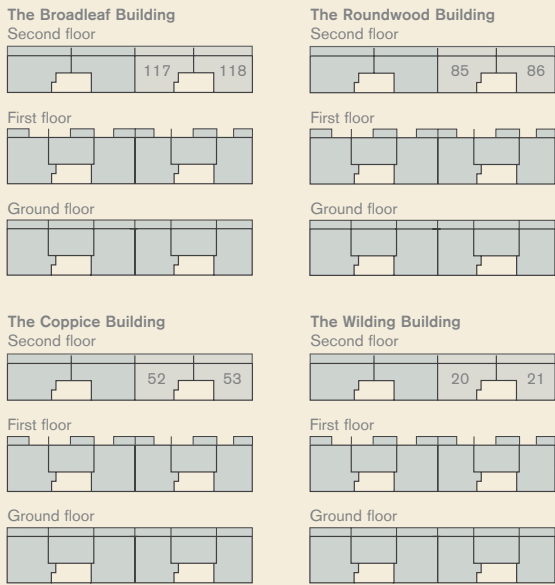
Apartment D

Kitchen/Dining/ Living Space	9.28m x 6.88m (30'5" x 22'7")
Master Bedroom	5.99m x 4.27m (19'8" x 14'0")
Bedroom 2	4.31m x 2.79m (14'2" x 9'2")

Apartment Locations	
Main floorplan shown:	
The Broadleaf Building	118
The Roundwood Building	86
The Coppice Building	53
The Wilding Building	21

* Additional store and different location of front door on the following plots:	
The Broadleaf Building	117
The Roundwood Building	85
The Coppice Building	52
The Wilding Building	20

Floorplan, terrace/balcony arrangement and window positions of individual plots vary. All sizes are approximate with maximum dimensions and incorporate fitted wardrobe space. Please ask our Sales Consultants for detailed information regarding specific properties.

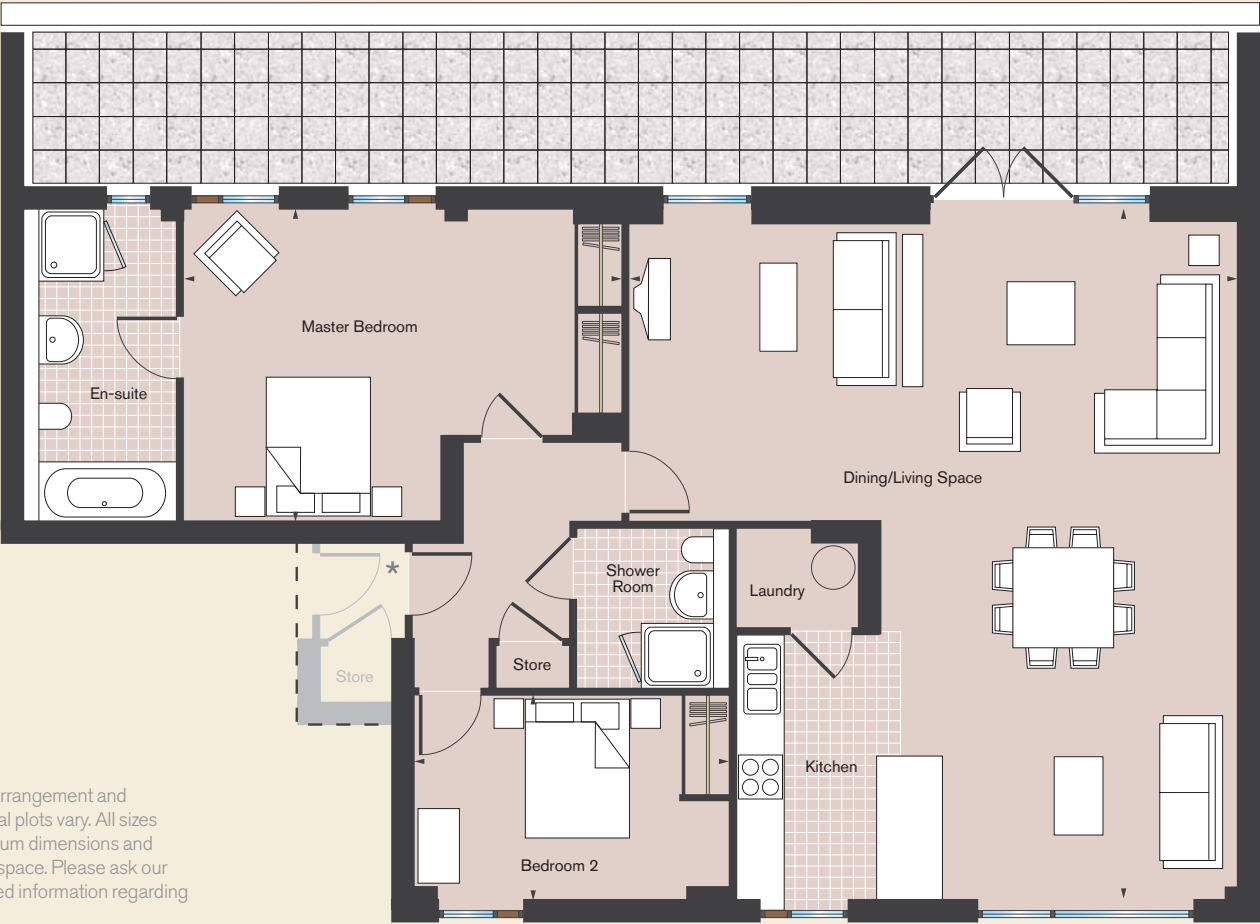
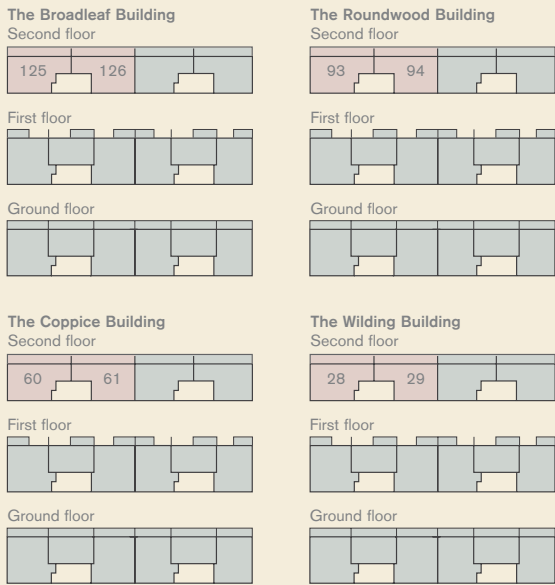


Apartment E

Kitchen/Dining/ Living Space	9.28m x 8.30m (30'5" x 27'3")
Master Bedroom	5.99m x 4.27m (19'8" x 14'0")
Bedroom 2	4.31m x 2.79m (14'2" x 9'2")

Apartment Locations	
Main floorplan shown:	
The Broadleaf Building	126
The Roundwood Building	94
The Coppice Building	61
The Wilding Building	29

* Additional store and different location of front door on the following plots:	
The Broadleaf Building	125
The Roundwood Building	93
The Coppice Building	60
The Wilding Building	28



Floorplan, terrace/balcony arrangement and window positions of individual plots vary. All sizes are approximate with maximum dimensions and incorporate fitted wardrobe space. Please ask our Sales Consultants for detailed information regarding specific properties.

Countryside Properties PLC pursues a policy of continuous improvement. Whilst every effort has been made to ensure that this information is correct, it is intended as a guide and the company reserves the right to alter the specification as necessary without prior notice. This does not constitute or form any part of a contract of sale.

