

Cliveden
Village



Houses



Countryside
Properties



THE NATIONAL TRUST

Cliveden Village



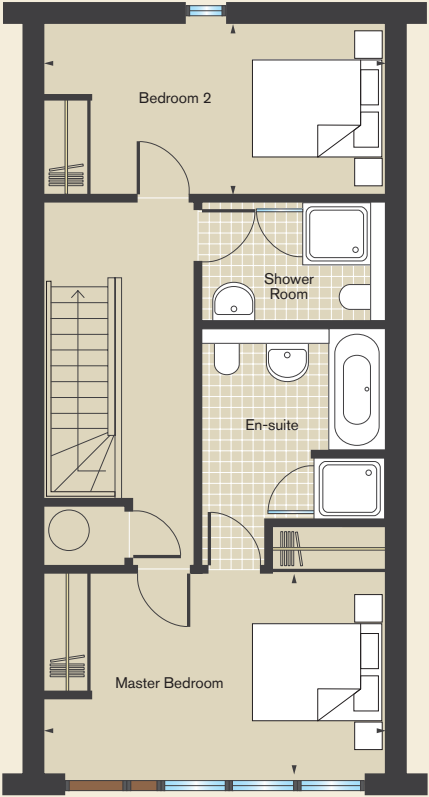
Hawthorn

2 Bedroom House

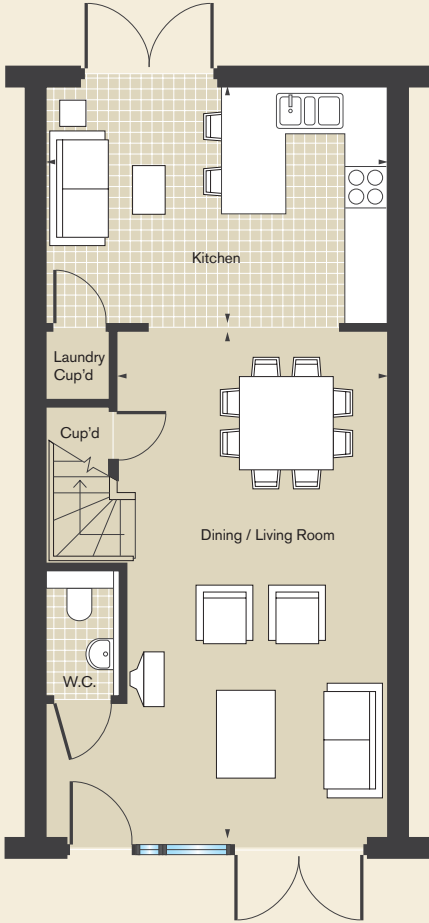
Kitchen	4.94m x 3.40m (16'2" x 11'2")
Dining/Living Room	7.35m x 3.94m (24'1" x 12'11")
Master Bedroom	4.94m x 2.92m (16'2" x 9'7")
Bedroom 2	4.94m x 2.48m (16'2" x 8'1")

Plot numbers	8-13
--------------	------

First Floor



Ground Floor



The floor plan of individual plots may vary from those illustrated. All sizes are approximate with maximum dimensions. Please ask our Sales Consultants for detailed information regarding specific properties.



Type K

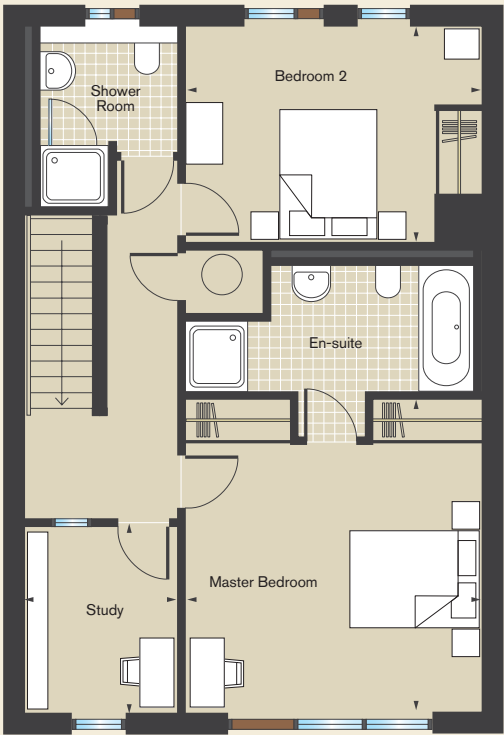
Cambium

2 Bedroom House

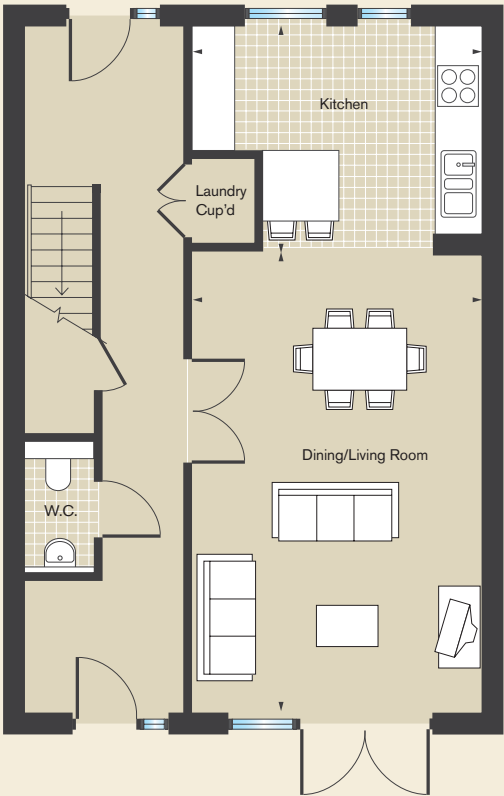
Kitchen	4.19m x 3.31m (13'9" x 10'10")
Dining/Living Room	6.69m x 4.19m (21'11" x 13'9")
Master Bedroom	4.54m x 4.29m (14'11" x 14'1")
Bedroom 2	4.29m x 3.13m (14'1" x 10'3")
Study	2.69m x 2.21m (8'10" x 7'3")

Plot numbers	2-6, 31-35, 63-68, 96-100
--------------	---------------------------

First Floor



Ground Floor



The floor plan of individual plots may vary from those illustrated. All sizes are approximate with maximum dimensions. Please ask our Sales Consultants for detailed information regarding specific properties.



Type A

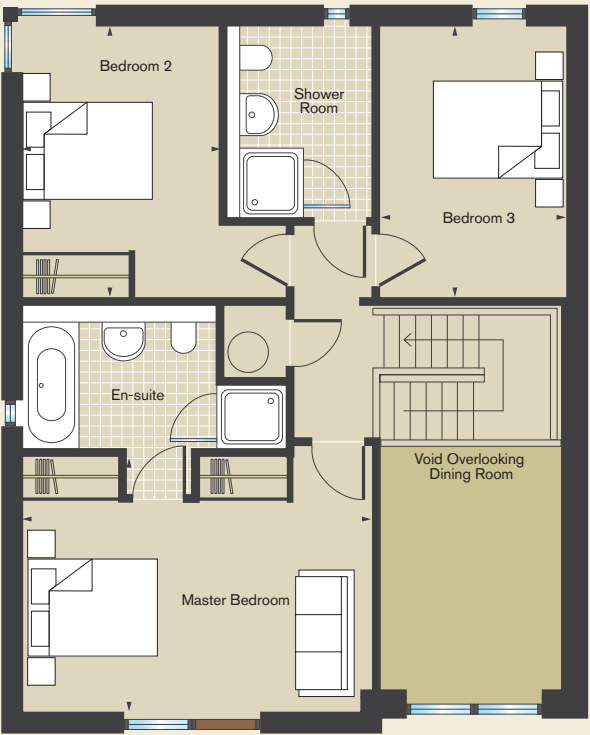
Alder

3 Bedroom House

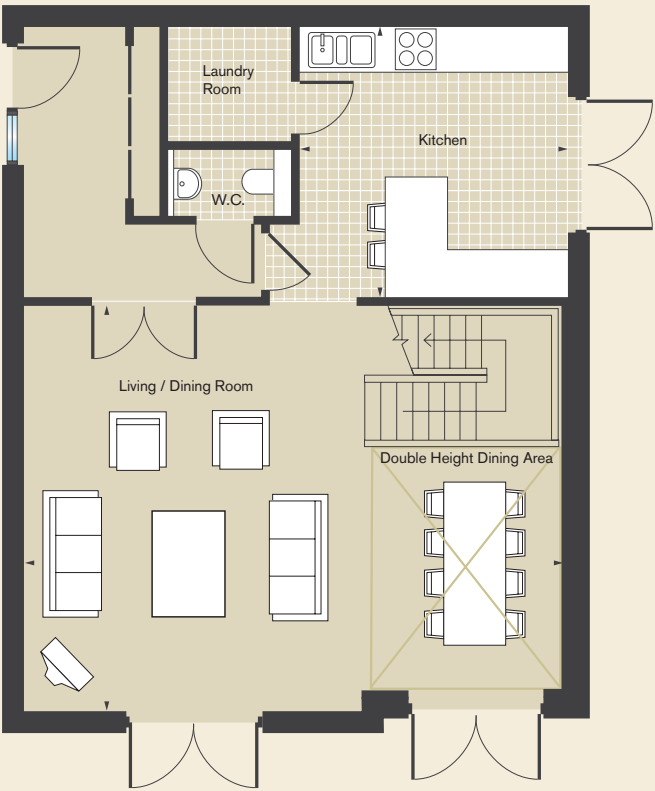
Kitchen	3.90m x 3.89m (12'10" x 12'9")
Living/Dining Room	7.80m x 5.90m (25'7" x 19'4")
Master Bedroom	5.09m x 3.71m (16'8" x 12'2")
Bedroom 2	3.25m x 2.84m (10'8" x 9'4")
Bedroom 3	3.90m x 2.68m (12'10" x 8'9")

Plot numbers	1, 45, 78, 110, 127
--------------	---------------------

First Floor



Ground Floor



Type E

The floor plan of individual plots may vary from those illustrated. All sizes are approximate with maximum dimensions. Please ask our Sales Consultants for detailed information regarding specific properties.

Larch

3 Bedroom House

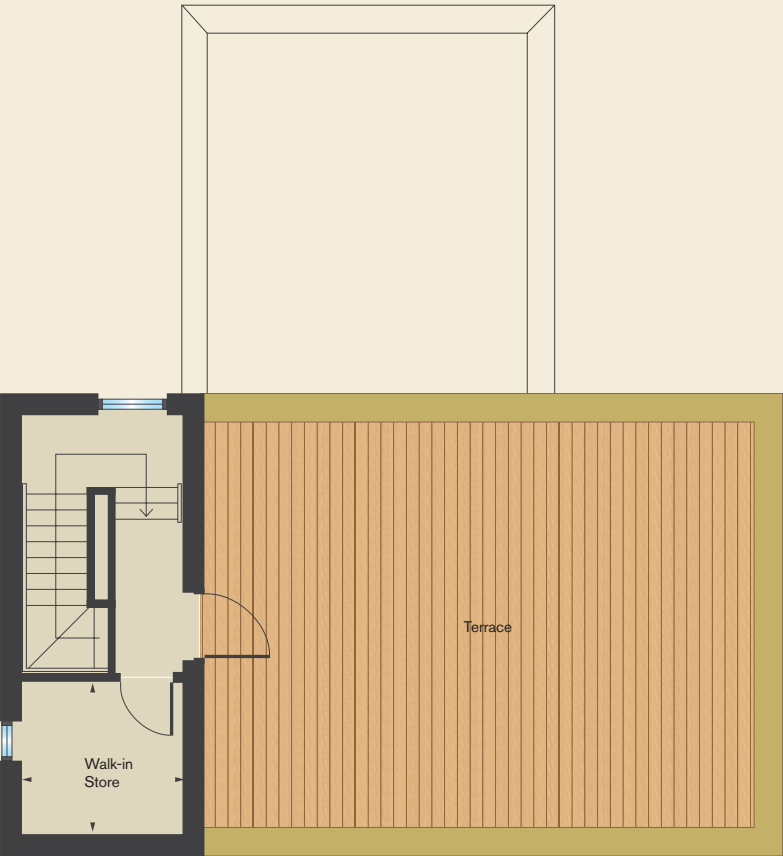
Kitchen/Dining Room	5.98m x 3.85m (19'8" x 12'8")
Living Room	5.98m x 4.03m (19'8" x 13'3")
Master Bedroom	4.71m x 2.68m (15'6" x 8'10")
Bedroom 2	4.24m x 3.28m (13'11" x 10'9")
Bedroom 3	3.77m x 2.58m (12'4" x 8'6")
Study	2.48m x 2.18m (8'2" x 7'2")
Walk-in Store	2.34m x 2.18m (7'8" x 7'2")

Plot numbers	7, 36, 69, 101, 132
--------------	---------------------

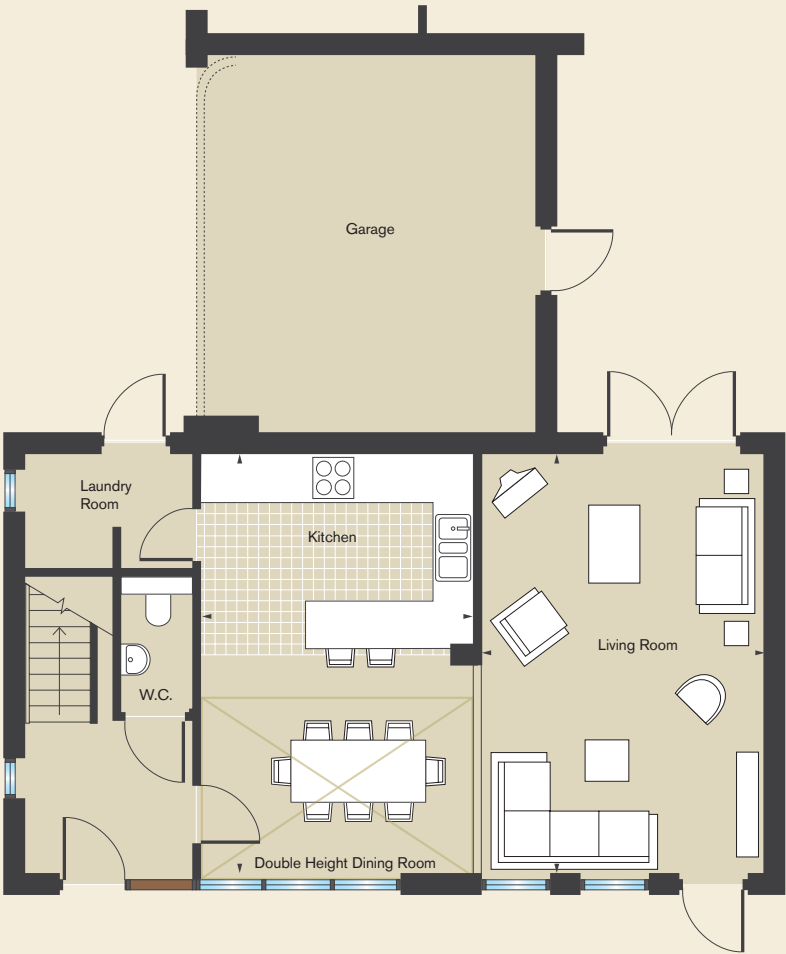


Type G

Second Floor



Ground Floor



First Floor



The floor plan of individual plots may vary from those illustrated. All sizes are approximate with maximum dimensions. Please ask our Sales Consultants for detailed information regarding specific properties.

Countryside Properties PLC pursues a policy of continuous improvement. Whilst every effort has been made to ensure that this information is correct, it is intended as a guide and the company reserves the right to alter the specification as necessary without prior notice. This does not constitute or form any part of a contract of sale.



Countryside
Properties



THE NATIONAL TRUST