

## Site Plan



## Gatchell Oaks Trull, Taunton, Somerset



Typical Kitchen Layout



Typical Bathroom Layout

Contact Knightstone Housing Association Ltd for more information regarding the development and availability on

**0845 8504505 or email  
homes@knightstone.co.uk**

To be eligible for these properties you must live or work within Taunton Deane and be registered with the Homebuy Agent Home2Own 0800 975 1915 ([www.home2own.org.uk](http://www.home2own.org.uk))

Knightstone Housing Association is delighted to offer one x 1 bed apartment and two x 2 bed apartments for sale through New Build Homebuy (part buy / part rent).

Set in the 3½ acres of grounds surrounding Gatchell House, the properties form part of the Gatchell Oaks development recently designed and constructed to create secure and independent accommodation for people aged 55 and over.

Gatchell Oaks is situated close to the centre of the popular and picturesque village of Trull.

Trull has good communication links and is approximately 1½ miles from Taunton, which has a full range of shopping and leisure facilities as well as being close to Junction 25 of the M5.

## Prices

Plot	Property Details	Full Value *	50% Share *	Rent *	Admin Fee	Service Charge Including Ground Rent *	Total Monthly Charge *
SC13	27 Stable Court 2 Bedroom Ground Floor Apartment	£185,000	£92,500	£134.90	£12.17	£145.17	£292.24
SC14	30 Stable Court 2 Bedroom First Floor Apartment	£185,000	£92,500	£134.90	£12.17	£145.17	£292.24
SC20	11 Stable Court 1 Bedroom First Floor Apartment	£160,000	£80,000	£116.67	£12.17	£129.50	£258.34

\*The price and monthly charge amount may change.

## Specifications and Features

### Comfort and Security

- Smoke detector
- UPVC double glazed windows
- Gas central heating
- Carpets throughout
- 10 Year NHBC certificate
- Designated parking space
- Communal gardens

### Kitchen / Diner

- Built in oven with gas hob and extractor hob
- Dishwasher
- Fitted Washer/Dryer
- Fully fitted kitchen
- Vinyl floor covering

### Other features

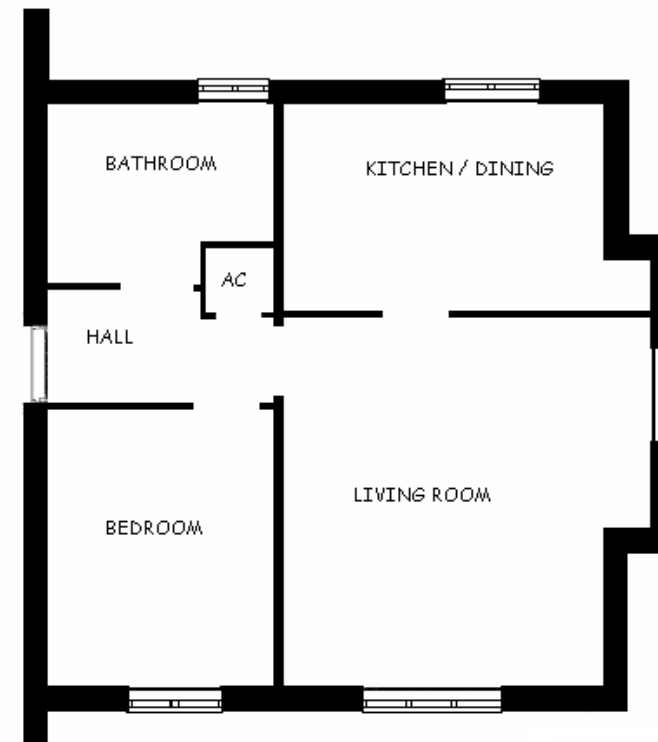
- Door entry system
- Communal lift
- Basement storage room
- 24 hour emergency call
- On site House Manager
- Communal facilities such as a library, treatment room and sitting room are all located within Gatchell House

### Bathroom

- White bathroom suite
- Bath with electric shower
- Tiled Bath / Shower
- Vinyl floor covering
- Heated Towel Rail
- Mirrored Bathroom Cabinet



## Floor Plans



Floor layout of 11 Stable Court



Floor layout of 27 Stable Court

Please note that these are general indications of layouts and actual property layouts may differ.

Important note Misrepresentation Act 1967. Property Misdescriptions Act 1991. These particulars are intended as a guide only and do not constitute any part of an offer or contract. While particulars are prepared in good faith, no responsibility is accepted as to their accuracy or for any error, omission or mis-statement made by Knightstone Housing Association, people in their employment or their agents whether in the course of negotiation in these particulars or otherwise.