



Audley St Elphin's Park

LUXURY RETIREMENT VILLAGE





What makes Audley St Elphin's Park special

Set within 14 acres of landscaped grounds in the beautiful Derbyshire Dales, St Elphin's Park offers the best of the East Midlands – from the Peak District National Park to some of the UK's most vibrant cities.

Featuring more than 100 cottages and apartments, the Village mimics a traditional Derbyshire hamlet. At its heart is the stunning Victorian Gothic St Elphin's House, within which eight individually designed apartments boast historical charm. Originally a private residence, before becoming an exclusive spa and then a prestigious girls' school, St Elphin's House has

been restored stone by stone and transformed into a welcoming home once more, complete with a luxury health club, swimming pool, sauna, restaurant, bar and bistro.

Tucked away in peaceful Darley Dale, Derbyshire's county town of Matlock is just five minutes down the road. The famous Bakewell – known for its delicious pudding of the same name – is only 15 minutes in the other direction. Despite being surrounded by scenic countryside, at Audley St Elphin's Park you're only a 20-minute drive to Chesterfield, 45 minutes to Derby, or 55 minutes to Nottingham or Sheffield – and all the arts, culture, dining and shopping they have to offer.



It can only be Audley.



Audley Health & Wellness

At Audley, living well and staying well is our number one priority, which is why when you move to one of our retirement villages, you automatically become a member of the Audley Club.

Health & fitness

Enjoy a refreshing dip in the indoor swimming pool, soothe tired muscles in the sauna or try a new exercise class in the fitness studio.

Living well

Our vast library is the ultimate sanctuary when you're seeking some peace and reflection.

Extra benefits

We also have a range of benefits that are available for all Audley owners at an additional cost, such as:

Spa therapies

Hair salon

Exquisite dining in the restaurant, bar and bistro

Unwind in the bar and lounge

Luxury guest suites



Audley Cares

At Audley Care, our holistic approach means we offer a wide range of support to suit your needs, as little or often as required. Whether that's helping you get out and about or lending a hand at home, our team is passionate about providing lifestyle support that helps you live life your way.

By your side

Our companionship services ensure there's always someone to chat to when you need it.

Tailored support

Your lifestyle professional will complete a Health and Wellness assessment to determine how we can best support you.

Pride in your home

Fresh sheets and spotless floors, we will keep your home clean and tidy.

Lifestyle & nutrition

Your lifestyle professional can help prepare meals for you and monitor your nutritional needs.

Personal care

We can attend to personal care in a respectful, sensitive manner.

Out of hours care

You can choose from a range of extended care services such as night care.

Properties designed with you in mind

The curation of each Audley property has been informed by decades of experience and commitment to the wellness of our owners. Our luxury properties feature spacious rooms, wide corridors, ample areas to entertain and carefully considered storage solutions. Our expert interior designers have created spaces that inspire and support our owners.

Our attention to detail is unparalleled

Every fixture and fitting in an Audley St Elphin's Park apartment or cottage has been considered to look beautiful, feel comfortable and provide a safe and relaxing living space.

The simple way to sell your home

Moving home can be stressful, particularly if you need to sell your current property first. Audley's specialist partners can remove the uncertainty. They act as cash buyers and will purchase your existing property with no fees or chain to worry about.

Ensuring a stress-free move

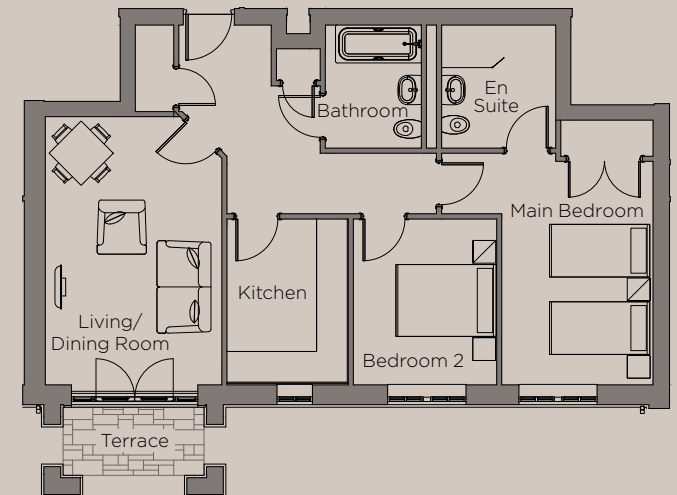
In order to make your move as stress-free as possible, our specialist partners can help streamline the process. We offer a range of emotional and practical support services including Home Buying Service, Downsizing and De-cluttering advice, Bridging options and removals.



Example apartment floor plan

St Elphin's Park boasts a range of apartments and cottages to suit a variety of needs, please contact us for information on availability.

Plans are for illustration purposes only. Furniture shown to indicate possible room layouts and not included in sale.



OUR OTHER AUDLEY VILLAGES

Binswood, Royal
Leamington Spa,
Warwickshire

Chalfont Dene,
Chalfont St Peter,
Buckinghamshire

Clevedon,
Ilkley, Yorkshire

Cooper's Hill,
Englefield Green, Surrey

Ellerslie, Malvern,
Worcestershire

Fairmile,
Cobham, Surrey

Inglewood, Kintbury,
Berkshire

Mote House,
Bearsted, Kent

Nightingale Place,
Clapham, London

Redwood,
Failand, Bristol

Scarcroft Park,
Leeds, West Yorkshire

Shiplake Meadows,
Henley-on-Thames,
Oxfordshire

Stanbridge Earls,
Romsey, Hampshire

St George's Place,
Edgbaston, Birmingham

Sunningdale Park,
Ascot, Berkshire

Willicombe Park, Royal
Tunbridge Wells, Kent

Wycliffe Park,
Horsleys Green,
Buckinghamshire

COMING UP

Headley Court,
Epsom, Surrey

Lingfield Grange,
Lingfield, Surrey

01629 363 389

**stelphinnssales@
audleyvillages.co.uk**

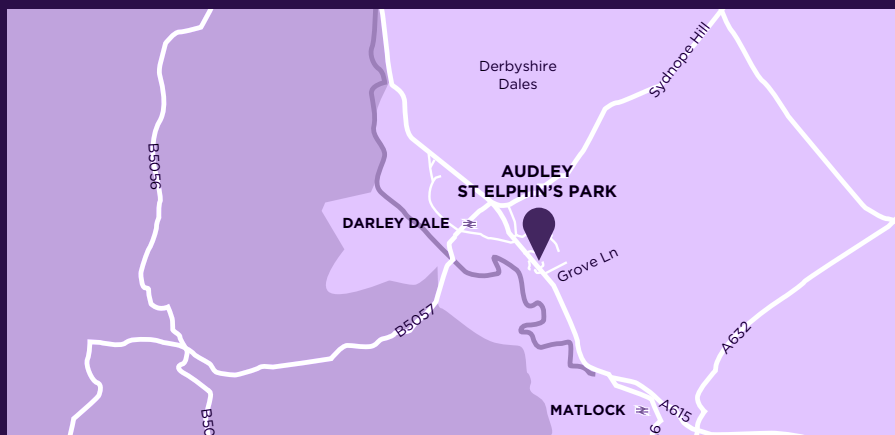
audleyvillages.co.uk/stel

Audley St Elphin's
Park, Dale Road South,
Darley Dale, Matlock,
Derbyshire DE4 2RH



Scan the QR code to
watch our village videos
and discover more about
life at Audley.

Property images
featured in this brochure
are from a variety of Audley
Villages. All images for
illustration purposes only.
All information correct
at time of production.



Audley Court Ltd, Registered in England and Wales. Company
number 05160167. 65 High Street, Egham, Surrey TW20 9EY