



Transforming **lives**
Revitalising **neighbourhoods**



English Churches Housing Group (ECHG) is a multi-award winning provider of housing and support for older people and single homeless people. Since joining the Riverside Group ECHG is now the Group's leading sheltered and supported specialist provider, working in over 170 local authorities.

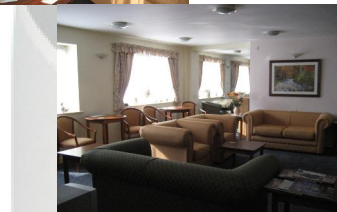
The Orchards 'sheltered housing' was converted in 1998. We have 21 double flats and 1 single flat within the 'Scheme'. Tenant's ages range from 55 to 99 at present.

Ideally situated, The Orchards is located close to Liverpool road which is a direct route connecting Southport and Liverpool

The Orchards is easily accessible to all local amenities. A good shopping area with a local library, post office, chemist, doctors, supermarket and excellent bus, train and taxi service, everything you need on your door step.

Within the scheme it self there is a lot to offer. There is a communal lounge and kitchen, which is an extension of your own 'private flat' if you wish to use it.

Also a communal laundry with washing machines and dryers.



The Orchards

www.riverside.org.uk
0845 111 0000
info@riverside.org.uk

 **Riverside**
echg



Transforming lives
Revitalising **neighbourhoods**



We have a local hairdresser on site 2-3 times a week

A Twin bedded Guest Room with a shower and use of an adjoining bathroom for those relatives or friends that may wish to stay over when visiting.

For Security and peace of mind we provide a part time Scheme Manager, 24 hour CCTV system and 24 hour support from Eldercare.

We also have the added benefit of an attached day centre to join them for lunch or take part in their activities

Social activities within the scheme such as, Coffee Morning, Tea and toast and even outings these are optional, it's up to you.

For further details or why not pay a visit contact the Scheme Manager for an appointment on 01704 527 125

The Orchards
Orchard Lane
Ainsdale
Merseyside
PR8 3QJ
01704 572 125

www.echg.org.uk

The Orchards

www.riverside.org.uk
0845 111 0000
info@riverside.org.uk

 **Riverside
echg**