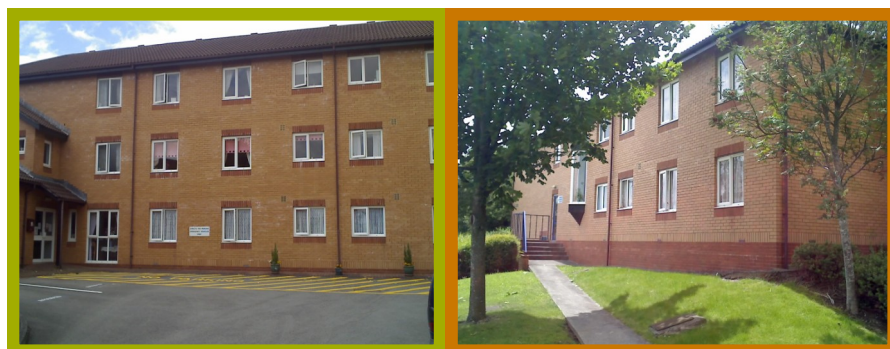


Ty Canol



Overview

Located on the outskirts of Cwmbran, Ty Canol Court is a sheltered housing scheme with 25 one bedroom flats and 6 bungalows. Located on a bus route and within easy reach of all local amenities, there is also a 'dial a ride' service operated by Torfaen Community transport. There are 4 doctors' surgeries, a dentist, optician, post office and shops all in close proximity to the scheme. There is also a prescription delivery service.

There is a Scheme Manager on site Mon-Fri, 37 hours per week, which are flexible, to ensure the building is maintained and to provide support to tenants to maintain their independence and manage their tenancies. Outside of these hours there is a 24 hour alarm system connected to a Control Centre.

The scheme has a communal lounge, kitchen, guest bedroom, and laundry room. The scheme has 2 inner patio areas where tenants can place plants, shrubs and pots of flowers. The scheme also stands in its own landscaped grounds which are maintained by the Association.

There is a CCTV door entry system which is linked to tenants own televisions in their flats and each flat is fitted to receive Sky TV.

Activities

- Gardening
- Bingo
- Coffee Mornings

- Concerts
- Quiz Nights
- Regular Day Trips

Facilities

- Communal lounge
- Communal kitchen
- Communal laundry
- Guest bedroom
- Landscaped grounds
- Sky TV
- CCTV door entry
- 'Dial a ride' transport for disabled tenants

Services

- Support of the Scheme Manager
- Link to Emergency Control Centre 24 hours

For more information contact: Pauline Furley

By email: Pauline.Furley@Linc-Cymru.co.uk

By telephone - 01633 866616

Website www.linc-cymru.co.uk