

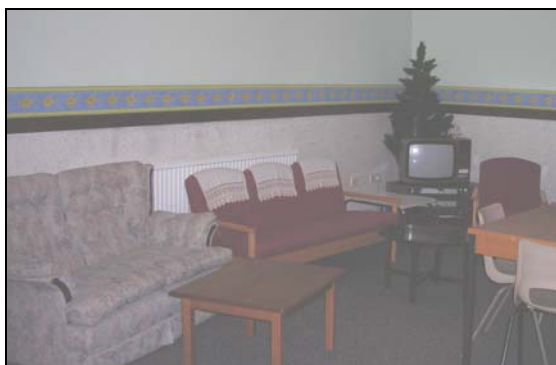
Gardner House
Trinity Close
Park South
Swindon
SN3 2EE



Scheme Warden: Deon Louw
Scheme Telephone Number: 01793 641060
Scheme Supervisor: Brenda Muir-Southall
Telephone Number: 01793 464432

Gardner House is one of 3 Swindon Borough Council sheltered schemes located in the Park South area of the town. It contains 46 one bedroom flats and 14 bungalows which are external to the scheme.

The scheme is complemented by a rear courtyard garden with seating and a gazebo, a large communal lounge and hobby room. The scheme benefits from a communal laundry and a guest bed-sit is available at the scheme for family and friends who want to visit a tenant living in Gardner House, at a cost of £8.00 per night. The scheme also benefits from a communal door entry system, and single point CCTV at the front door of the scheme which tenants can view before letting visitors into the building.



All flats and bungalows have the support of a warden call system. Calls for support are answered by the resident warden when onsite or on duty and by Homeline, Swindon Borough Council's community alarm service outside of these hours.

All of our sheltered schemes benefit from a communal satellite dish, which gives tenants compatibility to view satellite television without the need for their own dish and a communal digital television aerial, which allows tenants to receive a digital television signal.

Gardner House is located just off of Cranmore Avenue and is on Thamesdown bus route 15. Buses run approximately every 20 minutes between 6am and 11pm to the town centre. Buses 20 and 21 run every half an hour between 6.30am and 7pm to the Great Western Hospital. Buses run less frequently on a Sunday.

The nearest Doctors Surgery is approx 70 metres away at Priory Road. Shops are 60 metres away at Cavendish Square and include a Post Office, supermarkets, chemist and newsagent.

Social events in the scheme include games evenings, coffee mornings, afternoon tea, bingo in the summer, there is a barbeque once a month and the tenants arrange various outings and entertainment that comes into the scheme. The Anglican and Evangelical Church visit the scheme once a month.

Scheme amenities		Amenities around scheme	
Communal Lounge	YES	Local Shops	YES
Communal Laundry	YES	Doctors Surgery	YES
Guest Flat	YES	Local Post Office	YES
Enclosed Garden	YES	Main Route Bus Service	YES
Disabled access toilet	YES		
Disabled access shower room	YES		
Single Point CCTV	YES		
Library Service visits once a fortnight	YES		
Hobby Room	YES		
Communal Satellite Dish	YES		
Communal Digital Aerial	YES		