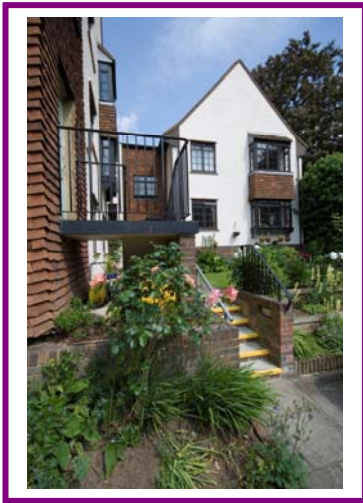




**Providing Retirement & Care Housing In Surrey**



Part of Affinity Sutton



## *Eleanor Court*

Eleanor Court is situated in the heart of Guildford with superb views of the nearby castle ruins. The local area provides easy walking access to a vast array of amenities including GP surgeries, dentists, opticians, post office, shops and the bus and train stations.

Guildford offers a huge variety of attractions including the remains of a Norman Castle, a stunning Cathedral and the Guildford Museum, home to local history and memorabilia.

The scheme has 10 homes specifically designed for older people.

The scheme is set out over 2 floors with stairs leading to the first floor accommodation. All of the properties are one-bedroom flats and have a separate kitchen, bathroom and lounge.

All of the flats have electric night storage heating and are fully double glazed.

The flats and studio flats are linked by an intercom system via a pull cord in each room, to the Scheme Manager when on duty, or to our supporting control centre out of hours.

Residents are secure in the knowledge that there is always someone available to offer support in an emergency 24 hours a day, 7 days a week.

All homes are fitted with individual smoke detectors.

### **Facilities**

Security door entry to the main front door that can be operated from each flat.

Communal grounds.

Resident parking.

Regular trips and social functions are arranged jointly with the residents of The Willows, our neighbouring scheme.

The services of agencies such as Age Concern and the WRVS are available locally and can be contacted for you by the scheme manager on request.

Dial-a-Ride provide an excellent service to many local day centres.

### **Location**

Eleanor Court is situated in the centre of Guildford and therefore only a short stroll away from every imaginable amenity that may be required. The bus and train stations are located nearby and offer easy access to the surrounding towns and villages as well as central London.

### **Who can apply?**

Eleanor Court has been specifically designed for older people or those with disabilities, who live locally and are in need of some support. The scheme offers an opportunity for independent living in a safe, comfortable and secure environment.

Applications should be made to Guildford Borough Council, unless you are currently a tenant of Downland Housing Association.

### **Contact us**

**To find out more or to arrange a visit, please contact the Scheme Manager on 01483 503613 or our Customer Service Team on 0845 688 7717**



**Eleanor Court  
Castle Street  
Guildford  
Surrey  
GU1 3XD**

**T: 01483 503613**