

Sheltered Housing Scheme

Fairhouse Court



One of the courtyard communal gardens

- ♦ Fairhouse Court is a complex of ground and first floor flats arranged around a central courtyard. The scheme can be found in Long Riding
- ♦ The Local Area (Central) Housing Office is located on the ground floor of the Basildon Centre in the Town Centre (01268) 294500

- ♦ The Sheltered Scheme Co-ordinator can be contacted on (01268) 521992
- ♦ The nearest shops are $\frac{3}{4}$ mile from the Complex and include a Co-op convenience store. The nearest Post Office is 700yards away at the junction of Timberlog Lane and Long Riding as are a pharmacy, bakery and convenience store
- ♦ The nearest Doctors Surgery is in Long Riding 500yds away, whilst the nearest Dental practice is approximately 600yards from the complex in Whitmore Way
- ♦ First National buses stop outside the complex in Long Riding, the No. 8 service operates a circular route, which takes in the Town Centre, Tesco Pitsea and the bus and rail stations

Useful telephone numbers

Applications/Allocations - 01268 294099 Benefit Agency - 01268 363000
Supported Housing Officers - 01268 465026

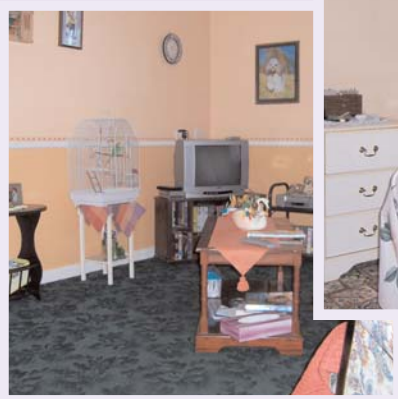
Fairhouse Court



The Common Room

- ♦ Fairhouse Court has a Common Room for use by the tenants and offers a wide range of activities including: - Wine Group and Bingo on Mon, Singers on Tues, and fortnightly coffee mornings

- ♦ Individual flats at the Fairhouse Court complex have their own front door but are linked to the Scheme Coordinator and/ or Careline by an Alarm System ensuring privacy, security and peace of mind



Interior of one of the flats

- ♦ **Supported People Charge** is a separate amount payable in addition to your rent to cover the costs of the Sheltered Housing Scheme Coordinators and your Support Plan. It will be approximately £11 a week. If you are receiving Housing Benefit or if you were a council tenant before April 2003 this charge will be paid for you
- ♦ **Service Charges** cover the cost of heating, lighting, cleaning and maintaining the communal areas and are also payable in addition to your rent. The cost will be approximately £5 a week and if you are receiving Housing Benefit some of these charges may be paid for you