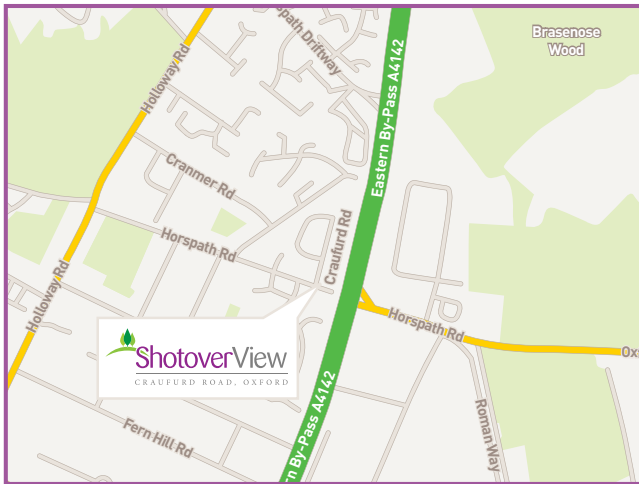


## Local information

With its mix of ancient and modern, there is plenty for both the tourist and resident to do. Whether its visiting one of the many historic buildings, colleges or museums, going out for a drink or a meal, taking in a show or shopping till you drop, Oxford has it all.

**Location** - Postcode: OX4 2SQ



Shotover View is located in a residential setting in Craufurd Road, Oxford and provides fabulous on-site communal facilities for the residents and the local community. People can enjoy a meal in the restaurant, be pampered in the hair salon or relax in the gardens. The scheme has a convenience store nearby and a bus stop directly outside.

For further information about Shotover View please contact **Connells** on:

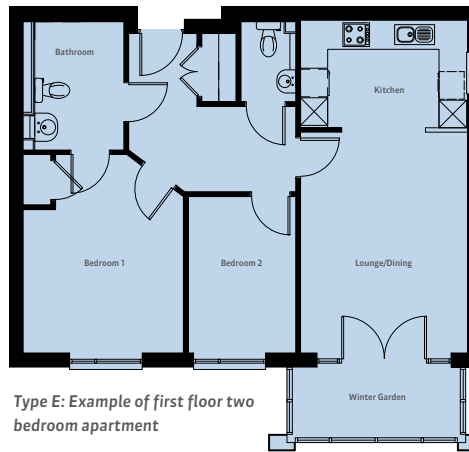
# 01865 763501

Email: [headington@connells.co.uk](mailto:headington@connells.co.uk)

## Floor plan examples



Type C, Plot 4: Show apartment - ground floor two bedroom apartment



Type E: Example of first floor two bedroom apartment

## bpha

**bpha** is a registered charity, one of the UK's leading providers of high quality residential and Extra Care housing schemes for older people. It manages over 17,000 properties and is registered with the Homes and Communities Agency.



18 two bedroom Extra Care apartments for sale under Shared Ownership.



bpha, Pilgrims House, Horne Lane, Bedford, MK40 1NY. Telephone: 0845 456 6757



# comfort support quality secure freedom



## Shotover View, Craufurd Road, Oxford

This new and exciting development is available to the over 55s\* who require housing along with care and support. There are 18 spacious two bedroom Extra Care apartments for sale under shared ownership and 37 one bedroom apartments to rent.

This attractive well-designed scheme provides:

- **Comfort** - A home designed to help you maintain your independence
- **Security** - 24/7 Emergency support on your doorstep
- **Community** - You and your guests can enjoy such facilities as a restaurant, hair salon, garden room and lounge
- **Peace of mind** - Care and support is available when you need it
- **Quality** - Qualified and highly trained staff from The Orders of St John Care Trust provide the care and support you need.

## What is Extra Care?

You may be thinking of moving home because of life changes or health problems. Extra Care housing offers a new way of supporting you to live independently for as long as possible.

It gives you the security and privacy of your own home, plus the benefits of a range of on-site facilities and the **reassurance** of 24 hour **emergency response**. Your **care** and **support** can be provided by The Orders of St John Care Trust (OSJCT) in a tailor-made care plan to suit your needs.

## The Orders of St John Care Trust

OSJCT is a not-for-profit charitable trust established in 1991. As one of the largest care providers in the UK, they have a wide range of experience in the provision of high quality care services for older people.

\*Under exceptional circumstances we may consider under-55s



Artist's impression is for illustrative purposes and is only representative of final furnishings and finish.

## What are my options?

### Shared ownership

You have the option to purchase a 75% stake in your new home which can be sold in the future for its value at that time<sup>†</sup>.

## What do I do next?



## Rent

There is an option to rent at Shotover View with 37 self-contained one bedroom apartments.

For further information contact:

**Belinda Brown, Trust Domiciliary Care Manager from OSJCT on 01295 239741.**

<sup>†</sup>Valued by a qualified surveyor to reflect current value.