

Fig Tree Court

TIVERTON

A quality development of **14 apartments** for the **over 55's** community



Are you aged over 55?

Are you looking for a low maintenance single-level accommodation set in safe, peaceful surroundings?

Do you value your independence?

Do you want to live in a friendly community, where friendships can be made and truly enjoyed?

Do you want a relaxed and affordable way of life where you can enjoy life exactly the way you want?

Perhaps you wish to spend your summers overlooking peaceful Devon countryside and wintertime somewhere abroad in the sun?

YES?...

Then look no further than **Fig Tree Court Retirement Apartments** in Tiverton.
Call us on **02380 450530** or visit **www.figtreecourt.co.uk**

Retirement living

High Specifications

Lifts to all floors

Underfloor heating with individual thermostats in each apartment

Double glazed windows and doors

Emergency call and Video Door Entry System

Low illumination (see in the dark) switches

Fully tiled walk-in wet room/shower room with heated towel rail

Fitted kitchen with dishwasher, fridge, freezer, hob, oven and microwave

Carpeted/floor coverings throughout

Terrestrial, Digital and Satellite television wiring to all apartments

10 year Premier Guarantee Certificate

Communal external lighting

Fire alarm, smoke detectors and emergency lighting

There is a car parking space for each apartment



Fig Tree Court is an excellent new development of 14 high quality retirement apartments with views along Tiverton's Grand Western Canal and surrounding countryside.

Each apartment has been built and fitted to a high standard with lift access to all floors. The apartments are arranged over three floors with well-lit seating areas and a communal landing room to spend time amongst your neighbours.

Each apartment comprises an entrance hall, lounge, fully fitted kitchen area, bedroom and shower/wet room with UPVC double-glazing and under floor heating.

All kitchens are fitted with a range of overhead and ground level cupboards, drawer units and work top surfaces and incorporate a stainless steel sink unit, built in microwave, dishwasher, electric oven and hob, fridge and freezer. Bathrooms are fully tiled and have a walk-in shower cubicle, WC and sink.

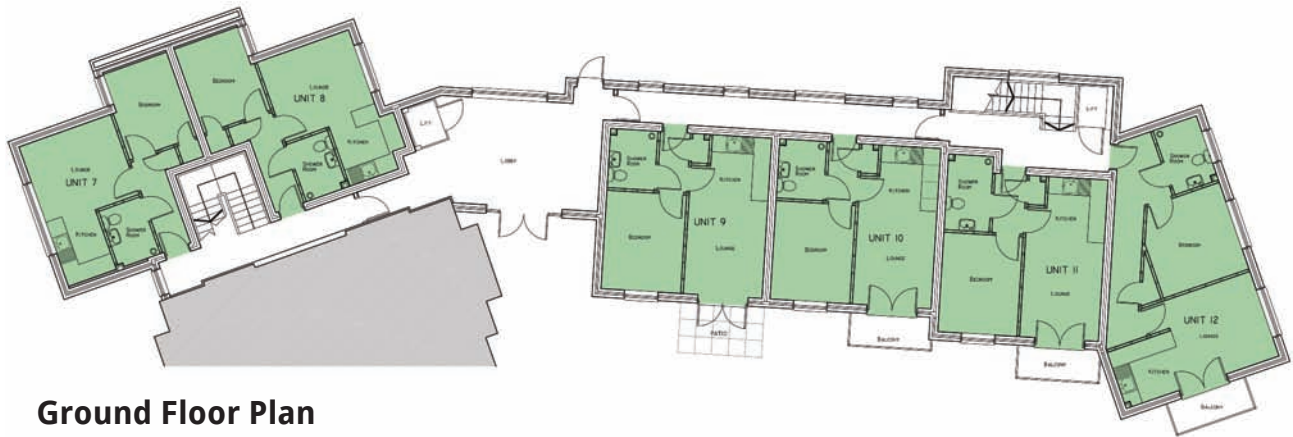
At Fig Tree Court, purchasers get the best of both worlds – independent living in a secure environment. The apartments provide residents with an independent lifestyle, secure in the knowledge that they will have access to support within their home if and when needed.

A monthly service charge is payable by residents to cover buildings insurance, under floor heating, hot water, the maintenance of the building, common areas, refuse collection, water and sewerage charges and gardening. In fact, the only additions to the service charge are electric (payable direct to the billing authority), council tax and optional BT and Sky TV.

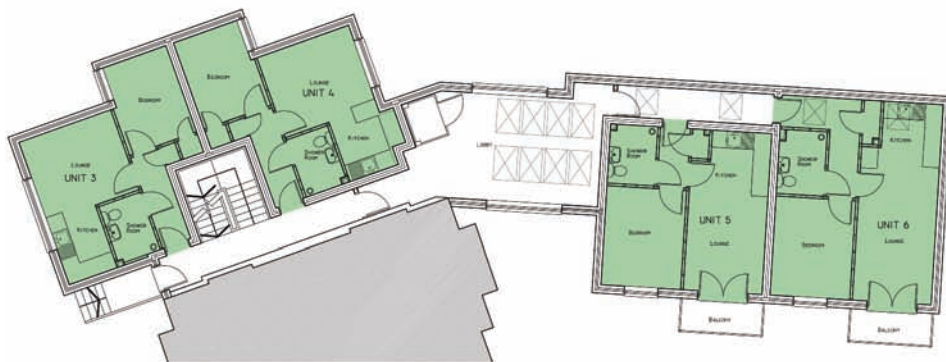


Figtree Court

Apartment floor plans



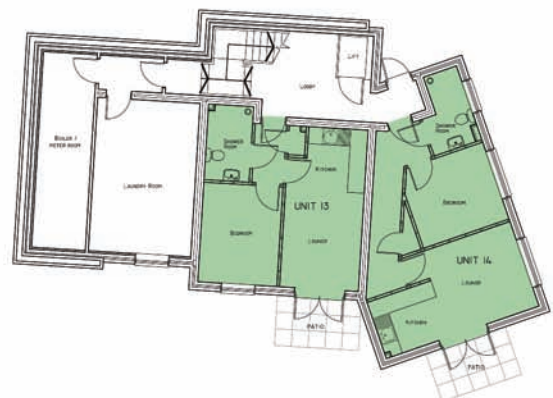
Ground Floor Plan



First Floor Plan



Second Floor Plan



Lower Ground Floor Plan

For further information...

Call us on **02380 450530** or visit **www.figtreecourt.co.uk**

Fig Tree Court



A location to live in

Find us

Fig Tree Court at The Larches,
Canal Hill,
Tiverton,
Devon EX16 4JD

Tel: 02380 450530
Fax: 02380 450531

Email: info@davidsoncph.co.uk

Directions

From Junction 27 of the M5, take the Barnstaple / Tiverton link road and travel approximately 5 miles. At the first exit to Tiverton, follow signs to the Grand Western Canal.

Fig Tree Court can be found approximately half a mile past the Canal Basin entrance on the left hand side, in the grounds of The Larches.

Fig Tree Court
TIVERTON

Please call **02380 450530** for further details or to arrange a viewing at **Fig Tree Court Retirement Apartments**.

Fig Tree Court at The Larches, Canal Hill, Tiverton, Devon EX16 4JD
Telephone: 02380 450530 www.figtreecourt.co.uk

Head office: 21 Compass Point, Ensign Way, Hamble, Southampton, Hampshire SO31 4RA