

# Anjulita Court, Bedford

Residential & Nursing Care



Support & respect in exceptional surroundings

# Anjulita Court



We understand that moving house is an important event, and at MHA we care about your new home as much as you do. At Anjulita Court, we have combined local knowledge with 65 years of experience in order to offer:

- A welcoming and stimulating environment for comfortable living
- Privacy and pleasure within a friendly community
- Specialist care and support around the clock
- The latest safety and security

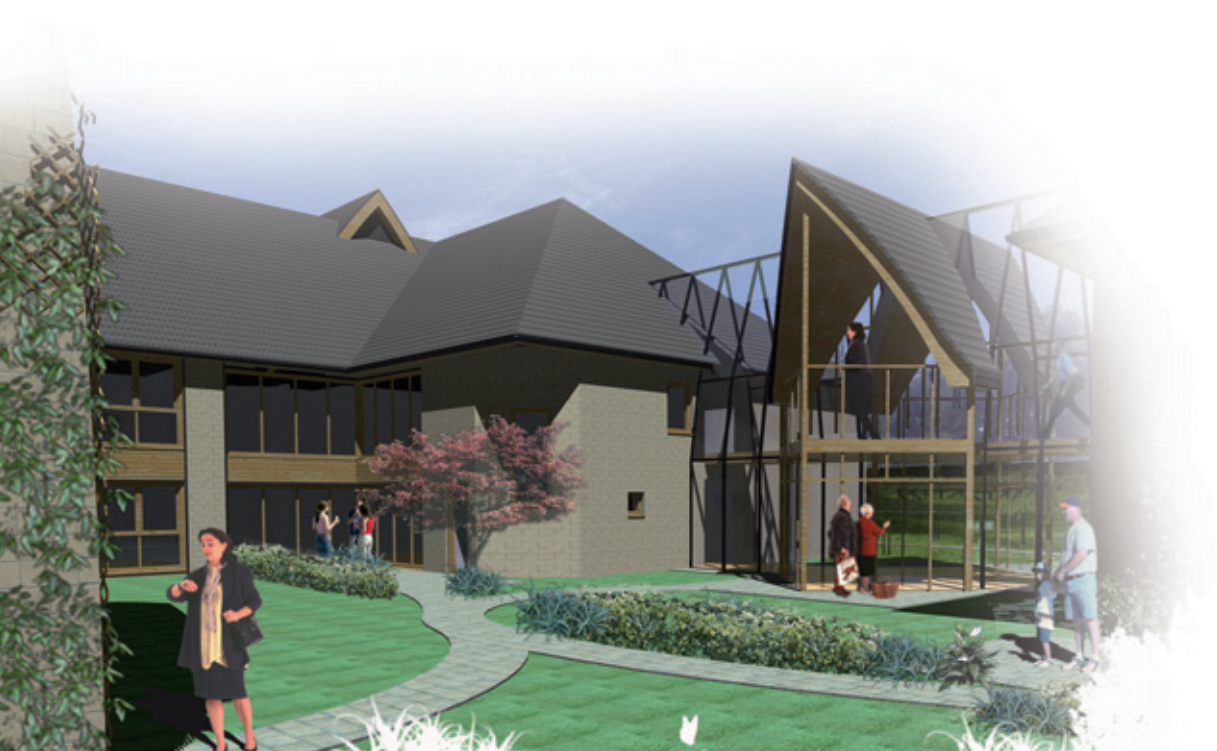
Enjoying later life to the full is all about having comfort, security and independence – the freedom to live your life without hassle or worry and with specialist care and support tailored to your individual needs. That's what Anjulita Court offers.

## MHA – where people care

Making the decision to move into care can be a challenging time. We aim to reassure you that it can be a move towards a more fulfilling later life. MHA's Care Homes offer an environment that provides peace of mind, security, support and stimulation. We know that each resident is a unique individual, and promise care that is based on respect and loving support.

## About Anjulita Court

Anjulita Court is a remarkable state-of-the-art Care Home with 62 en suite bedrooms over two floors, imaginatively designed to be comfortable and convenient for people in later life. Lift and wheelchair access throughout, and light open spaces, makes the building a pleasure to move around.



The development is a partnership between MHA and the Ibbett Trust, a local Bedfordshire trust with a passion for the highest standards of care and housing. Alongside the Home, the Trust intends to build additional Housing with Carebrand new apartments for sale, subject to planning permission, widening the choice of accommodation and support for older people locally. With day to day services managed by MHA, Anjulita Court provides residential and nursing support – including care for those living with dementia, in which MHA has developed recognised expertise. Additionally, it holds places for those needing rehabilitation and respite care.

Anjulita Court has been designed to be an asset to the local community – offering a warm welcome to visitors and creating a Home of the very highest standards for older people.

### Your accommodation

As a resident, you'll enjoy staying in your own private single room, designed to make your time at Anjulita Court relaxing and comfortable. Bright and airy, your room comes complete with high quality furnishings and is yours to personalise to your taste and make your own.

All rooms have an en suite bathroom with grab rails and level-access shower and toilet. Slip-resistant flooring here and in the kitchen will aid day-to-day peace of mind, while TV and telephone points will allow you to relax and enjoy calls within the privacy of your own room.





# Anjulita Court



## Care with respect

At Anjulita Court a dedicated care team is available to residents round the clock, providing flexible support tailored to individual needs. We want you to live as independently as you wish. To help you live life to the full we provide the care you need when you need it.

We seek to meet increased physical needs and mental frailty with individual care developed in consultation with you and your relatives. All our staff are fully trained in MHA's high quality care and play a vital part in creating a natural, homely atmosphere throughout the development, as they will in the proposed adjacent housing apartments. Above all, we ensure each resident is treated with the respect and dignity that we all deserve.

## Safety and peace of mind

MHA has developed a reputation for helping residents feel secure. As well as the presence of fully trained members of staff 24 hours a day, who can always be reached via our emergency call system, Anjulita Court utilises a range of new technology to make daily living easier and safer.

## Spirituality and well-being

Our concern at Anjulita is for your whole well-being. The building has been designed to complement individual privacy and independence with attractive settings for activity, therapy and relaxation. And as well as catering to physical needs, our staff team organises a complete range of activities and outings for residents to join in if desired.

In addition to caring staff and many volunteer supporters, Anjulita Court also has its own chaplain, available to anyone for personal support. The chaplain organises worship services for those who wish to attend and can arrange contact with other religious ministers if preferred.

## Communal areas

With a range of thoughtfully integrated shared facilities, Anjulita Court offers the opportunity for you to be part of a friendly community. Openness and light are features of the entire development – not only in its beautifully landscaped internal courtyard but in its entrance and walkways too.



Anjulita Court doesn't just meet required standards – it sets new ones. Spacious lounges with wide garden views are supplemented with Quiet Rooms and a striking meditation lounge. You will have use of a hairdressing salon, hydrotherapy pool and a treatments room that overlooks the courtyard; also a restaurant, IT/library room and fully-stocked shop. In addition, a “healthy living centre” and café are both available as drop-in facilities for older people and visitors from the surrounding community.

### Your care

We offer support tailored to personal needs, within a calm and relaxed environment. 24-hour nursing care is provided by professional, qualified nurses and trained care staff. We encourage you to share in the development of your own personal care plan and we will organise daily activities to suit your interests and abilities.

Your key worker will spend time with you to develop your individual care plan and inform other staff about how you wish to spend your time. This way we can ensure that we address all your personal needs.

**Dementia care** – MHA understands that each person is a unique individual. By getting to know the real person and their life history, we aim to understand the meaning behind behaviour and plan our care so as to reduce any frustration and improve well-being.



# Anjulita Court



## The care team

Our Home Manager is a fully qualified professional who leads a team including a deputy manager, team leaders, care assistants and support staff. All our staff are fully trained in MHA's high quality care and play a vital part in the creation of a natural, homely atmosphere within Anjulita Court.

## Health care

As a resident of Anjulita Court, you will have access to the full spectrum of local health and medical services such as your own GP, hospital appointments and community nursing services. A chiropodist, an optician, an occupational therapist and a dentist all visit residents regularly. All you need to do is inform a member of our care team if you would like to make an appointment with one of these health professionals.

## Cleaning and laundry

Our domestic assistants are responsible for the cleanliness and maintenance of the Home and will provide you with a thorough room cleaning service on a regular basis. Our laundry facilities are fitted out to commercial standards and your personal washing will be carefully cleaned and returned to you within 48 hours.

## Meals and refreshments

Our food is freshly prepared on site by highly trained and experienced staff. Daily menus are prepared in consultation with residents, and this enables us to provide you with a tasty and varied diet. All of the catering staff are further trained in meeting specialist dietary requirements as well as your own individual preferences. We serve meals three times per day in our dining rooms, plus morning coffee with biscuits and afternoon tea.

## Quality standards

MHA operates its own Quality Standards Programme that is continually audited and monitored to ensure the highest standards in all areas. MHA has been praised for excellent service by the Government's Audit Commission, the Centre for Policy on Ageing and the Social Care Association. If you would like further details of our standards and quality of services, please do not hesitate to ask.





---

## The location

Located at the end of a ¼ mile tree-lined boulevard ("The Ride"), Anjulita Court is situated on the edge of a country park, overlooking fields that are part of a protected greenbelt area. With shopping facilities also conveniently close at hand, and good transport links into Bedford town centre, Anjulita Court can be said to enjoy the "best of both worlds".

Bedford itself is just two miles away from the Home – a pleasant, cosmopolitan town situated on the River Great Ouse and within easy driving distance of London and Cambridge.

## How to find us

### From the M1.

Exit Junction 14, Newport Pagnell. Take the A421/A422 for Bedford. On entering Bedford go over the railway bridge. The road then splits into two lanes. Keep left, turning left at the traffic island (Shakespeare Road). Continue on to the next roundabout and proceed straight over, into Manton Lane, signed Brickhill.

*Keep going straight - through a set of traffic lights. and over a mini roundabout. At the second mini roundabout proceed left into Linnet Way (this becomes Waveney Avenue). At the next traffic island take first left, Avon Drive. Look for Tyne Crescent on your left hand side.*

*Turn left into Tyne Crescent. Pass Moriston Road on your right, continue on to another roundabout - turn left towards*

*Woodlands Park. This is a new housing estate. Follow Ashmead Road until you reach Bramley Way. Turn left into Bramley Way. Anjulita Court can now be seen.*

### From the A6, West.

Approach Bedford via the dual carriageway keeping in the left-hand lane. Continue straight over the first roundabout and turn left into Manton Lane at the second roundabout. Follow directions in italics.

### From the A1.

Exit the A1 at Bedford (Black Cat roundabout, A421). Follow the A421 to the first exit signed Bedford and Great Barford. Take this exit. At the traffic island at the end of the slip road turn right for Bedford. At the second island take the second exit, signed Bedford. Continue until you reach a third roundabout and turn right. Continue straight on (there are lots of signs for Woodlands Park).

At the fourth roundabout with B660, Kimbolton Road to the left and right, go straight over, you are now in Avon Drive. Take first road on your right, Tyne Crescent. Follow Tyne Crescent until you see Beaufort Way on your left just before a new roundabout. At the roundabout turn right towards Woodlands Park. It is well signposted. This is a new housing estate. Follow Ashmead Road all the way until you come to Bramley Way. Turn left into Bramley Way. Anjulita Court can now be seen.



### Interested in finding out more?

Please give us a call on **01234 273642**.

We will be delighted to talk to you and to discuss the pleasures and benefits of living at Anjulita Court.

Anjulita Court

Bramley Way

North Brickhill

Bedford

MK41 7GD

Email: [home.bdf@mha.org.uk](mailto:home.bdf@mha.org.uk)



housing and care for older people

### Head Office

Epworth House

Stuart Street

Derby

DE1 2EQ

Phone: 01332 296200

Fax: 01332 296925

Email: [enquiries@mha.org.uk](mailto:enquiries@mha.org.uk)

Website: [www.mha.org.uk](http://www.mha.org.uk)

Registered as a Charity - No. 1083995  
Company Limited by Guarantee - No. 4043124  
Methodist Homes for the Aged is part of MHA